

1. Product description

- MDDIAG M1 is a professional diagnostic scan tool for BMW Motor, with comprehensive functions, convenient and fast use, and easy to understand operation;
- Covered BMW Motor all series: C, E, F, G, K, R, S;
- Covered BMW Motor all diagnostic functions and service functions of all system;
- Common service functions: Oil reset, Immo key, Calibrate ESA, Calibrate SAF, Calibrate headlight, Switch off transport mode, etc.
- Support standard OBDII-16 and BMW 10 PIN connector;

2. Specifications

System	Android system above version 4.4
Processor	ARM 32 - bit Cortex processor
Communications	Bluetooth
Input Voltage	DC 8-16v
Operating Temperature	- 10 to 70 °C (14 - 158° F), Relative Humidity: <90%
Storage Temperature	- 30 to 120°C (-22 to 248° F), Relative Humidity: <90%
Dimension	150*94*40 mm
Unit Weight	GW:0.166kg
Protocols	UDS, ISO 9141-2, K/L lines, SAE-J1850VPW, SAE-J1850 PWM, CAN ISO 11898 ISO15765-4, High speed, Middle speed, low speed and Single wire CAN.

1. Software operating

- Hardware requirements: Phone with Bluetooth. Space disk can't less than 3G, and RAM can't less than 1G.
- Operating system: support Android above 4.4 .
- Network requirement: The software needs to be activated & downloaded online, so please make sure your internet is connected.

2. Software downloading

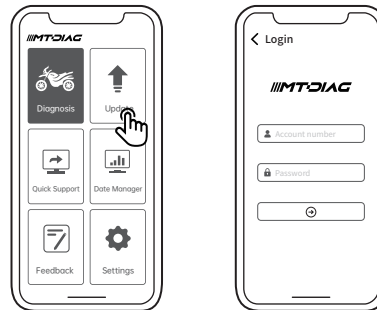
- Open the mobile browser, scan the QR code below and "visit";
- Download the app and install it.



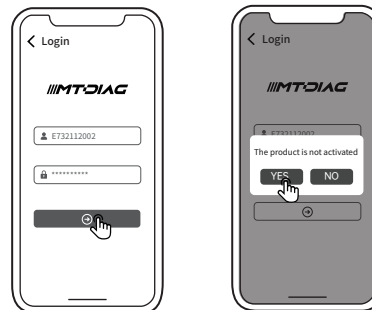
3. Software activation

- First, please keep the network connection, run MTDIAG app and enter the home page of the app.

- Click "Update" to enter the login page.



- Please enter the product serial number and password in the password envelope and click "login". If the product is not activated, click "yes".



- after the information has been committed, please login your email to activate the product.



- You will receive a activated email from the MTDIAG server.

Dear Customer,

Please click the following link to activate your device:
http://activation_link/Interface/sendemail.aspx?sn=5517041123&pswd=...

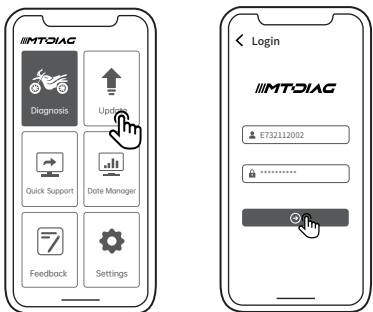
Thank you!

- Please click the link to get the confirmation from the manufacturer.

Activate success.

4. Software downloads

- After activation, please enter the MTDIAG app again to obtain the software upgrade. Please click "login" to enter the software download interface.



- You can download the software you need.

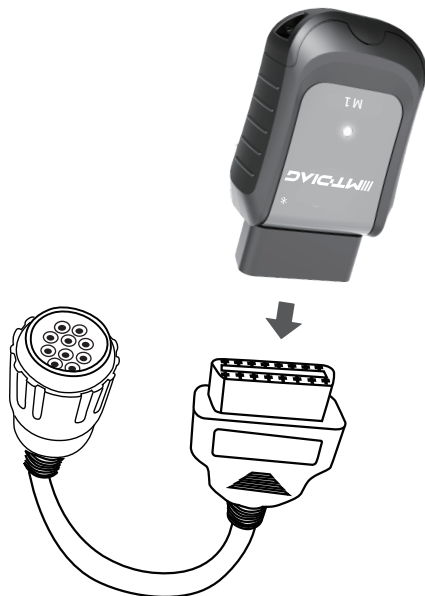


5

BMW motor diagnostic connector

- BMW motor has two diagnostic interfaces, one is the standard OBDII-16 interface and the other is BMW 10 PIN connector.

If it is a round head 10PIN interface, connect the VCI with the BMW 10 PIN connector and test it, as shown in the figure below:



6

After-sale service

- Hardware quality problems caused by non-human reasons within one year shall be repaired free of charge.
- Free software upgrade and lifelong maintenance.

MTDIAG - M1

QUICK GUIDE



7