

Knowledge of X-431 HD III Module

X-431 HD III module works as a vehicle communication interface device, which is used read the vehicle data and then send it to the diagnostic tool via Bluetooth /Wi-Fi communication or USB connection. The LED indicators enable you to easily identify the working status of the module.

Technical parameters:

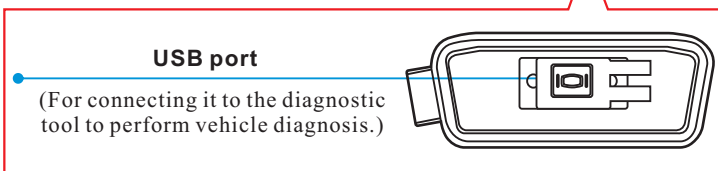
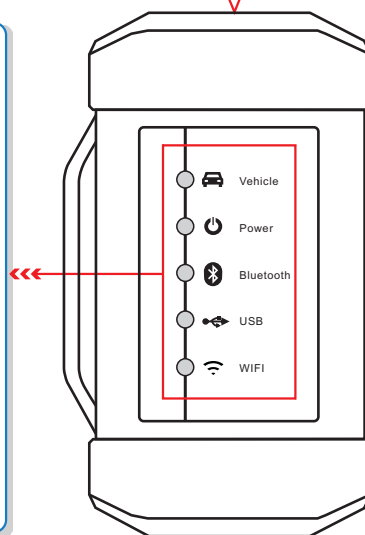
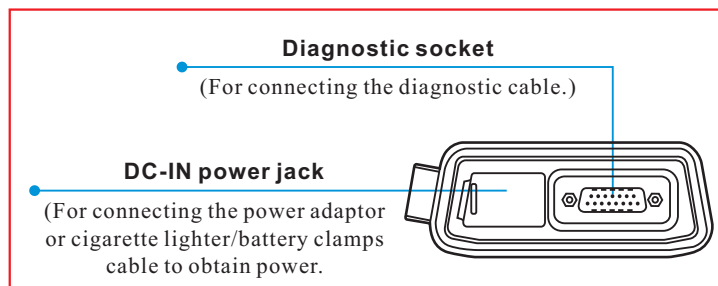
- Working voltage : 9-36V
- Power consumption : ≤ 3W
- Working temp. : -10℃-50℃
- Communication via :
 - 1) USB cable
 - 2) Bluetooth
 - 3) Wi-Fi

LED Indicators

Displays the working status of the module. It is defined as follows:

1. **Vehicle:** While the module is communicating with the vehicle, the indicator lights up and flashes. Otherwise, it will not illuminate.
2. **Power:** It illuminates solid red when the module is powered on.
3. **Bluetooth:** Blue indicates the module is working in Bluetooth mode.
4. **USB:** It lights up when the module is connected to the diagnostic tool via USB cable.
5. **Wi-Fi:** It lights up when the module works as a Wi-Fi hotspot or wireless adaptor.

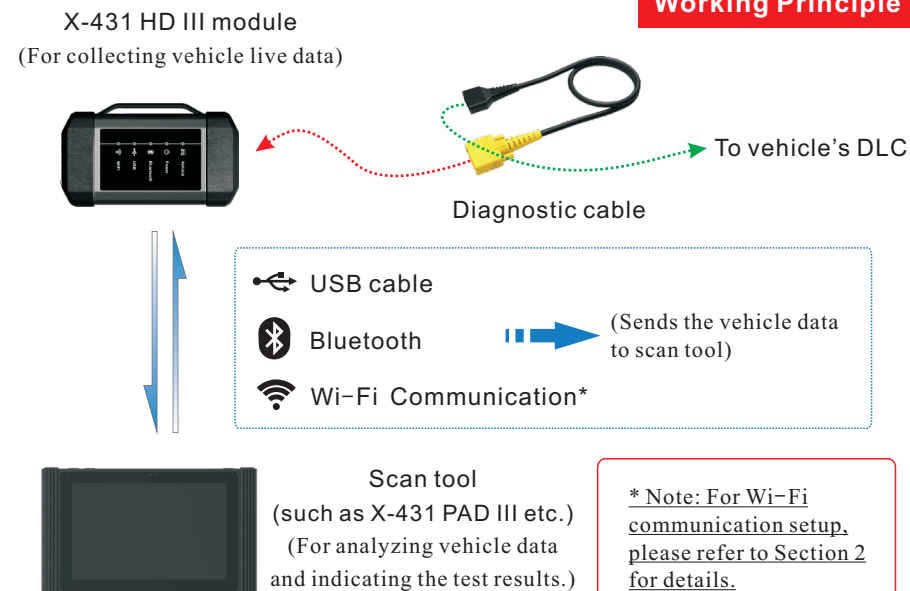
Note: Before plugging/unplugging the diagnostic cable or adaptor cable, please turn the ignition off first.



Accessory Checklist

HD III module	Diagnostic cable	USB cable
(For accessing vehicle live data)	(To connect the HD III module and diagnostic tool to perform vehicle diagnosis.)	(To connect the HD III module to the diagnostic tool with different type of USB port.)
Cigarette lighter	Battery clamps cable	Adaptor cable kit
(To supply power to the HD III module through connection to cigarette lighter receptacle.)	(To supply power to the HD III module through connection to vehicle's battery.)	(For different vehicle diagnostic socket, it may be necessary to use one of the adaptor cables included within the kit.)
Power adaptor	Password envelope	
(To supply power to the HD III module through AC outlet.)	(A piece of paper bearing S/N and Activation Code, which is needed for your registration.)	

Working Principle

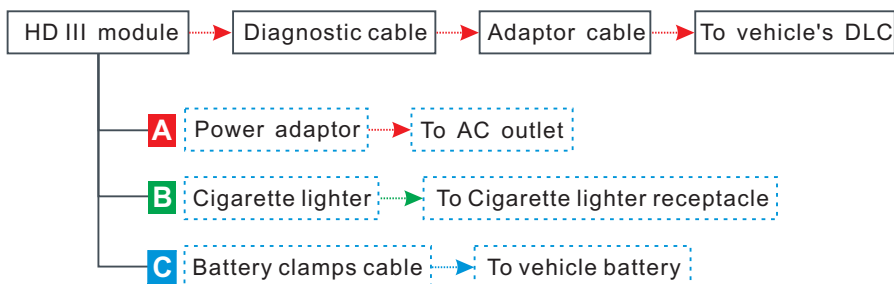


* Note: For Wi-Fi communication setup, please refer to Section 2 for details.

1 Vehicle Connection

1. Locate the vehicle's DLC: The DLC (Data Link Connector) is typically a connector where diagnostic code readers interface with the vehicle's on-board computer. The DLC location varies from vehicle to vehicle. It is generally located in driver's cab. If no DLC is found, please refer to Automobile Repair Manual.
2. Switch the ignition on.
3. For vehicles equipped with OBD II management system, plug one end of the diagnostic cable into the vehicle's DLC, and the other end into the diagnostic socket of the HD module, and then tighten the captive screws.

For vehicles not equipped with OBD II management system, it is necessary to use the corresponding adaptor cable, and then follow one of the methods below to make connection:



4. To perform vehicle diagnosis via USB cable, connect the B-shaped terminal of the USB cable to the HD III module and other end to the USB port of the scan tool.

2 Wi-Fi Communication Setup

To establish the Wi-Fi communication between the VCI module and scan tool, proceed the following steps:

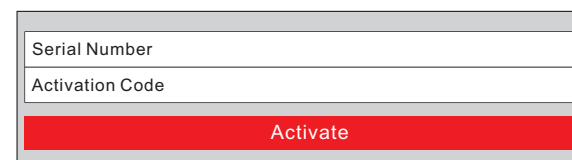
1. Follow the steps mentioned in Section 1 to make connection.
2. Power the scan tool on and launch the application.
3. After logging successfully, tap "Personal Center" -> "VCI Management" -> select "Use Wi-Fi communication", a pull-down option list appears:
 - Work as Wi-Fi hotspot: Once enabled, the VCI module and scan tool forms a LAN network to make communication. In this case, the scan tool can not surf the Internet.
 - Work as network adaptor: Once enabled, a Wi-Fi connection dialog box appears. Input the Wi-Fi network name and access password until it is properly connected. In this case, the scan tool can surf the Internet and communicate with the VCI module.

3 Activate X-431 HD III Module & Download Software

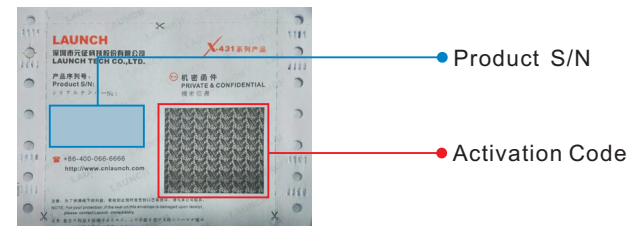
If you had a diagnostic tool of 12V passenger car configuration and intend to experience the diagnosis of commercial vehicles, follow the steps described below to activate the module:

Note: Please make sure that the diagnostic tool is properly connected to the Internet before proceeding this step.

1. Launch the application, and log in the system using the existing user account of Passenger Vehicle Configuration, and then tap "Personal Center" -> "Activate VCI".



2. Input the Product S/N and Activation Code, which can be obtained from the included Password Envelope, then tap "Activate" to activate the module.

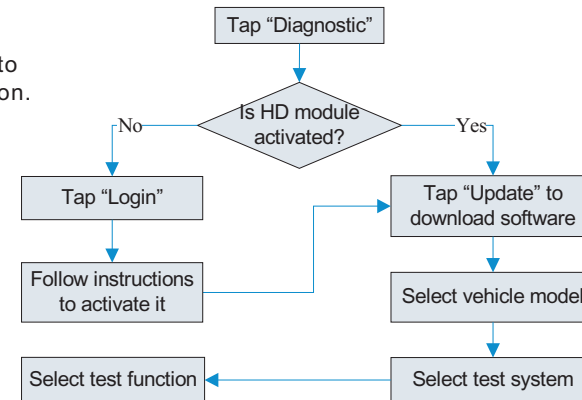


3. Tap "Update" to enter update center, tap "Update" to download and install it.

4 Start Diagnostics

Follow the sequence below to start a new diagnostic session.

Statement: LAUNCH owns the complete intellectual property rights for the software used by this product. For any reverse engineering or cracking actions against the software, LAUNCH will block the use of this product and reserve the right to pursue their legal liabilities.



.文档大小：原始文档为A4纸张（宽297mm x 高210mm），按照
1:1输出

材质要求：157G双铜

印刷要求：彩色印刷