

# U-CHARGER

## Magic Universal Charger

Charging up all old, present & future 3.6~3.7V or 7.2~7.4V Li-Ion battery packs, 1-2 NiMH/NiCd AA/AAA cells etc.  
Can Charge your mobile Phone MP3/MP4 and other USB device directly by USB Port. An excellent charger for camcorders, digital cameras, cell phones and PDA by a bonding method.

### User's guide

The charger is ready for use once the AC power adaptor or Car charger is connected to the main supply, then the red LED turns on when the DC connector is plugged in.

### NiMH/NiCd AA/AAA Battery

Withdraw the slippery board until it blocks.

-Place 1 or 2 pcs of AA or AAA rechargeable NiMH/NiCd batteries into the battery compartment, then press the circular button to release the slippery board. The green LED starts flickering, charging is in progress. If green LED does not start flashing, it indicates that the microprocessor has detected reverse polarity or bad cells.

a/ Reverse polarity

Readjust battery (ies) position and make correct contact for polarity (+ and -)

b/ Bad cells

Remove battery (ies) and replace them.

For your reference please insert batteries as follows:

-Sign “+” at side of the contact plates

-Sign “-” at side of the springs

**Safety instructions:** Do not attempt to recharge any non-rechargeable batteries. Do not mix cell types or capacities.

Do not expose charger to humidity to high temperatures. Always disconnect charger when not in use.

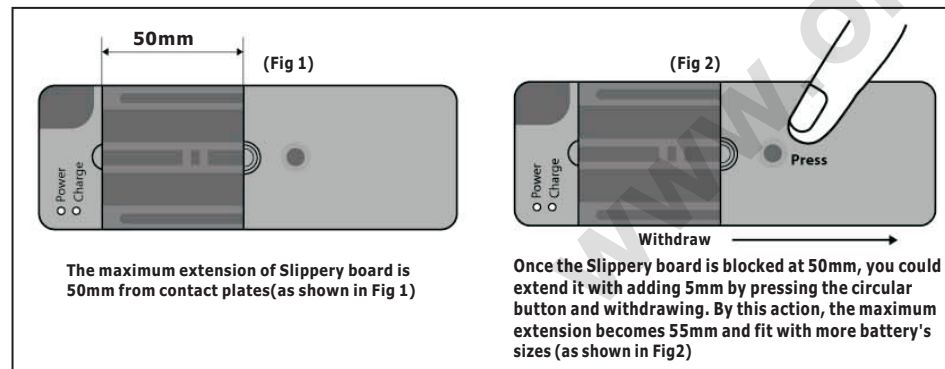
When use USB port, only the red light on and the green light won't shine, so please disconnect your charger when your USB device is fully charged, or your USB device may be destroyed if over time charged.

### Li-Ion battery

-Withdraw the slippery board until it blocks.

-Adjust the Li-Ion battery position, and make correct contact between terminals of charger and battery. When charging, just connect the battery to charger's terminals, the Universal Charger will identify automatically the polarities. The green LED starts flashing, charging is in progress.

Once Li-Ion battery is fully charged, both Red and Green LED light on and it can be taken out to use



### Technical datas:

Input: 12V DC 500mA

USB output: 5V 500mA

Charge Current: 1000mA Max

# U-CHARGER

## Magic Universal Charger

Charging up all old, present & future 3.6~3.7V or 7.2~7.4V Li-Ion battery packs, 1-2 NiMH/NiCd AA/AAA cells etc.  
Can Charge your mobile Phone MP3/MP4 and other USB device directly by USB Port. An excellent charger for camcorders, digital cameras, cell phones and PDA by a bonding method.

### User's guide

The charger is ready for use once the AC power adaptor or Car charger is connected to the main supply, then the red LED turns on when the DC connector is plugged in.

### NiMH/NiCd AA/AAA Battery

Withdraw the slippery board until it blocks.

-Place 1 or 2 pcs of AA or AAA rechargeable NiMH/NiCd batteries into the battery compartment, then press the circular button to release the slippery board. The green LED starts flickering, charging is in progress. If green LED does not start flashing, it indicates that the microprocessor has detected reverse polarity or bad cells.

a/ Reverse polarity

Readjust battery (ies) position and make correct contact for polarity (+ and -)

b/ Bad cells

Remove battery (ies) and replace them.

For your reference please insert batteries as follows:

-Sign “+” at side of the contact plates

-Sign “-” at side of the springs

**Safety instructions:** Do not attempt to recharge any non-rechargeable batteries. Do not mix cell types or capacities.

Do not expose charger to humidity to high temperatures. Always disconnect charger when not in use.

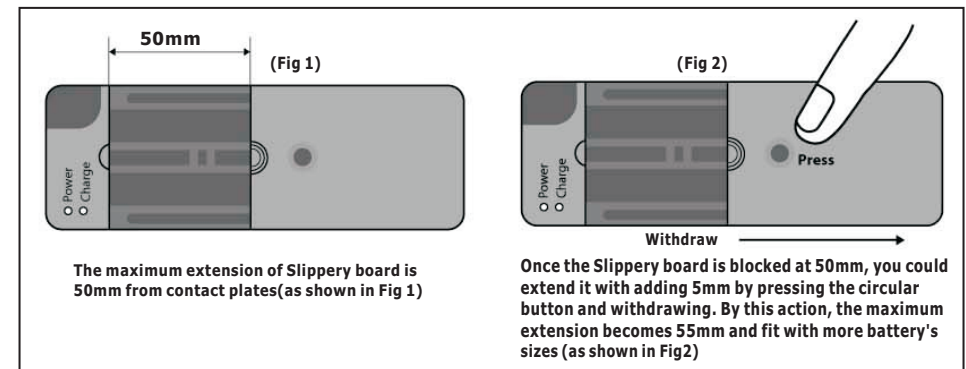
When use USB port, only the red light on and the green light won't shine, so please disconnect your charger when your USB device is fully charged, or your USB device may be destroyed if over time charged.

### Li-Ion battery

-Withdraw the slippery board until it blocks.

-Adjust the Li-Ion battery position, and make correct contact between terminals of charger and battery. When charging, just connect the battery to charger's terminals, the Universal Charger will identify automatically the polarities. The green LED starts flashing, charging is in progress.

Once Li-Ion battery is fully charged, both Red and Green LED light on and it can be taken out to use



### Technical datas:

Input: 12V DC 500mA

USB output: 5V 500mA

Charge Current: 1000mA Max