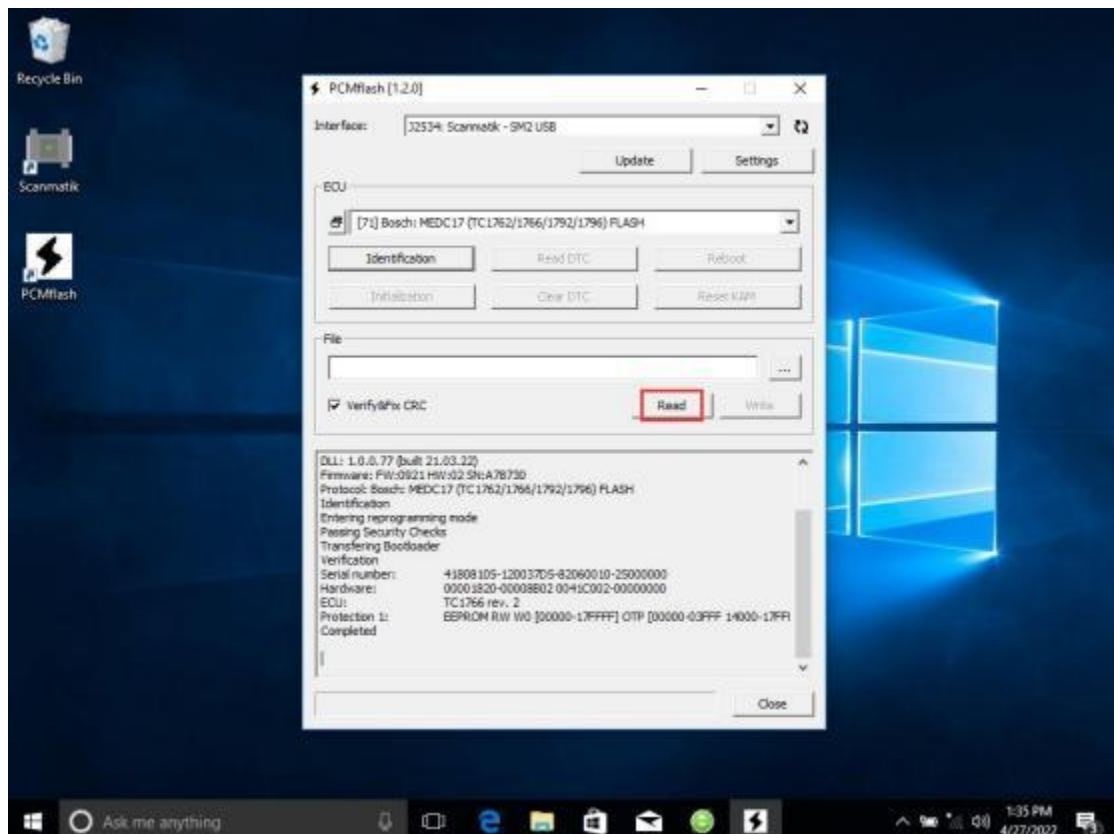
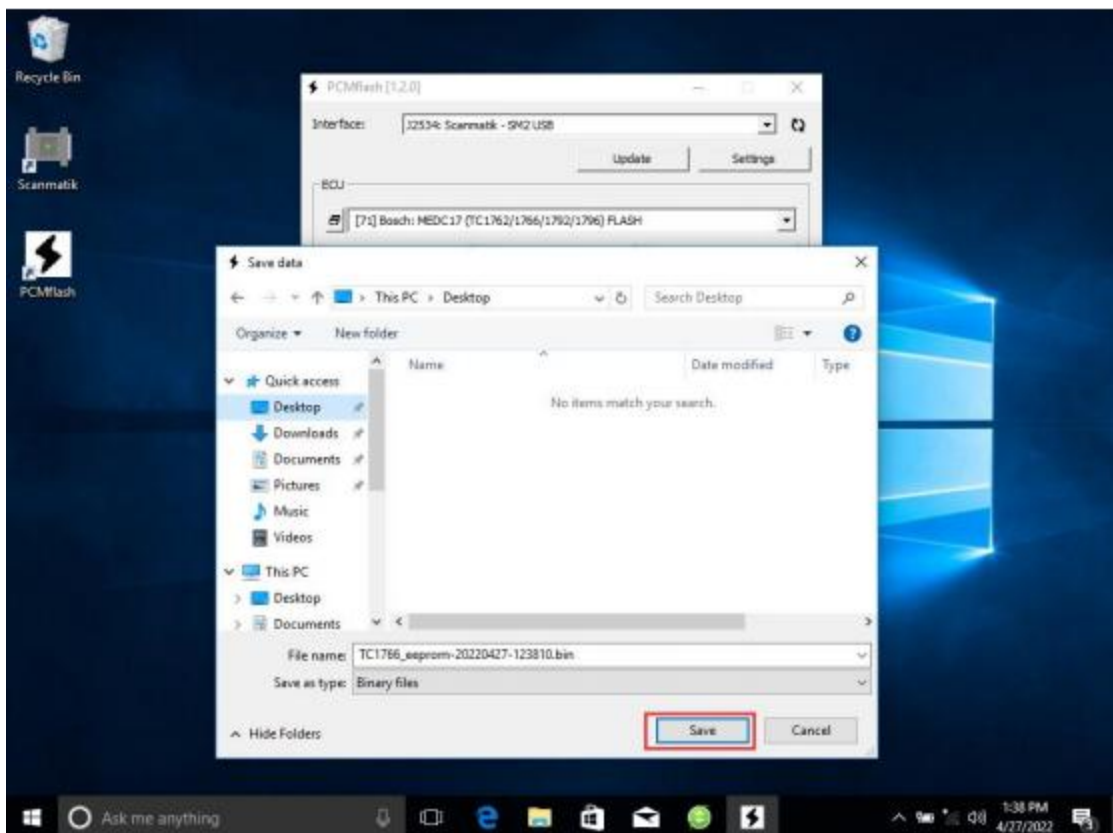
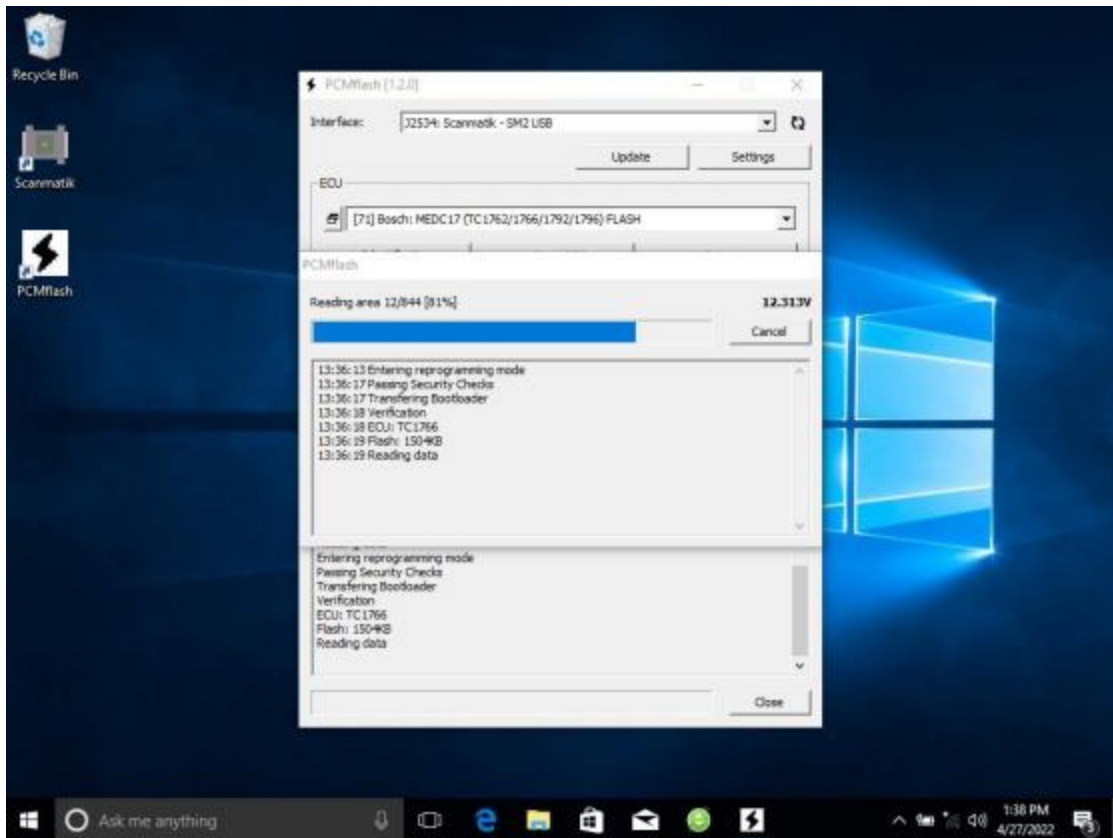
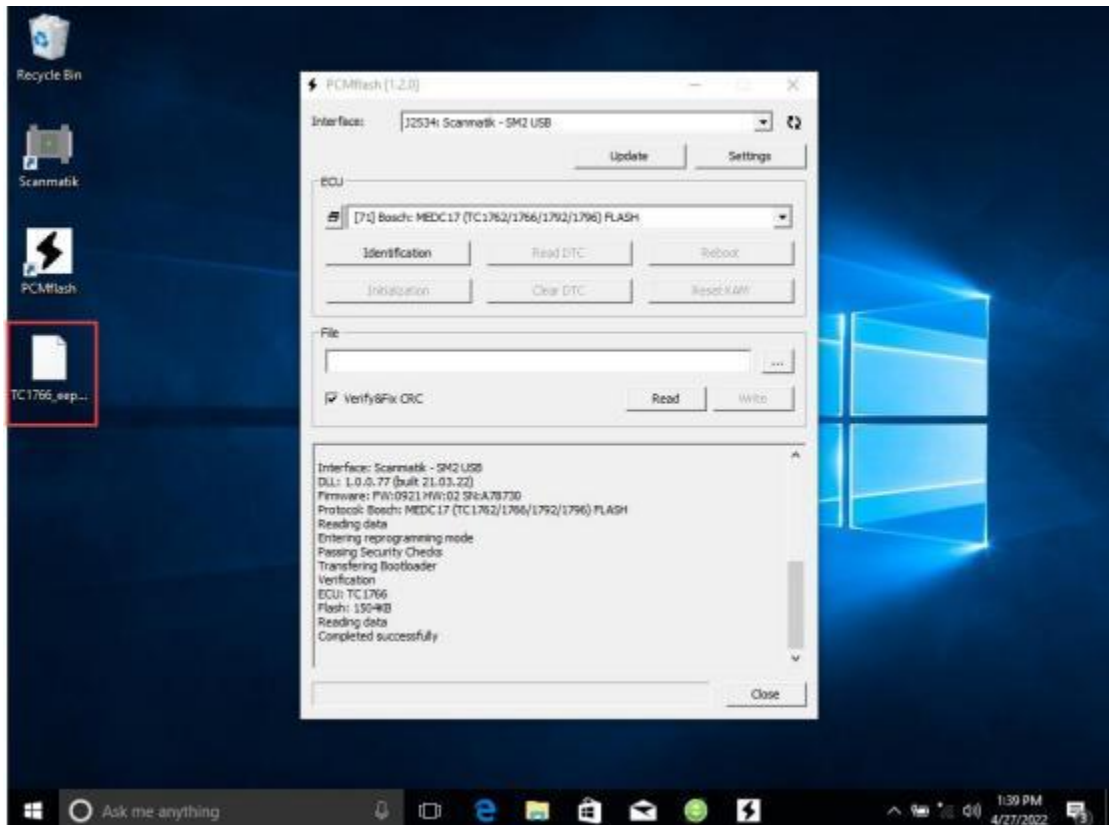


[Pcmtuner](#) ecu data processing service process (functions such as power adjustment, immo off, dpf/egr remove, dtc shielding, etc.)

1. The customer reads the flash data of the ecu via the SE157 Pcmtuner (if the customer only buys the SE157 -S dongle, they need to find another device to read the flash data, such as Tactrix Openport 2.0, Scanmatik 2 PRO, etc.)

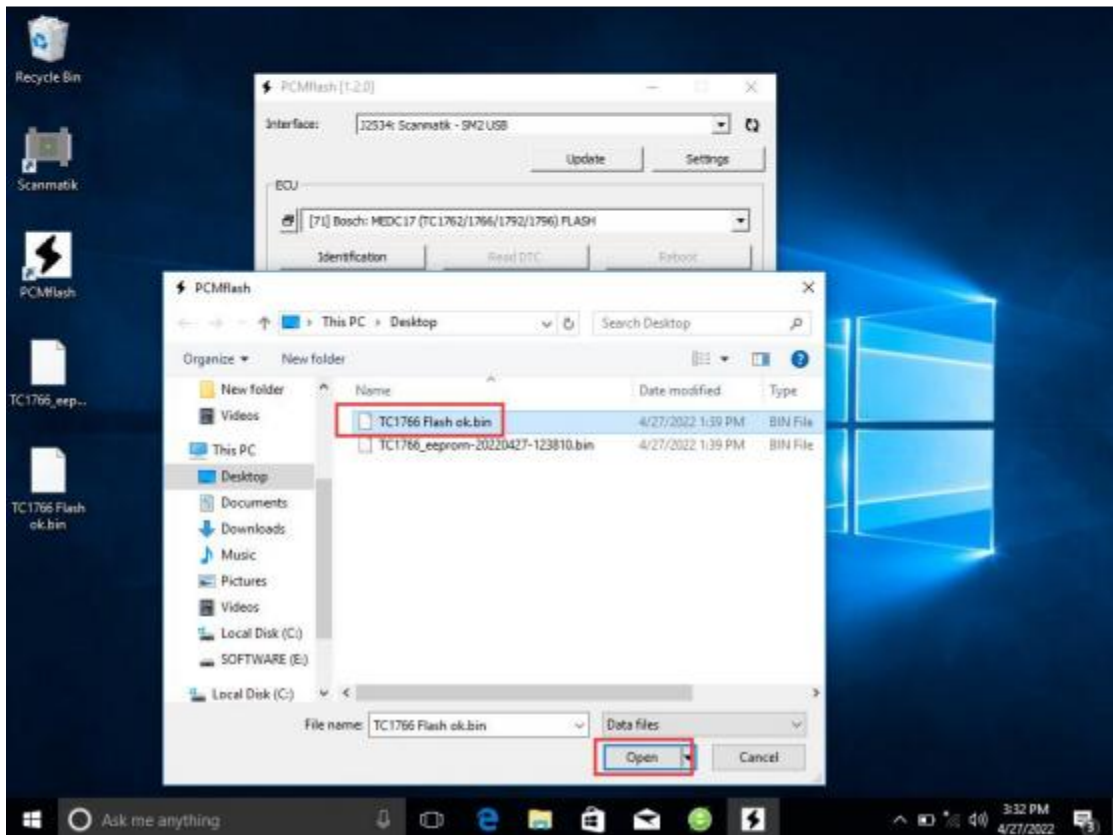
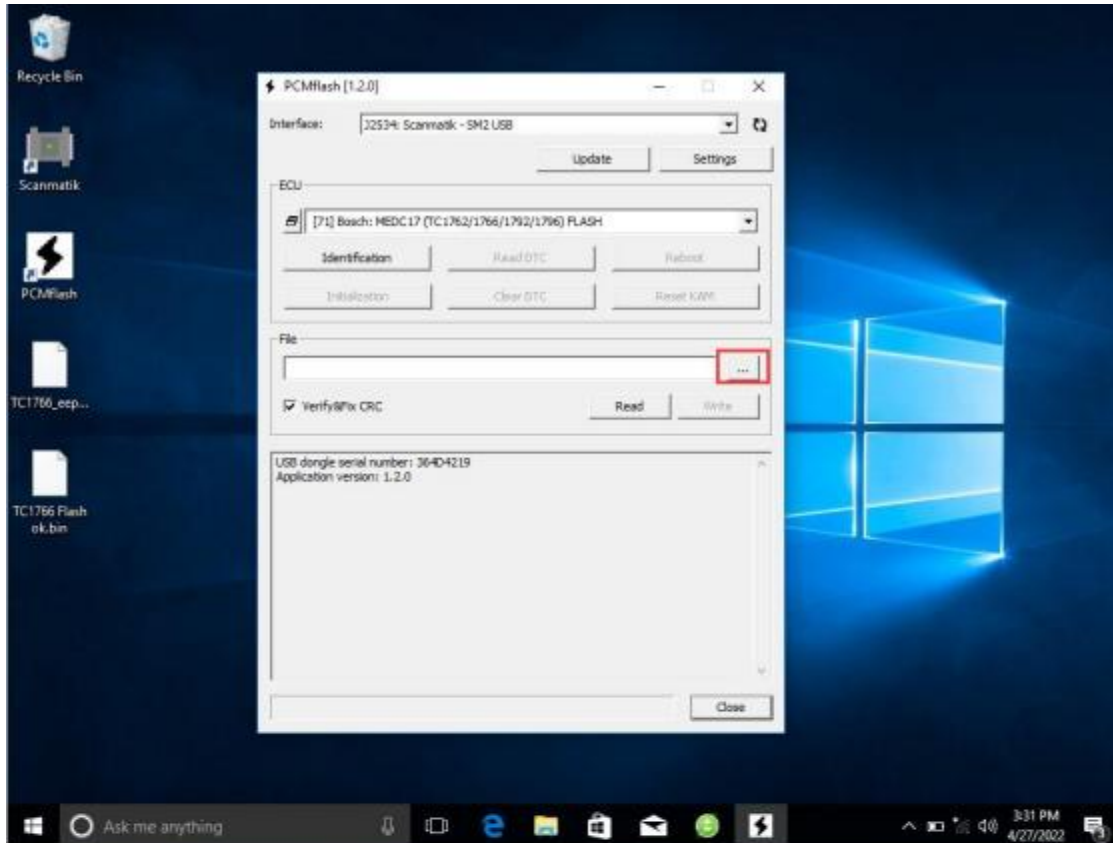


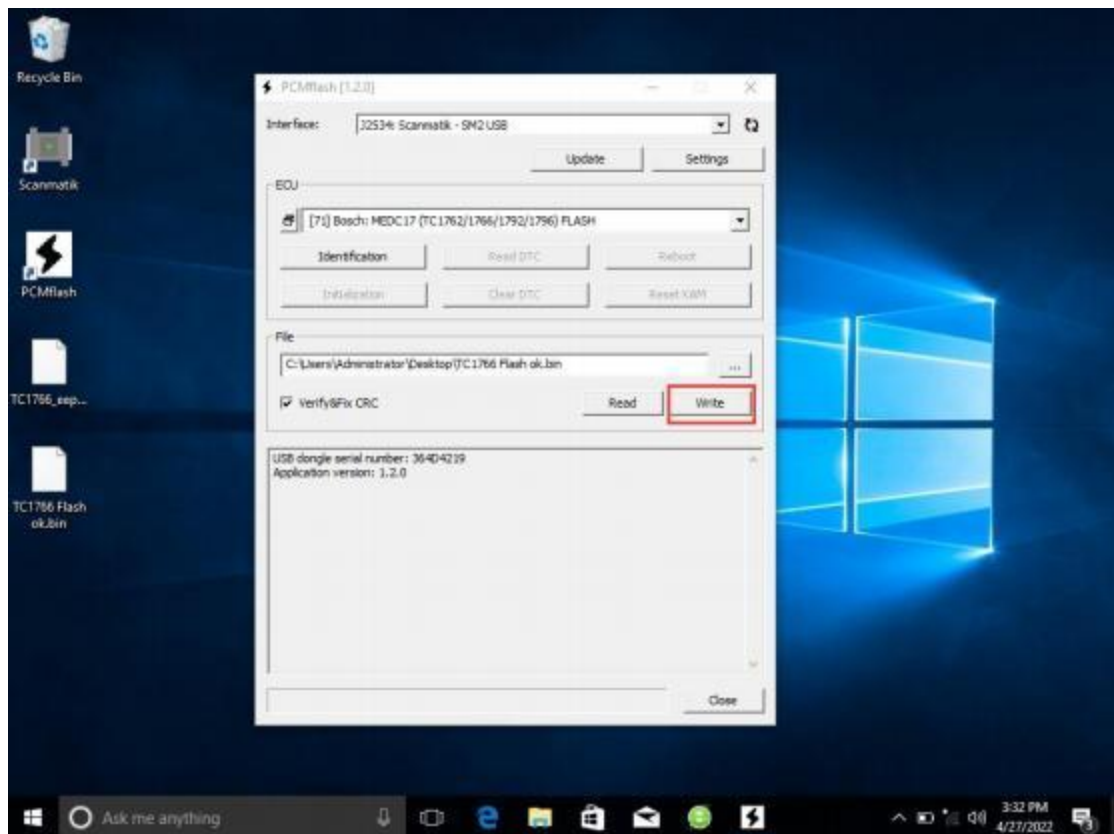




2. Read out the flash data of the ecu + car model + ECU model and send them to the purchaser, verify that the payment has been finished, and submit them to the factory for revision [customer explains his needs (functions such as power transfer, immo off, dpf/egr remove, dtc shielding, etc.)]

3. The ECU Flash data processed by the factory is sent back to the customer, and is written to the ECU via the SE157 Pcm tuner.





WWW.Eobdtool.co.uk