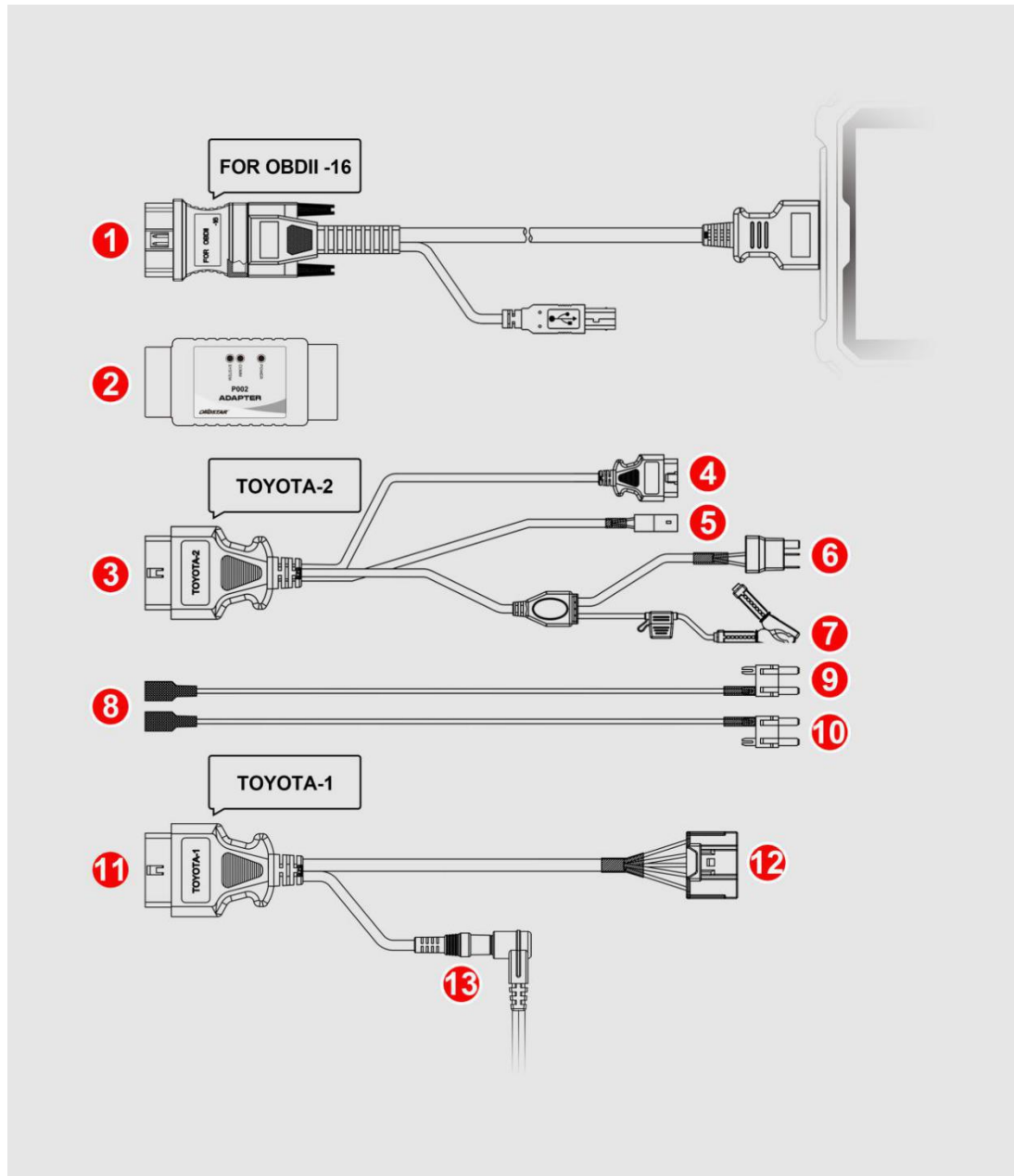


# TOYOTA 8A NON-SMART KEY ALL KEYS LOST PROGRAMMING CABLES CONNECTING METHODS

## ① Development Background

In normal situation, TOYOTA 8A H blade keys can't be added or erased in all keys lost except changing expensive new IMMO box. So TOYOTA all keys lost cables are developed, by which diagnostic device can read IMMO data and make master key to start the vehicle. The master key will help adding and erasing keys.

## ② Equipment Overview



1. Diag cable OBD connector(male)
2. P002 adapter
3. Connect P002 connector(female)
4. Connect vehicle OBD diag connector(male)
5. Lock plug
6. Relay plug
7. Battery clip(positive pole)
8. Jumper plug(relay)
9. Jumper plug(fuse blue)

10. Jumper plug(fuse brown)
11. Connect P002 connector TOYOTA-1 female (BENCH)
12. Connect ECU connector TOYOTA-1 female (BENCH)
13. TOYOTA-1 cable 12V power supply(BENCH)

### ③Support Car Models

Work on RAV4, HILUX, CROWN KLUGER, COROLLA, CAMRY, LEVIN, PRADO, REIZ IMMO transponder no need to disassemble all keys lost and IMMO box BENCH mode all keys lost.


Warm tips: not support partial US 8A H car models currently.

#### ④All Keys Lost Programming

##### Operation steps

IMMO ⇒ Asia ⇒ TOYOTA LEXUS ⇒ TOYOTA/LEXUS V32.45 ⇒ Manual Select System ⇒ BLADE ⇒ TYPE3(WHIT H 8A/8E)⇒ EUROPE⇒Europe



IMMO		TOYOTA/LEXUS		SN:951499990029	
TOYOTA/LEXUS V32.45 ✓					
TOYOTA/LEXUS V32.43					
 TOYOTA/LEXUS					
				Esc	Enter
TOYOTA/LEXUS		TOYOTA/LEXUS V32.45			
Manual Select Model					
Manual Select System ✓					
				Esc	Enter

TOYOTA/LEXUS Manual Select System

BLADE ✓

PROXIMITY

REMOTE

Esc Enter

TOYOTA/LEXUS BLADE

TYPE 1(67/68)

TYPE 2(WITH G 72)

TYPE 3(WITH H 8A/8E) ✓

TYPE 4(4C)

TYPE 5(AVANZA)

TYPE 6(FRS)

Esc Enter

TOYOTA/LEXUS		TYPE 3(WITH H 8A/8E)	
USA			
MIDDLE EAST			
EUROPE ✓			
		Esc	Enter

**Function menu**

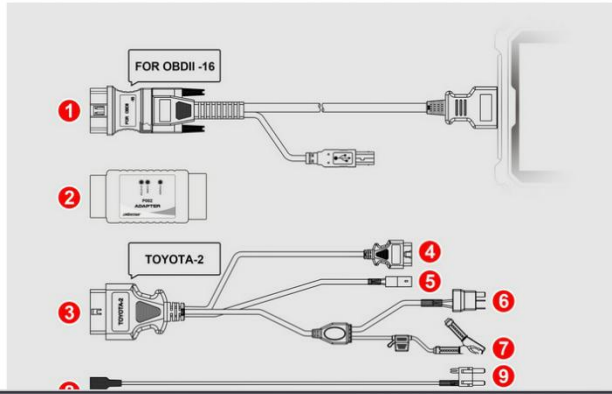
TOYOTA/LEXUS		EUROPE	
Read Immo Data ✓			
Make Start Key			
Program Key			
Erase Key			
Replace Immobiliser ECU			
Replace Engine ECU			
Instructions		Esc	Enter

**Button—Instructions**

TOYOTA/LEXUS Instructions

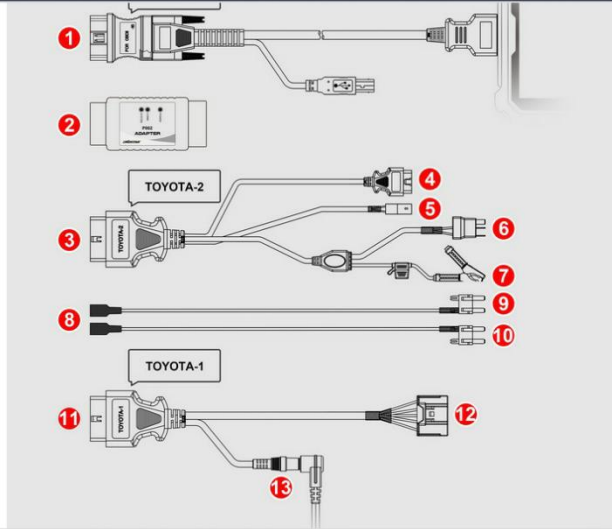
**Instructions**

**I.ALK Read Immo Data function equipment list**



Esc

TOYOTA/LEXUS Instructions



Esc



**TOYOTA/LEXUS Instructions**

- 1 : Diag cable OBD connector(male)
- 2 : P002 adapter
- 3 : Connect P002 connector(female)
- 4 : Connect vehicle OBD Diag connector(male)
- 5 : Ignition Lock Plug
- 6 : Relay Plug
- 7 : Battery clip(Positive pole)
- 8 : Relay Jumper Plug(Connect NO.6 by cable color)
- 9 : Jumper Plug(Fuse Blue)
- 10 : Jumper Plug(Fuse Brown)
- 11 : Connect P002 connector TOYOTA-1 female(BENCH)
- 12 : Connect ECU connector TOYOTA-1 female(BENCH)
- 13 : TOYOTA-1 cable 12V power supply(BENCH)

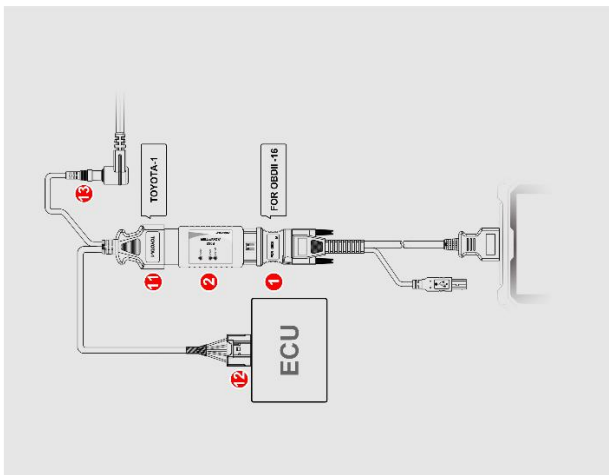
**II. ALK Read Immo Data function(BENCH mode wiring diagram)**



Esc

**TOYOTA/LEXUS Instructions**

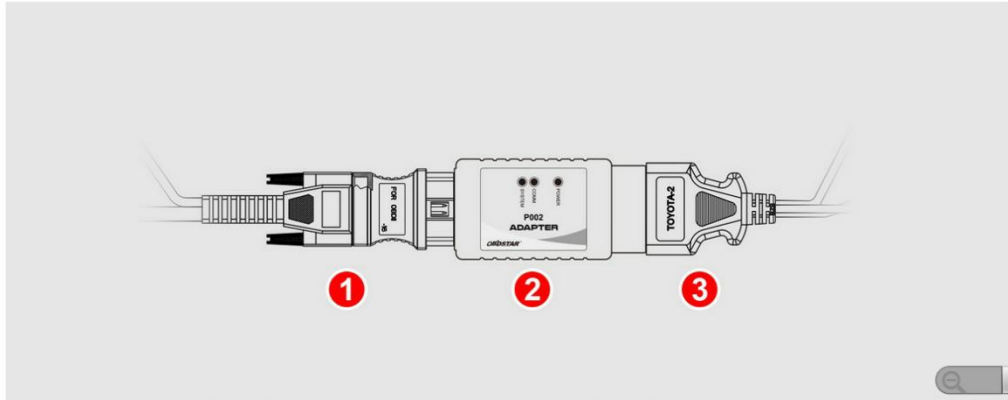
**II. ALK Read Immo Data function(BENCH mode wiring diagram)**



Esc

**TOYOTA/LEXUS** Instructions**III. ALK Read Immo Data function( No Need To Disassemble )**

Step 1: Connect 1, 2, and 3 together;



Esc

**TOYOTA/LEXUS** Instructions

Step 2: Plug 4 into vehicle's OBDII diag connector;



Step 3: Remove the lower shell of the vehicle ignition switch lock, pull out the plug of the ignition switch lock, plug of the ignition switch lock plug into NO.5;



Esc

**TOYOTA/LEXUS** Instructions

Step 3: Remove the lower shell of the vehicle ignition switch lock, pull out the plug of the ignition switch lock, plug of the ignition switch lock plug into NO.5;



Esc

**TOYOTA/LEXUS** Instructions

Step 4:

Method 1: Unplug the IG2 relay, Connect 6 to the IG2 relay socket;

Method 2: Unplug the vehicle fuse, Connect NO.6 and NO.8 by cable color, NO.9 and NO.10 are plugged into the corresponding fuse sockets(Choose according to the model);

e.g. LEVIN by method 1:

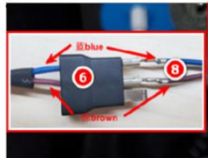


Esc

TOYOTA/LEXUS Instructions



e.g. REIZ by method 2:



锐志 REIZ

副驾地板上方  
Above the floor of CO driver



Esc

TOYOTA/LEXUS Instructions



车头方向  
Front direction

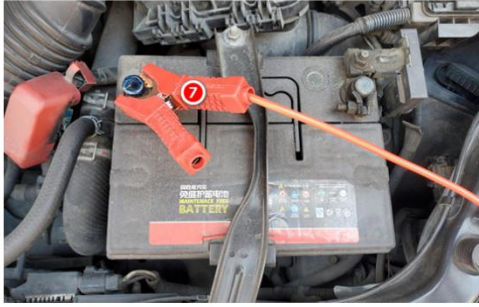
拔掉原车保险丝，按图示方向、颜色插入跳线。  
Pull out the fuse of the original car and insert the jumper according to the direction and color shown in the figure.



Esc

**TOYOTA/LEXUS** Instructions

Step 5: Remove the positive cable of the vehicle from the positive terminal of the battery ( **note: Don't short-circuit the positive cable with the vehicle body!!!** ), clamp the positive terminal with NO.7;



Step 6: Select Read Immo Data menu to read immo data and save it to the device(Select the saved data to generate the start key,Then proceed to key programming), It is recommended to use the **Key SIM** to generate the start key;

Step 7: Remove all the connections between the TOYOTA-2 cable and the vehicle, connect the positive cable of the

Esc

**TOYOTA/LEXUS** Instructions

Step 6: Select Read Immo Data menu to read immo data and save it to the device(Select the saved data to generate the start key,Then proceed to key programming), It is recommended to use the **Key SIM** to generate the start key;

Step 7: Remove all the connections between the TOYOTA-2 cable and the vehicle, connect the positive cable of the vehicle to the positive terminal of the battery, Select the saved Immo data to generate the start key,Then proceed to key programming;

Esc

### Execute the function—Read Immo Data

TOYOTA/LEXUS		EUROPE	
Read Immo Data		✓	
Make Start Key			
Program Key			
Erase Key			
Replace Immobiliser ECU			
Replace Engine ECU			
Instructions		Esc	Enter
TOYOTA/LEXUS		Information	
This function is available by connecting the server, please ensure the Internet connection is normal.			
		Esc	Enter

TOYOTA/LEXUS Information

1. This function requires the use of P002 adapter, TOYOTA-2 cable or TOYOTA-1 (BENCH mode) cable. For the usage method, please check the operation instructions of this interface or menu interface;
2. Whether the P002 adapter, TOYOTA-2 cable or TOYOTA-1 (BENCH mode) cable connected correctly?

Instructions

Esc

Enter

TOYOTA/LEXUS Read Immo Data



Reading data...

TOYOTA/LEXUS EUROPE

Please reenter the filename to save:

Toyota\_0518152101\_XXXX



### Execute the function—Make Start Key

TOYOTA/LEXUS EUROPE

Read Immo Data

Make Start Key ✓

Program Key

Erase Key

Replace Immobiliser ECU

Replace Engine ECU

Instructions

Esc

Enter



**TOYOTA/LEXUS** Make Start Key

1. This function can generate the Key SIM start key when all the keys are lost.
2. Using the Key SIM start key can replace the original car master key for key programming operations.
3. The Key SIM start key must be kept charged before it can be used, and it needs to be regenerated after power failure.

Esc

Enter

**TOYOTA/LEXUS** Select immobiliser data

NO.	File name ▲	time	size
001	Toyota_0517182318_XXXX.BIN	2021/05/17 18:23	90 B
002	Toyota_0518144704_XXXX.BIN	2021/05/18 14:47	90 B
003	Toyota_0518145525_XXXX.BIN	2021/05/18 14:55	90 B

Esc

Enter

TOYOTA/LEXUS Make Simulated Card

Please connect Key Sim simulator.

Enter

TOYOTA/LEXUS Make Simulated Card

Connecting, please wait...



TOYOTA/LEXUS Make Simulated Card

Loading Module, please wait...



TOYOTA/LEXUS Make Simulated Card



Generating the 8A simulated card, please wait...

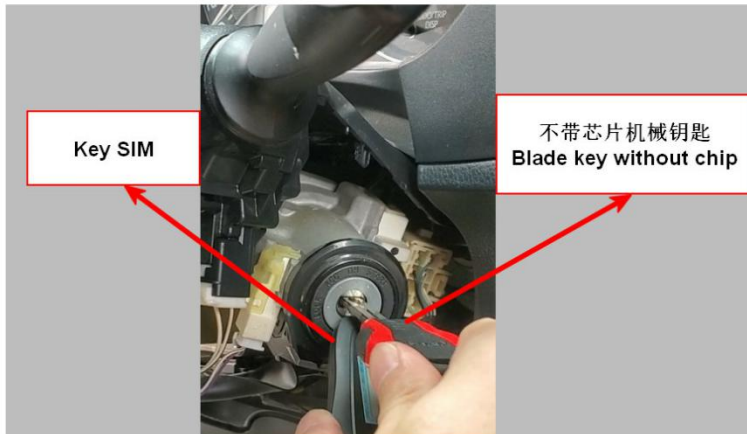
TOYOTA/LEXUS Information

1. The Key SIM start key is generated successfully.
2. Place the indicator light of the Key SIM start key close to the ignition switch and insert the blade key without chip into the ignition switch, turn the blade key to start the vehicle.
3. If the vehicle can be started normally, please use the Key SIM start key and the blade key without chip instead of the original vehicle master key for key addition and removal operations.

Instructions

Enter

TOYOTA/LEXUS Instructions



Esc

### Execute the function—Program Key

TOYOTA/LEXUS		EUROPE	
Read Immo Data			
Make Start Key			
Program Key ✓			
Erase Key			
Replace Immobiliser ECU			
Replace Engine ECU			
Instructions		Esc	Enter
TOYOTA/LEXUS		Information	
<p>1 master key is needed to erase or add other keys!</p> <p>How to identify master key and valet key? Insert key into ignition, if immobiliser light isn't bright, that is master key; if it is bright for 1 sec and then extinguished, that is valet key.</p>			
		Esc	Enter

TOYOTA/LEXUS Information

Insert programmed master key, switch ignition on, press ENTER to continue

Esc

Enter

TOYOTA/LEXUS Information

Insert the key to be programmed and keep the ignition off, then press [ENTER].

Enter

<b>TOYOTA/LEXUS</b> Information	
Wait for about 60 seconds until the immobiliser lights turn off, Done.	
<b>Enter</b>	

**Execute the function—Erase Key**

<b>TOYOTA/LEXUS</b> EUROPE	
Read Immo Data	
Make Start Key	
Program Key	
Erase Key ✓	
Replace Immobiliser ECU	
Replace Engine ECU	
Instructions	<b>Esc</b> <b>Enter</b>

TOYOTA/LEXUS Information

1 master key is needed to erase or add other keys!

How to identify master key and valet key?

Insert key into ignition, if immobiliser light isn't bright, that is master key; if it is bright for 1 sec and then extinguished, that is valet key.

Esc

Enter

TOYOTA/LEXUS Information

This method can erase all keys except the master key which is in the ignition.

Note: Each procedure must be completed within the specified time, otherwise, erasing will fail, press ENTER to continue

Esc

Enter



TOYOTA/LEXUS Information

Perform the following operation within 120 sec, press ENTER to continue

1. Remove the key from ignition

Enter

TOYOTA/LEXUS Information

Remove this master key from ignition within 10 sec, press ENTER to continue

Enter

TOYOTA/LEXUS Information

Erase success

Enter