



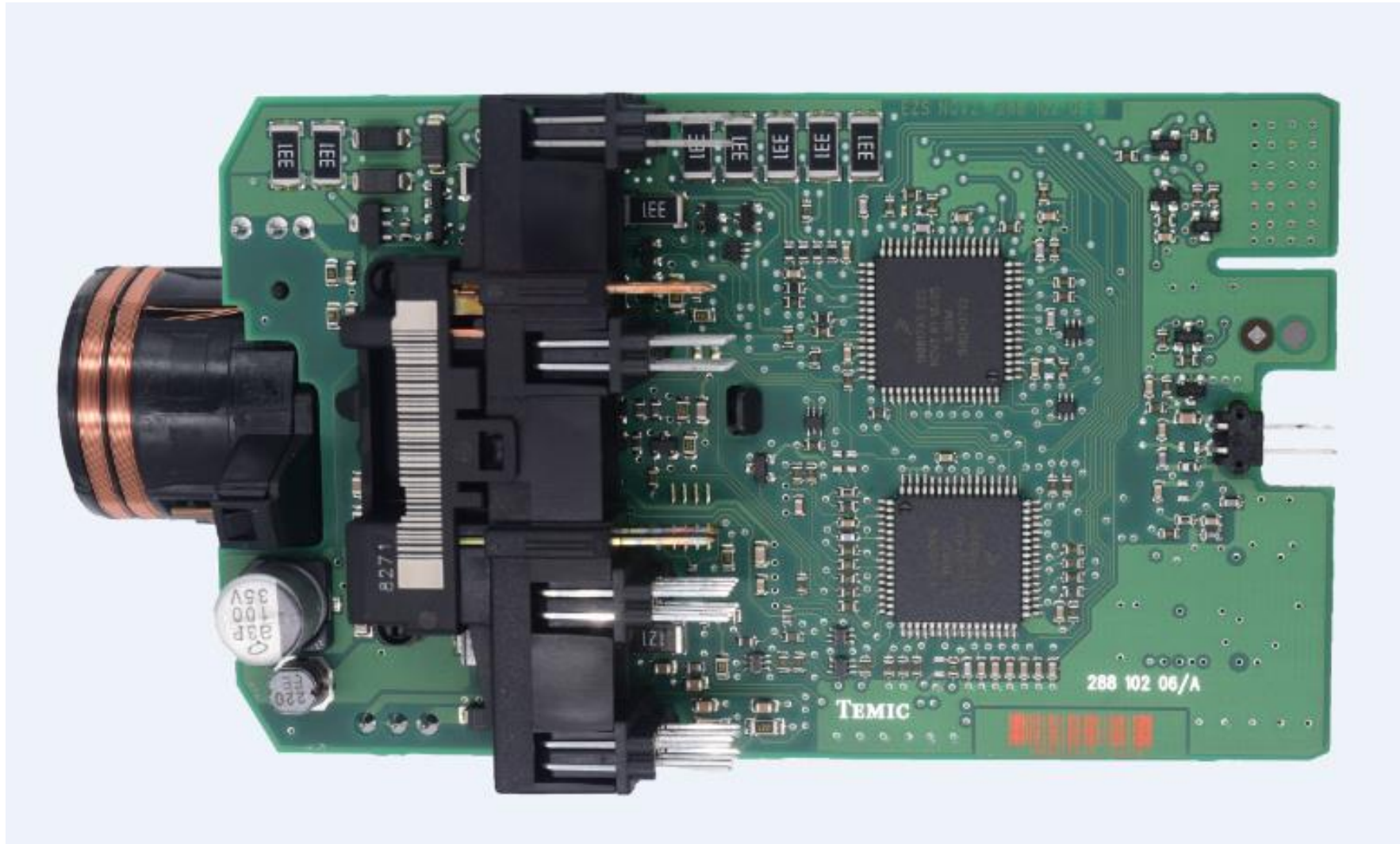
W639

Match the new key with CG-Pro

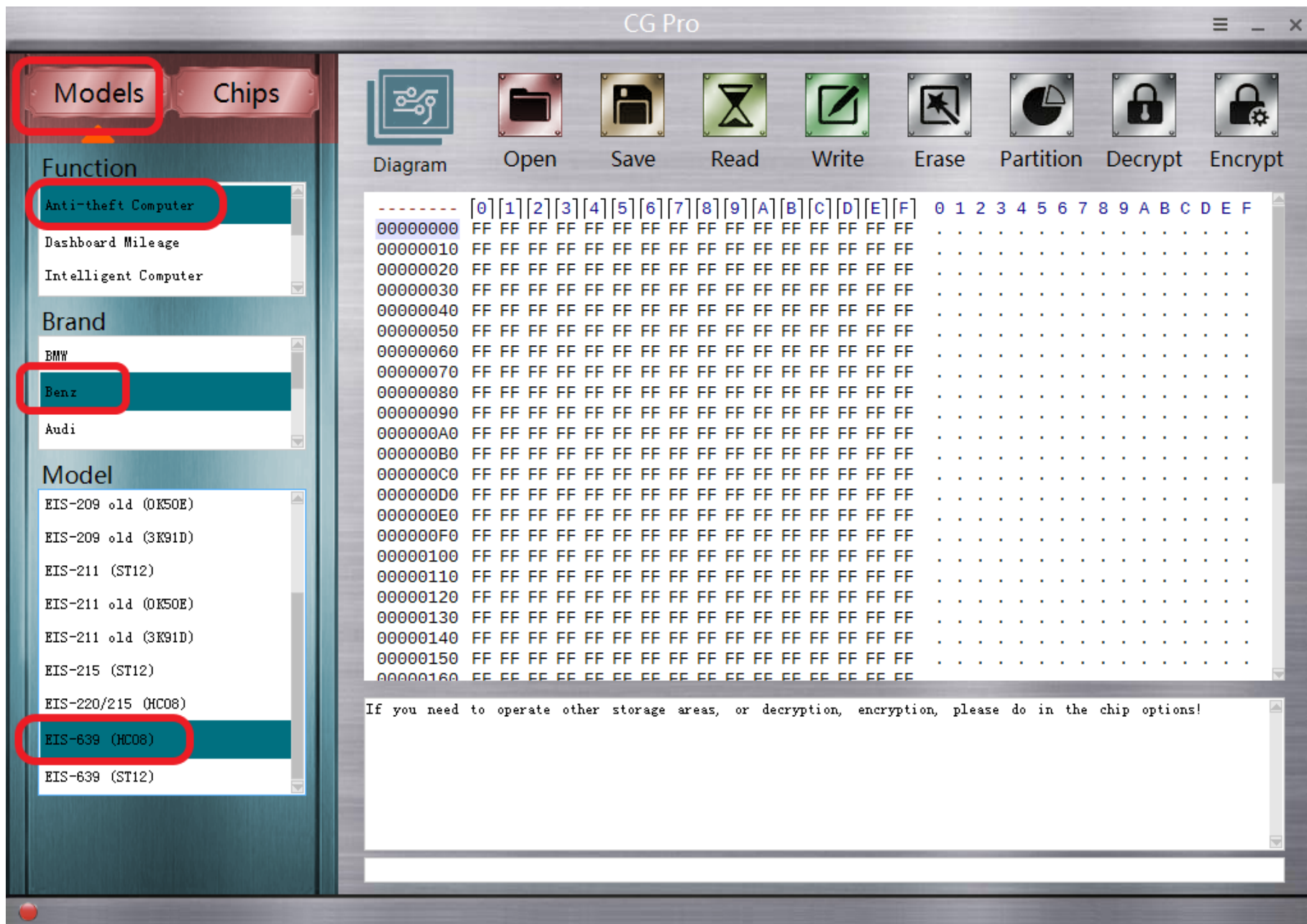
CG-MB



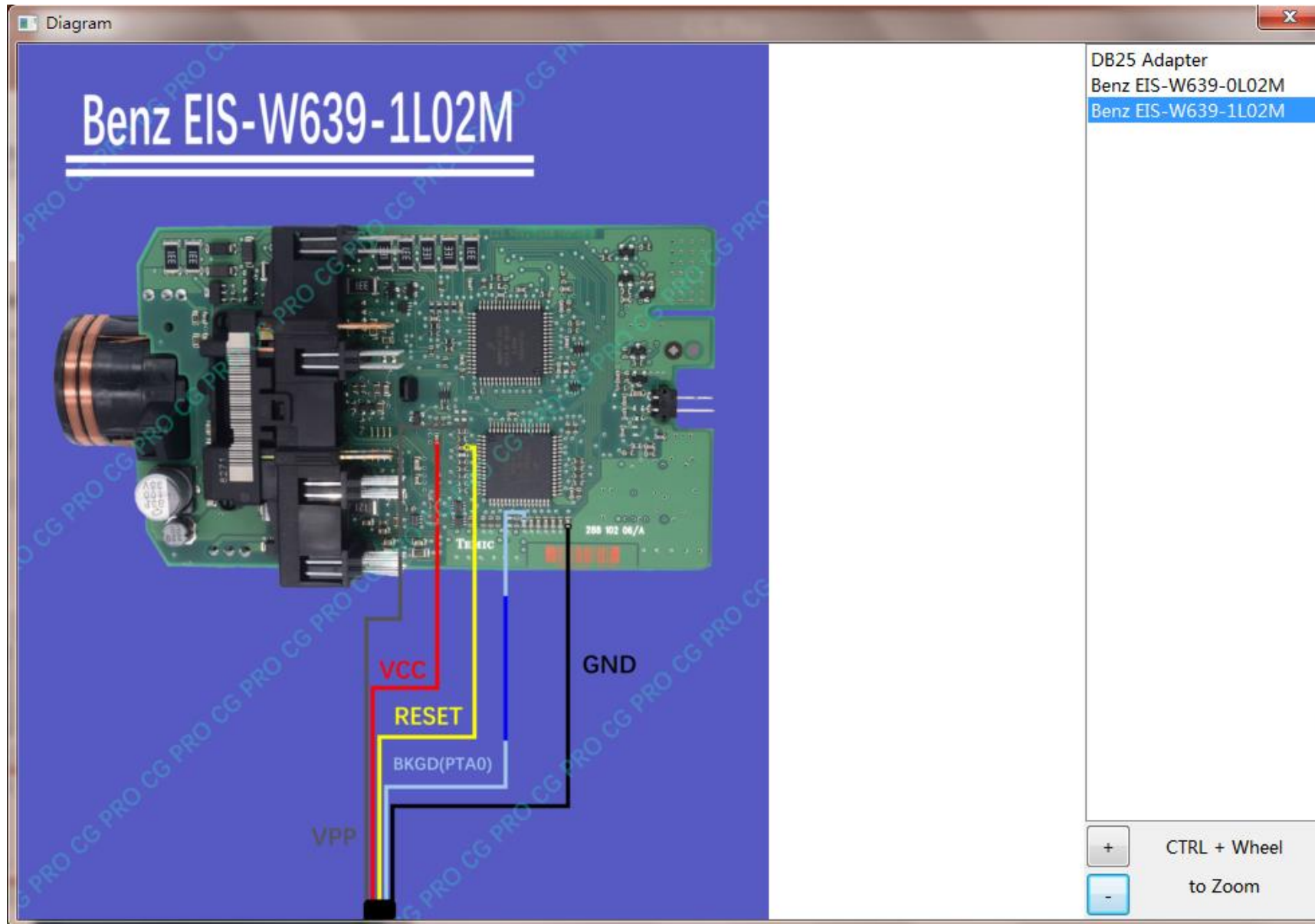
Take down lock, check the number



EIS related chip



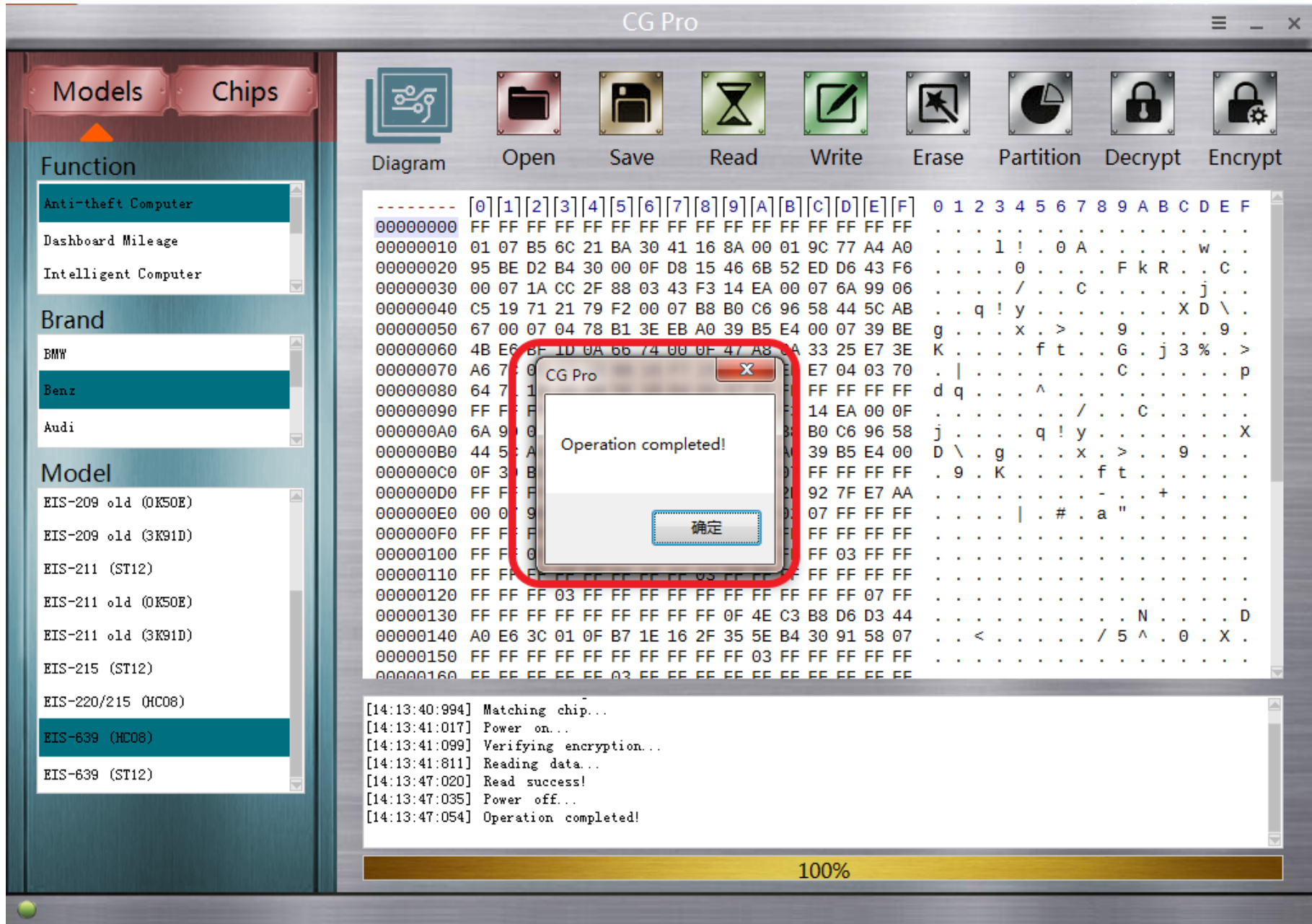
Open CG-Pro, enter into the related operation interface



View wiring diagram



Physical operation



Read data successfully and save it

CGDI-MB OAS 3 19 103

EIS

Read/Write Key

Compute Password

Generate EE

Auto Computer

ELV

Welcome to use!

EIS Basic Information

SSID VIN

EIS number Mileage The last key used

The penultimate used

EIS Key Basic Information

	Used	Disabled
Key 1	<input type="checkbox"/>	<input type="checkbox"/>
Key 2	<input type="checkbox"/>	<input type="checkbox"/>
Key 3	<input type="checkbox"/>	<input type="checkbox"/>
Key 4	<input type="checkbox"/>	<input type="checkbox"/>
Key 5	<input type="checkbox"/>	<input type="checkbox"/>
Key 6	<input type="checkbox"/>	<input type="checkbox"/>
Key 7	<input type="checkbox"/>	<input type="checkbox"/>
Key 8	<input type="checkbox"/>	<input type="checkbox"/>

Key password

Special key

Erase password

Enable Password

Initialized Personalized

TP cleared Activated

Dealer EIS FBS4

OpenCG-MB, Load the data just read by CG-Pro

CGDI-MB OAS 3 19 103

EIS

Read/Write Key

Compute Password

Generate EE

Auto Computer

ELV

EIS Basic Information

SSID: 28 AB E4 3D Write

EIS number: Allow Modify

VIN: The last key used

Mileage: The penultimate used

EIS Key Basic Information

Key	Hex	Used	Disabled
Key 1	07 B5 6C 21 BA 30 41 16	<input type="checkbox"/>	<input type="checkbox"/>
Key 2	9C 77 A4 A0 95 BE D2 B4	<input type="checkbox"/>	<input type="checkbox"/>
Key 3	D8 15 46 6B 52 ED D6 43	<input type="checkbox"/>	<input type="checkbox"/>
Key 4	1A CC 2F 88 03 43 F3 14	<input type="checkbox"/>	<input type="checkbox"/>
Key 5	6A 99 06 C5 19 71 21 79	<input type="checkbox"/>	<input type="checkbox"/>
Key 6	B8 B0 C6 96 58 44 5C AB	<input type="checkbox"/>	<input type="checkbox"/>
Key 7	04 78 B1 3E EB A0 39 B5	<input type="checkbox"/>	<input type="checkbox"/>
Key 8	39 BE 4B E6 BF 1D 0A 66	<input type="checkbox"/>	<input type="checkbox"/>

Key password: 44 F2 08 15 2B 21 6B 18 Copy Paste

Special key: 47 A8 6A 33 25 E7 3E A6

Erase password: Get

Enable Password: Get

Initialized Personalized

TP cleared Activated

Dealer EIS FBS4

Read EIS Data

Save EIS Data

Load EIS Data

Write EIS Data

Wipe the EIS

Clear TP Protection

Activate EIS

Disable Enable

Sync W204 ELV

Welcome to use!

Load EIS data successfully, show the password directly

CGDI-MB OAS 3 19 103

EIS

Read/Write Key

Compute Password

Generate EE

Auto Computer

ELV

EIS Basic Information

SSID: 28 AB E4 3D VIN: Allow Modify

EIS number: Mileage: The last key used: The penultimate used:

EIS Key Basic Information

Key	Hex	Copy	Paste
Key 1	07 B5 6C 21 BA 30	<input type="button" value="Copy"/>	<input type="button" value="Paste"/>
Key 2	9C 77 A4 A0 95 3E	<input type="button" value="Copy"/>	<input type="button" value="Paste"/>
Key 3	D8 15 46 6B 52 ED	<input type="button" value="Copy"/>	<input type="button" value="Paste"/>
Key 4	1A CC 2F 88 03 43	<input type="button" value="Copy"/>	<input type="button" value="Paste"/>
Key 5	6A 99 06 C5 19 71	<input type="button" value="Copy"/>	<input type="button" value="Paste"/>
Key 6	B8 B0 C6 96 58 44 5C AB	<input type="button" value="Copy"/>	<input type="button" value="Paste"/>
Key 7	04 78 B1 3E EB A0 39 B5	<input type="button" value="Copy"/>	<input type="button" value="Paste"/>
Key 8	39 BE 4B E6 BF 1D 0A 66	<input type="button" value="Copy"/>	<input type="button" value="Paste"/>

Initialized Personalized
 TP cleared Activated
 Dealer EIS FBS4

Benz Monster

Save file successfully!

确定

Save file successfully!

Save EIS data, please default the file name

CGDI-MB OAS 4 20 103

EIS

Read/Write Key

Compute Password

Generate EE

Auto Computer

ELV

Load the EIS File and Confirm the PASSWORD

SSID VIN

Key password

Select the Key File Format and Location to Generate

1. Select the key file format
2. Select generate key position
3. Click the [Generate Key File] button to generate

V041 V051

Key 1 Key 2 Key 3 Key 4

Key 5 Key 6 Key 7 Key 8 Select All

Operation Tip:
1. Click the 'Load EIS File' button, check the SSID and password integrity
2. Select the key location and key type, then click the 'Generate key file' button, waiting for the results generated

Load EIS File

Generate Key File

Welcome to use!

Go to “GenerateEE”, Load the EIS data just saved

CGDI-MB OAS 3 19 103

EIS

Read/Write Key

Compute Password

Generate EE

Auto Computer

ELV

Load the EIS File and confirm the PASSWORD

SSID	VIN
28 AB E4 3D	
Key password	
44 F2 08 15 2B 21 6B 18	

Select the Key File Format and Location to Generate

1. Select the key file format
2. Select generate key position
3. Click the [Generate Key File] button to generate

V041 V051

Key 1 Key 2 Key 3 Key 4

Key 5 Key 6 Key 7 Key 8 Select All

Loading EIS file...
Load EIS file successfully!

Load EIS File

Generate Key File

Load EIS file successfully!

Load successfully, please check whether all information is correct

CGDI-MB OAS 3 19 103

EIS

Read/Write Key

Compute Password

Generate EE

Auto Computer

ELV

Load the EIS File and Confirm the PASSWORD

SSID: 28 AB E4 3D VIN: [REDACTED]

Key password: 44 F2 08 15 2B 21 6B 18

Select the Key File Format and Location to Generate

1. Select the key file format
2. Select generate key position
3. Click the [Generate Key File] button to generate

V041 V051

Key 1 Key 2 Key 3 Key 4

Key 5 Key 6 Key 7 Key 8 Select All

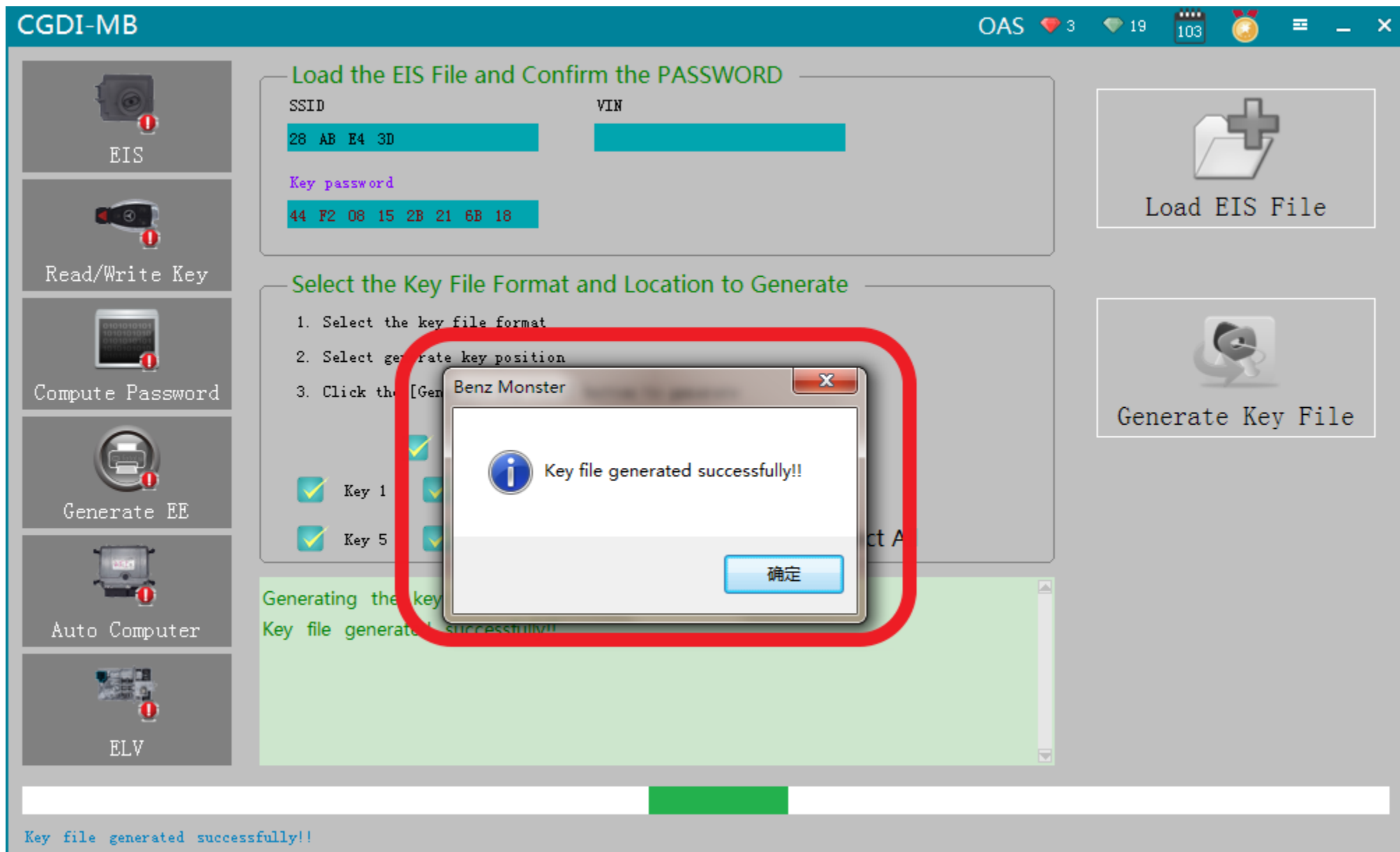
Load EIS File

Generate Key File

```
1 minutes ---
--- Query times: 2 --- Current number of queues: 1 ---Probably waiting time:
1 minutes ---
-- Query times: 3 --- Current number of queues: 1 ---Probably waiting time:
minutes ---
```

Load EIS file successfully!

Click "Generate key file", please wait...



Key file generated successfully, please save data file

- EIS
- Read/Write Key**
- Compute Password
- Generate EE
- Auto Computer
- ELV

Key Basic Information

SSID	Position
Available times	State Activate
Times used	Version
Key password Copy Paste	Track code Copy

Interface:

- Infrared
- NEC Adapter

- Read Key/Chip
- Reset
- Open/Write
- Current hash
- Save BE File

00000000	00 00 00 00 00 00 00 00 00 00 00 00 00 00 00
00000010	00 00 00 00 00 00 00 00 00 00 00 00 00 00 00
00000020	00 00 00 00 00 00 00 00 00 00 00 00 00 00 00
00000030	00 00 00 00 00 00 00 00 00 00 00 00 00 00 00
00000040	00 00 00 00 00 00 00 00 00 00 00 00 00 00 00
00000050	00 00 00 00 00 00 00 00 00 00 00 00 00 00 00
00000060	00 00 00 00 00 00 00 00 00 00 00 00 00 00 00
00000070	00 00 00 00 00 00 00 00 00 00 00 00 00 00 00
00000080	00 00 00 00 00 00 00 00 00 00 00 00 00 00 00
00000090	00 00 00 00 00 00 00 00 00 00 00 00 00 00 00

Go to "Read key"



Insert new key into CG-MB

CGDI-MB OAS 4 20 103

EIS

Read/Write Key

Compute Password

Generate EE

Auto Computer

ELV

Key Basic Information

SSID	00 00 00 00	Position	00
Available times	00	State	Activate Unused
Times used	00	Version	BE
Key password	Copy Paste	Track code	Copy

00000000 00 00 00 00 00 00 00 00 00 00 00 00 00 00 00

00000010 00 00 00 00 00 00 00 00 00 00 00 00 00 00

00000020 00 00 00 00 00 00 00 00 00 00 00 00 00 00

00000030 00 00 00 00 00 00 00 00 00 00 00 00 00 00

00000040 00 00 00 00 00 00 00 00 00 00 00 00 00 00

00000050 00 00 00 00 00 00 00 00 00 00 00 00 00 00

00000060 00 00 00 00 00 00 00 00 00 00 00 00 00 00

00000070 00 00 00 00 00 00 00 00 00 00 00 00 00 00

00000080 00 00 00 00 00 00 00 00 00 00 00 00 00 00

00000090 00 00 00 00 00 00 00 00 00 00 00 00 00 00

Read success!

Interface:

Infrared

NEC Adapter

Read Key/Chip

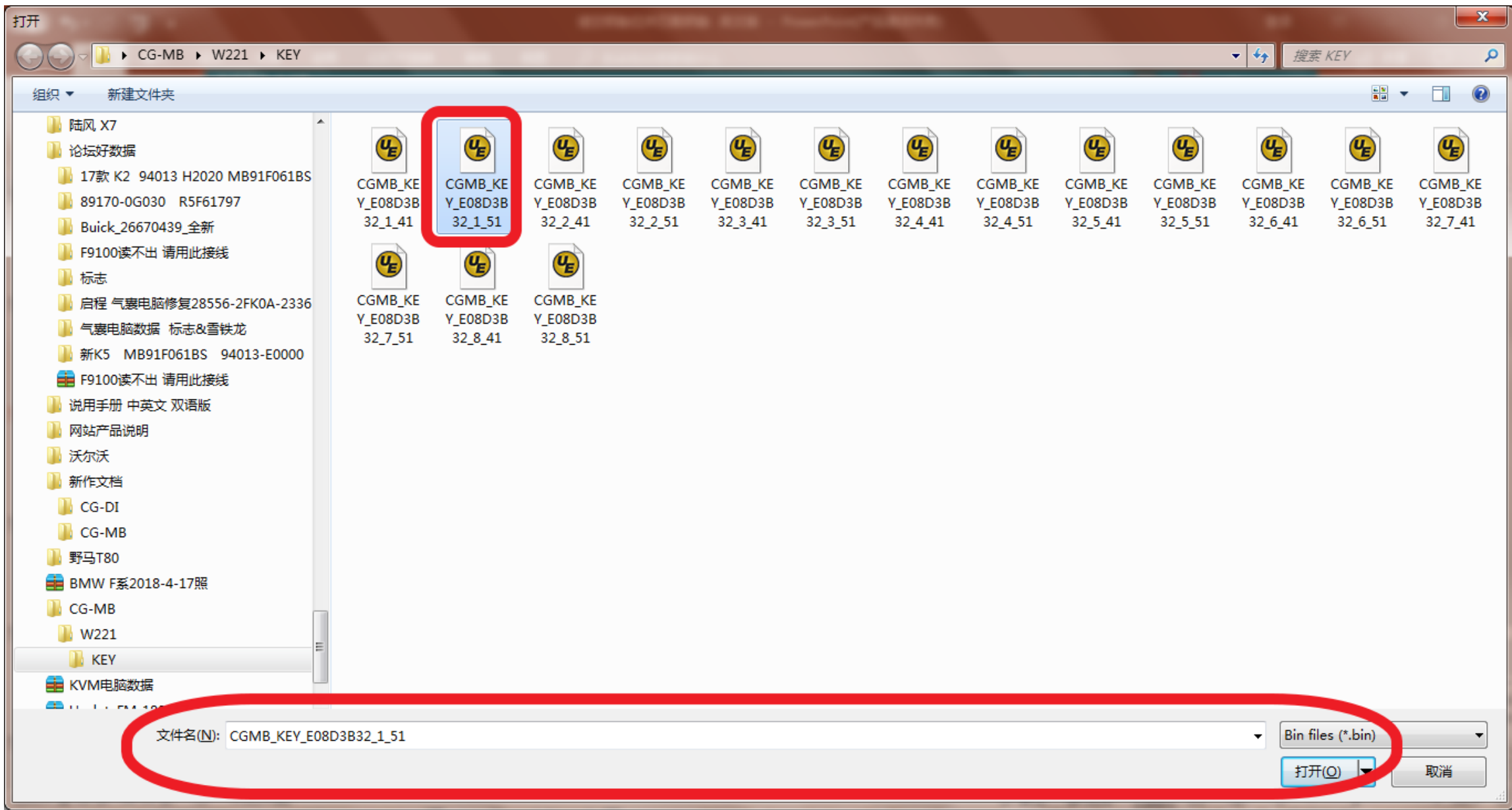
Reset

Open/Write

Current hash

Save BE File

Click read, show related information



Choose—unused key data file, click and open it

CGDI-MB OAS 4 20 103

Key Basic Information

SSID: [redacted] Position: [redacted]

Available times: [redacted] State: [redacted] **Activate**

Times used: [redacted]

Key password: [redacted] **Copy** [redacted] **Copy**

Interface:

Infrared
 NEC Adapter

Buttons: Read Key/Chip, Reset, Open/Write, Current hash, Save BE File

Left Sidebar: EIS, Read/Write Key, Compute Password, Generate EE, Auto Computer, ELV

Hex Dump:

00000000	01 15 82 04 42 5 10	. . . B U . . .
00000010	5C B6 2E 21 1F 9 0D	. . . ! . I . . .
00000020	91 51 57 44 C9 5 38	Q W D . . 8] J
00000030	5E 23 D4 1F D3 E D6	#
00000040	44 3E 2D 08 68 E 1D E8 EB 1E 1D EE 2F 60 FF 06	> - . h n . . .
00000050	B8 28 FB 1F 2C C 04 08 FF 4F 0F 01 FF 03 FF 48	. (. 3 w
00000060	B2 0F 06 99 14 AD 89 78 7C 7F FF FF FF FF FF FF x
00000070	FF FF FF 64 06 D1 6A 95 FF 09 2E 7F FF 00 00 02	. . . d . . j . .
00000080	FF FF FF FF FF FF FF FF 6E D1 DB EA E0 8D 3B 32 n
00000090	01 01 01 01 FF FF FF FF 73 0C FF FF FF FF 04 FC s

Dialog Box: Benz Monster Write success! 确定

Write success!

Write success, put EIS back, then just get on car to learning it