

***CG-PRO users  
manual***

***V 1.7.0 - 2021.11***

# Catalogue

<b>1. Statement.....</b>	<b>Three</b>
<b>2. Precautions.....</b>	<b>Three</b>
<b>3. Equipment introduction.....</b>	<b>Four</b>
3.1 Glossary.....	Four
3.2 Product List.....	Five
3.3 Host interface Introduction.....	Seven
3.4 Main functions.....	Seven
<b>4. Software introduction.....</b>	<b>Eight</b>
4.1 Driver Installation.....	Eight
4.2 Software wizard.....	Eleven
4.3 Further introduction for the software.....	Eighteen
4.4 Introduction to the rest of the features.....	Twenty-five
4.5 Device activation.....	Twenty-nine
<b>5. Model support list.....</b>	<b>Thirty</b>
5.1 Anti-theft computer.....	Thirty
5.2 Instrument mileage.....	Thirty-three
5.3 Smart computer.....	Thirty-six
5.4 ECU.....	Thirty-six
5.5 Key matching.....	Forty-three
5.6 Gateway computer.....	Fifty-nine
5.7 VIN.....	Fifty-nine
5.8 Key Refresh.....	Fifty-nine
5.9 Airbag.....	Sixty-three
5.10 Others.....	Sixty-four
<b>6. Chip support list.....</b>	<b>Sixty-five</b>
6.1 CPU->MCU.....	Sixty-five
6.2 Storage Chips.....	One hundred

## **1. Statement**

Dear all valuable customer, thanks for choosing our CGPRO products. These instructions will give you a detailed description of equipment, software and features of this product. Before using , please read this instruction manual to help you understand. Please keep the following in mind before using:

CGPRO only can use for normal and legal equipment vehicle maintenance, please do not use it for illegal purposes;

If used illegally, user need to borne all risks and legal liabilities;

If used unreasonably, the user need to borne the data loss and damage;

This instruction manual will try our best to introduce CGPRO for you. If have any questions, please consult before and after sales.

## **2. Precautions**

To avoid damage the equipment, vehicles and property, please observe the following precautions:

Before soldering operation, to avoid short-circuiting, please ensure

the device and each electronic parts are in a power-off;

Please solder and operate equipment in a static-free environment;

Please do not place the device in a humid, ash, or direct sunlight environment for long times. and not stress, fading, or immersing equipment.

Before operating the equipment, to avoid damage to the equipment or electronic parts, please confirm the correctness of the wiring .

Please do not connect to a inconsistent specifications power supply;

Please be cautious to avoid damage to equipment and electronic parts caused by negligence.

## 3. Equipment introduction

### 3.1 Glossary

*EEPROM* : refer to an programmer memory with electricity, can wipe and program. It is a memory chip that does not lose data after power off.

*extFLASH* : External non-volatile memory.

*intFLASH* : Internal non-volatile memory.

*DSLASH* : Data flash memory for storing chip data.

*PFLASH* : Program flash memory for storing chip programs.

*Partition* : 9S12XE series unique operation, used for EEPROM and DFLASH capacity size setting.

*Decryption* : Some chips have unique operations, which can change the chip from inoperable FLASH to operate flash, and clear all data in FLASH.

*Encryption* : Some chips have unique operations, which can change the chip from unencrypted state to encrypted state, and the data has not changed.

## 3.2 Product List



①



②



③



④



⑤



⑥



⑦



⑧

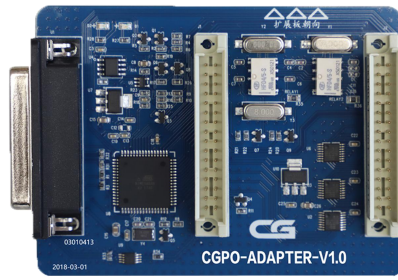


⑨



- ① CG-PRO Host
- ② DB25 Adapter
- ③ USB Cable
- ④ M35080 Adapte
- ⑤ 8 Pin/V850 Adapter
- ⑥ HC711 Adapter
- ⑦ 12P Cable
- ⑧ 35160WT Adapter
- ⑨ CAN Adapter

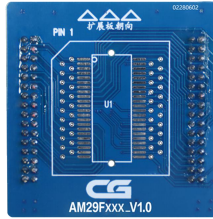
# CG-PRO Users manual



⑩



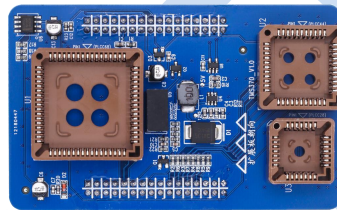
⑪



⑫



⑬



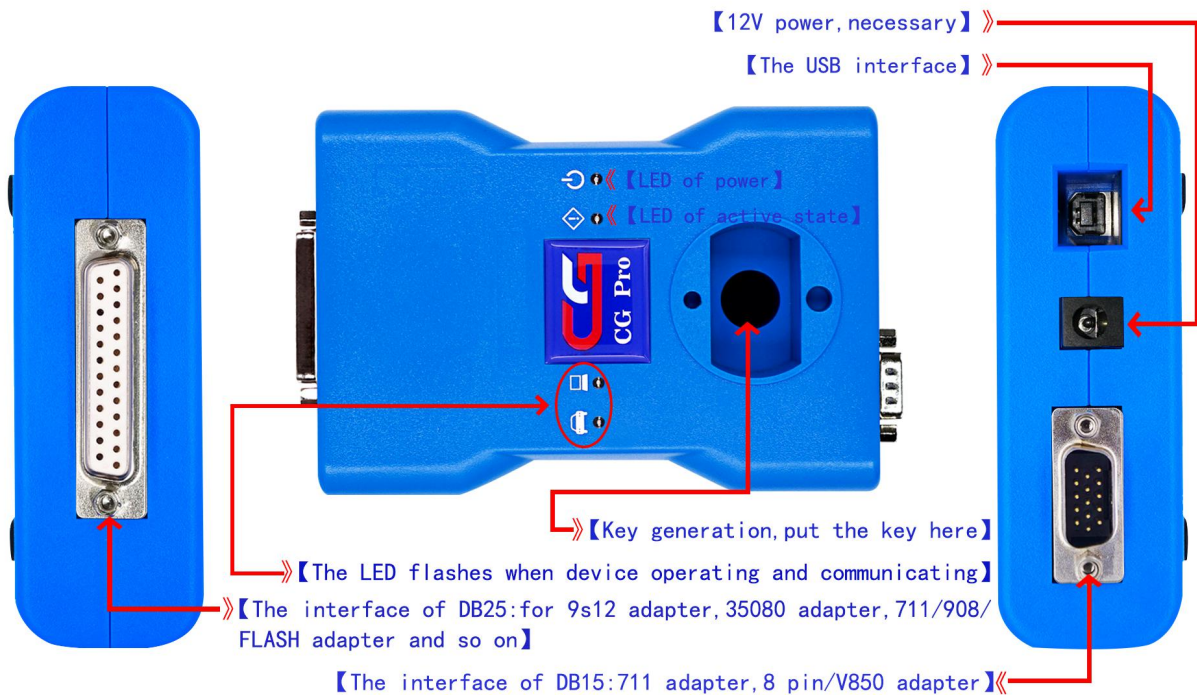
⑭

CGPRO Integrated adapter: (Optional, need to separately purchase )

- ⑩ CG-PRO expanding board
- ⑪ AM29BLXXX adapter
- ⑫ AM29FXXX adapter
- ⑬ HC705/908 adapter
- ⑭ TMS370 adapter

## 3.3 Host interface Introduction

Following is an introduction to the CGPRO host interface. It is recommended that customer connect the connected line of the DB25 cable to the device firstly, and then connect the 12V cable and USB cable in turn. This sequence is safer to prevent equipment from damage.



## 3.4 Main functions

1. Support various kinds of encryption chips, powerfully crack, steady fast
2. Adopt high-end technology, real-time monitoring to prevent data loss
3. Used for the high-end cars such as Mercedes-Benz, BMW, Land Rover, Jaguar, Porsche, Audi, etc., it is favored by their peers
4. BMW Instruments 35160WT and 35128WT World Premiere
5. Used for various anti-theft computers, such as BMW CAS, Mercedes-Benz EIS, Porsche BCM with clear wiring diagram, guided operation, this device is simple and convenient
6. With independent intellectual property rights, we can increase the module chip arbitrarily according to customer needs

This product is powerful, stable and safe to operate, and excellent cost performance. Mainly supports the following features:

- Support reading and writing of anti-theft computers for Mercedes-Benz, BMW, Audi, Porsche, Jaguar Land Rover, Roewe, and MG;
- Support intelligent tuning instruments for Mercedes-Benz, BMW, Volvo, Honda, Hyundai, Kia, Suzuki, Changan and other models;
- Support smart computer reading and writing repairs of Jaguar Land Rover, Volvo and other models;
- Support reading and writing repairs of ECU such as Delphi;
- Support reading and writing repair of gateway computers such as Mercedes-Benz;
- Support key matching of BMW, Jaguar Land Rover and Porsche;
- Support reading and writing repair of Mercedes-Benz W221 LU computer;
- Support reading and writing repair of BMW footstep space computer, F series SZL module ect
- Support reading and writing repair of Audi direction lock computer;
- Supports professional programming of MCU such as NEC, MC9S12, mc9s08, HC (7) 05, HC (7) 11, HC (9) 08, HC (9) 12, Fujitsu, microchip, etc., and memory chips such as parallel admflash, m35080, 8-pin chip, etc.

## 4. Software introduction

### 4.1 Driver Installation

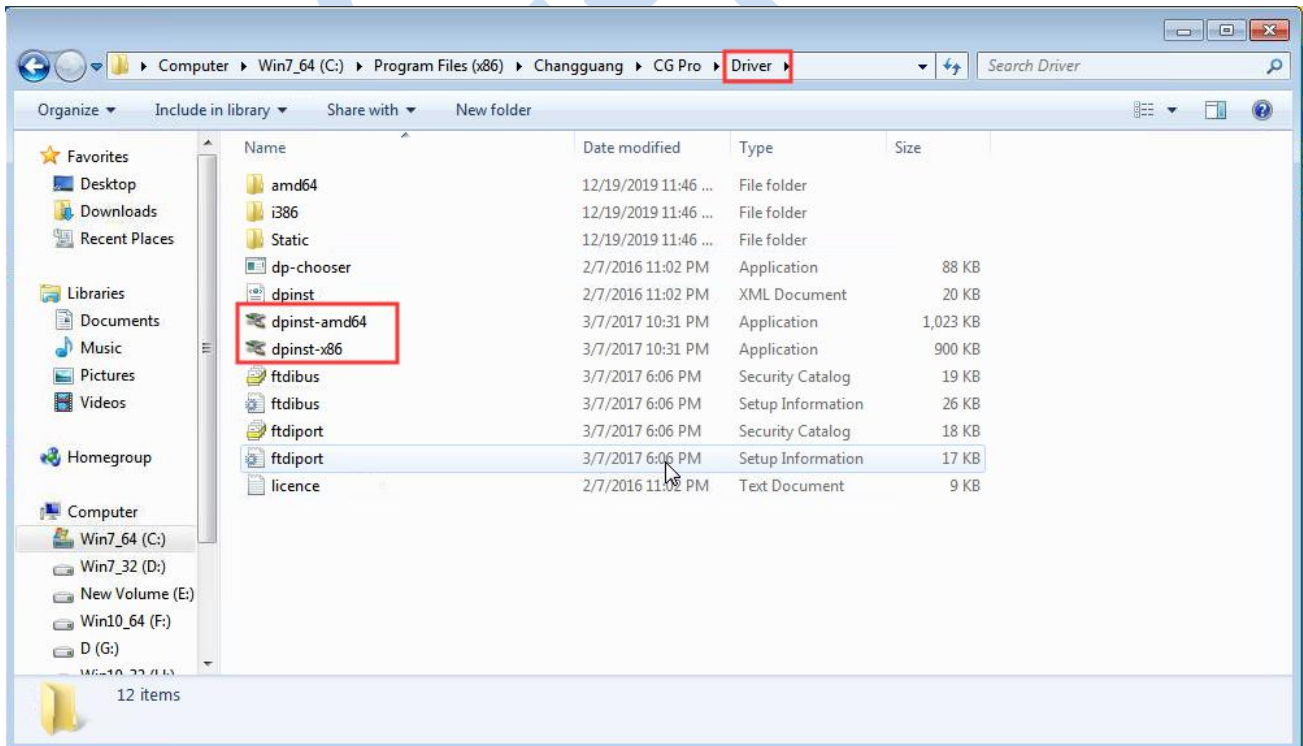
After installing CGPRO, first time opening the software, it will pop up automatically the driver installation wizard. Just install it step by step according to the operation. The installation wizard is shown as below:



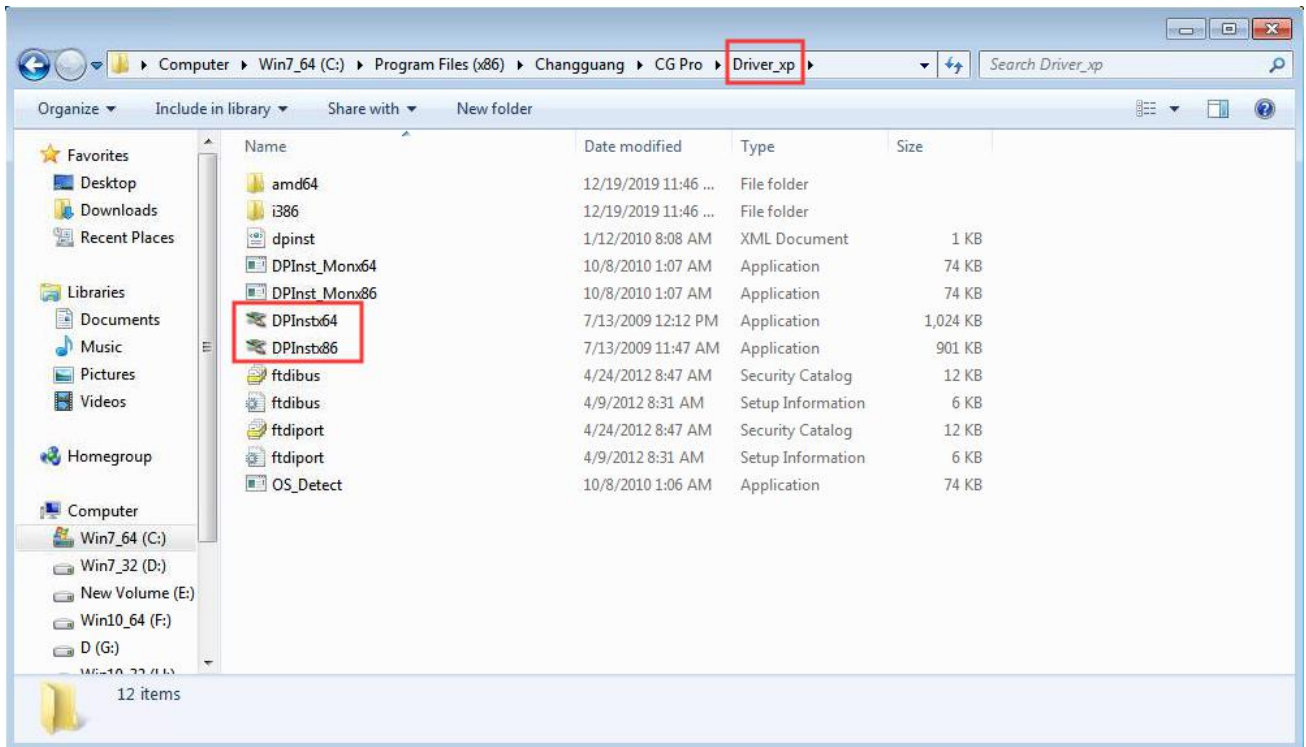


If the driver does not work properly, or the device cannot be connected, etc problem, and need to reinstall the driver, you can manually install it by finding the installation package in the installation directory.

For systems with WIN7 and above, please look for the installed drivers in the Driver folder. The 64-bit system is equipped with dpinst-amd64.exe; the 32-bit system is equipped with dpinst-x86.exe. As shown below:

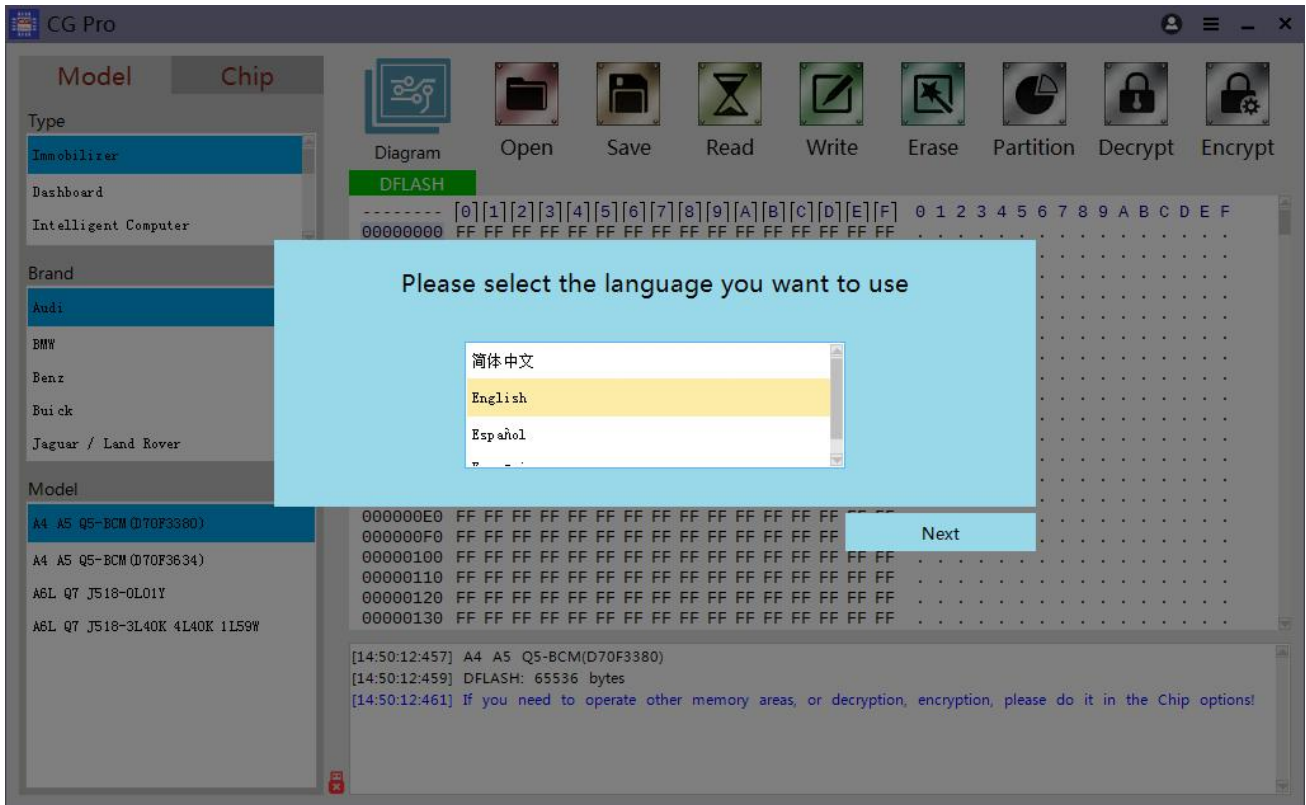


For the WINXP system, look for the installed driver in the Driver\_xp folder. The 64-bit system is equipped with DPInstx64.exe; the 32-bit system is equipped with DPInstx86.exe. As shown below:

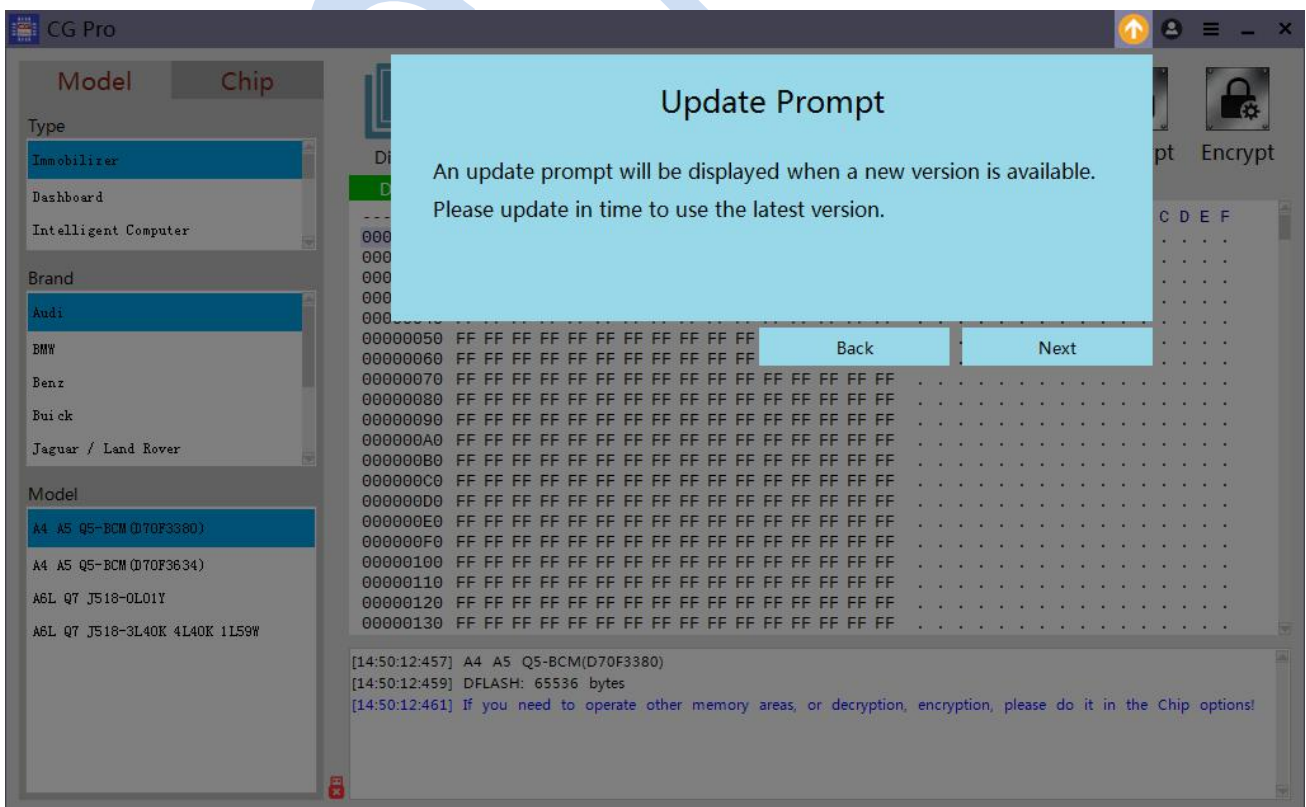
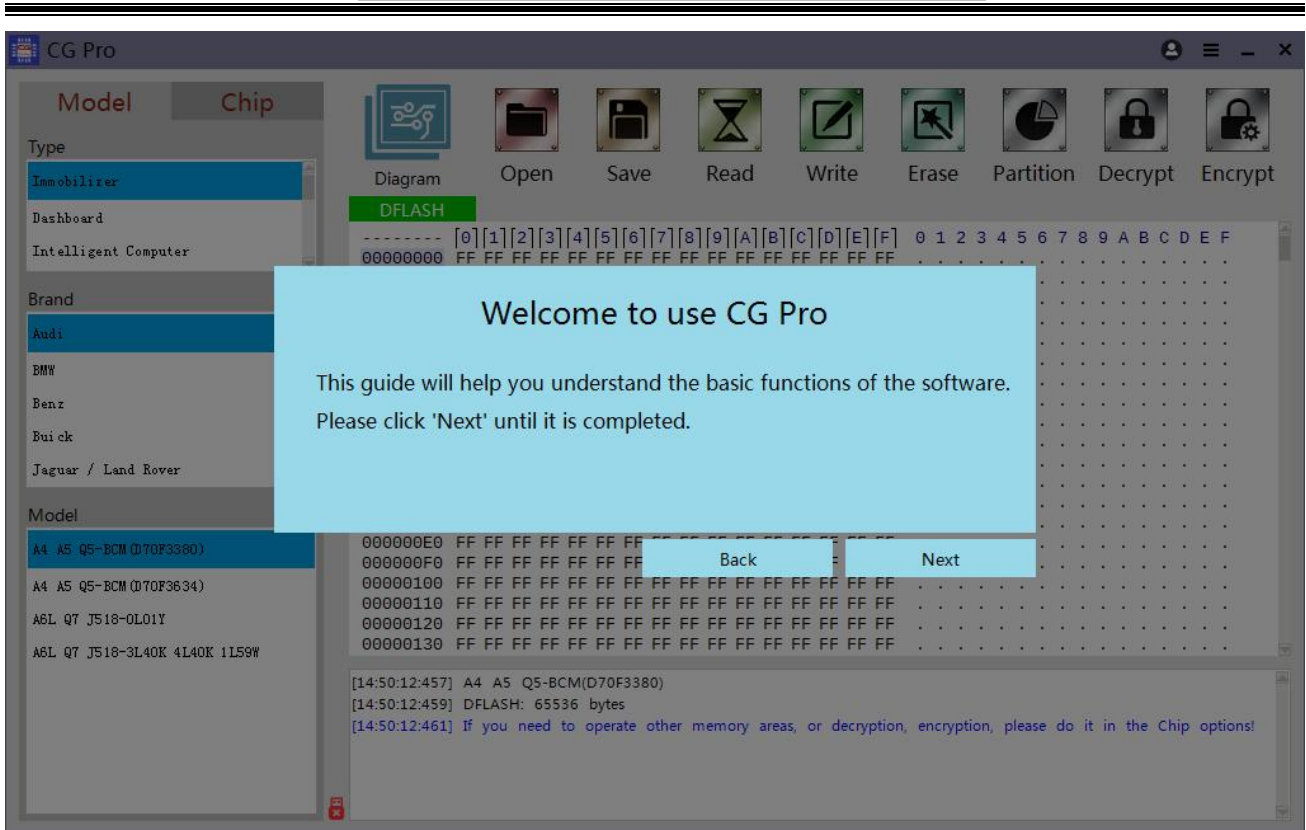


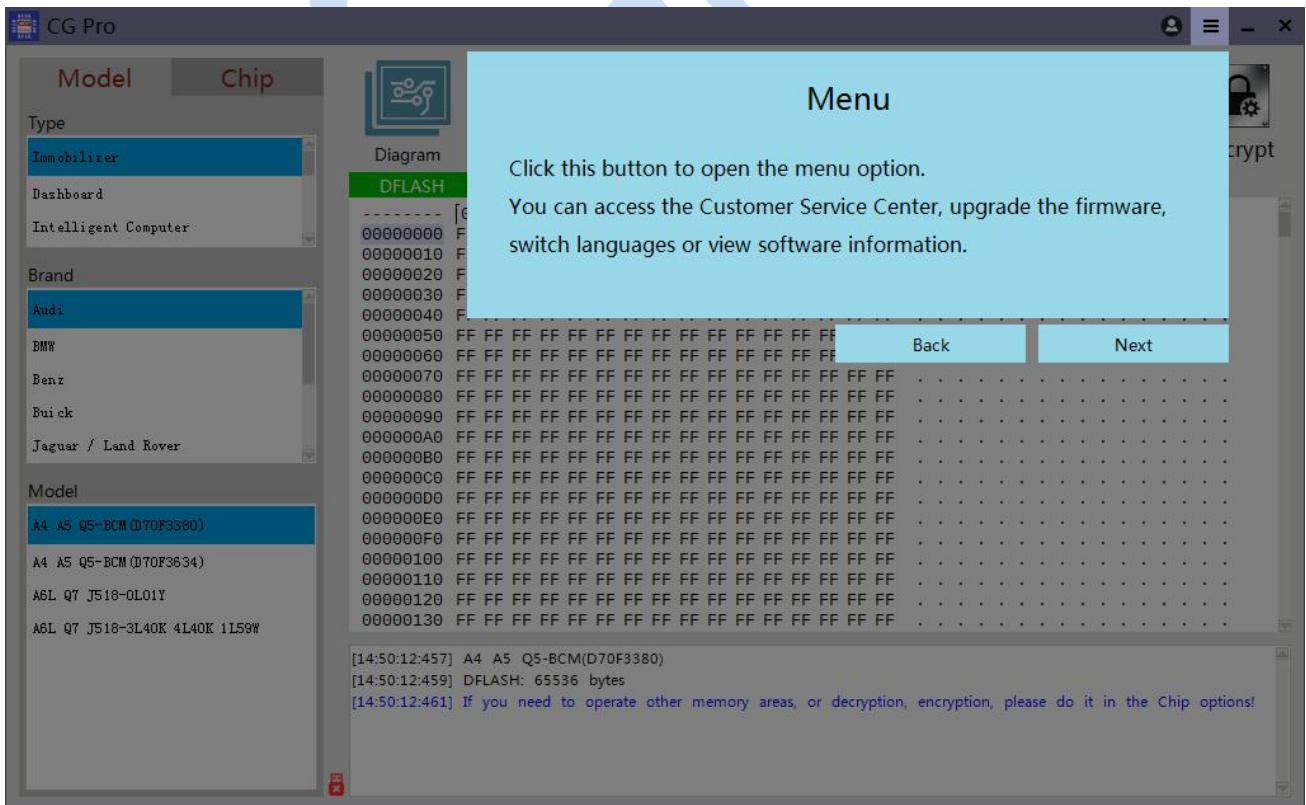
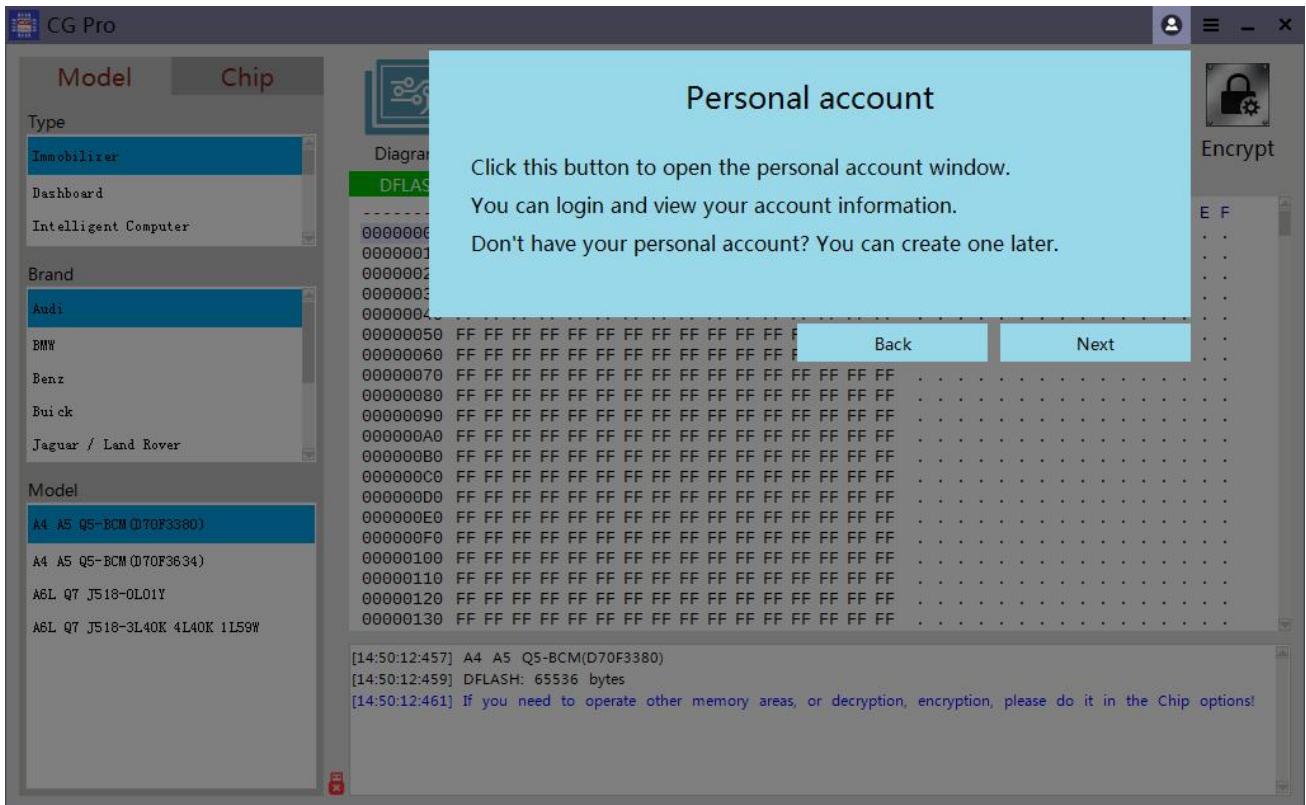
## 4.2 Software wizard

When firstly opened, there are the installation driver wizard and software introduction wizard. the software wizard will probably show you how to use the CGPRO software. As shown in the following picture:

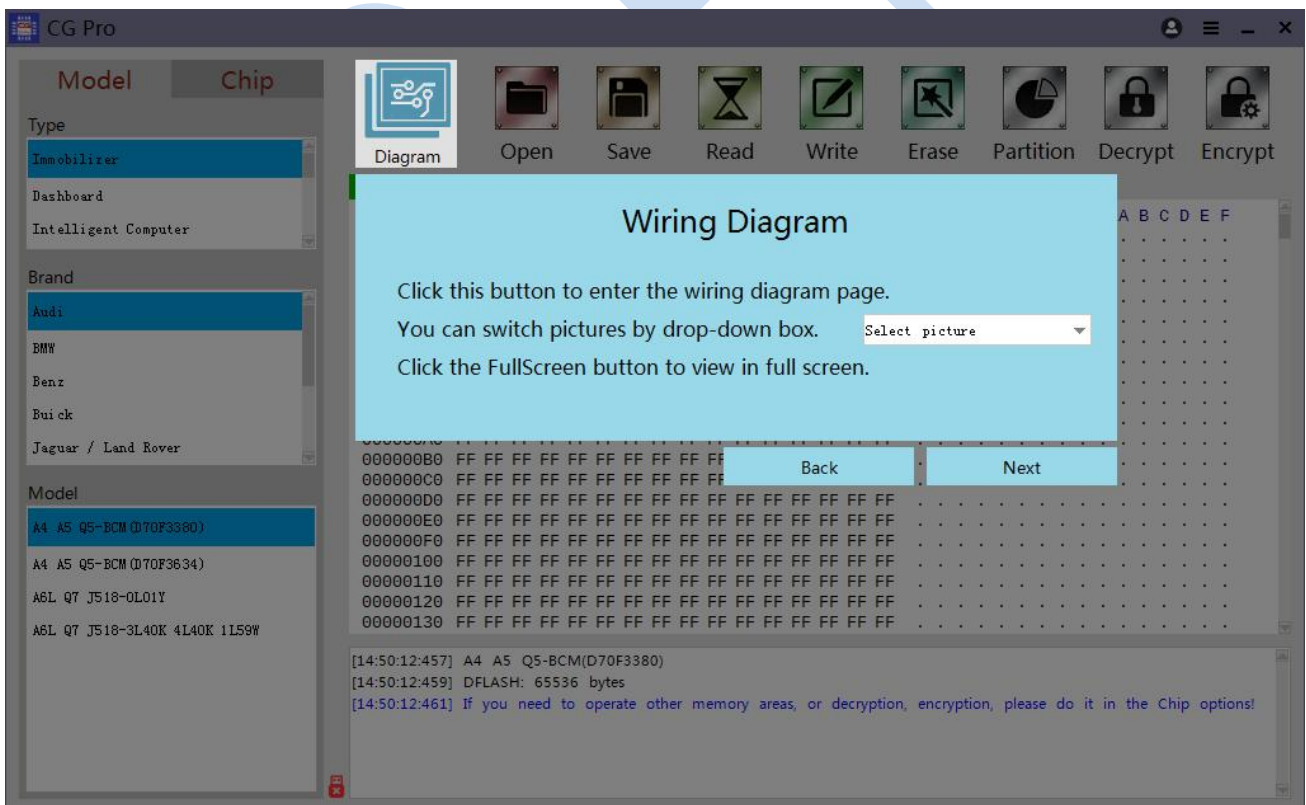
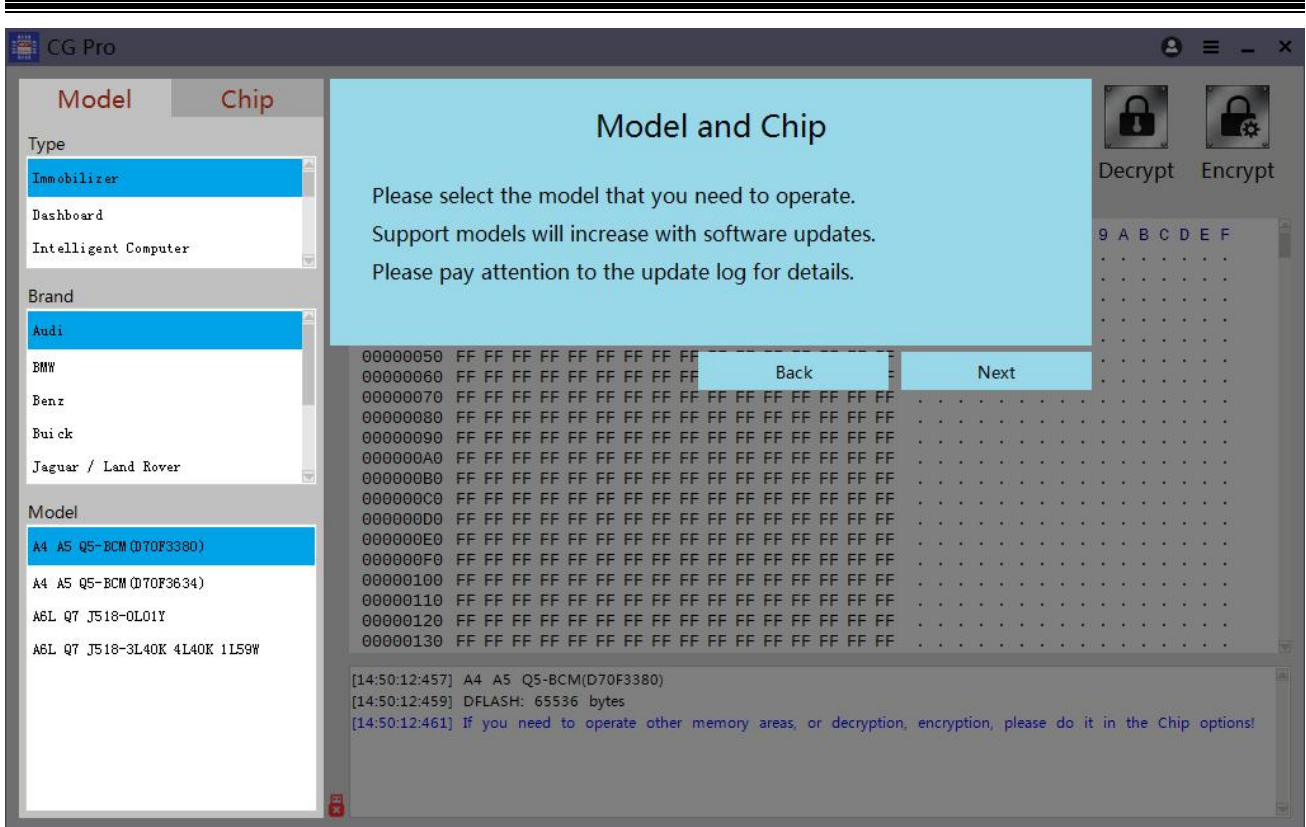


# CG-PRO Users manual

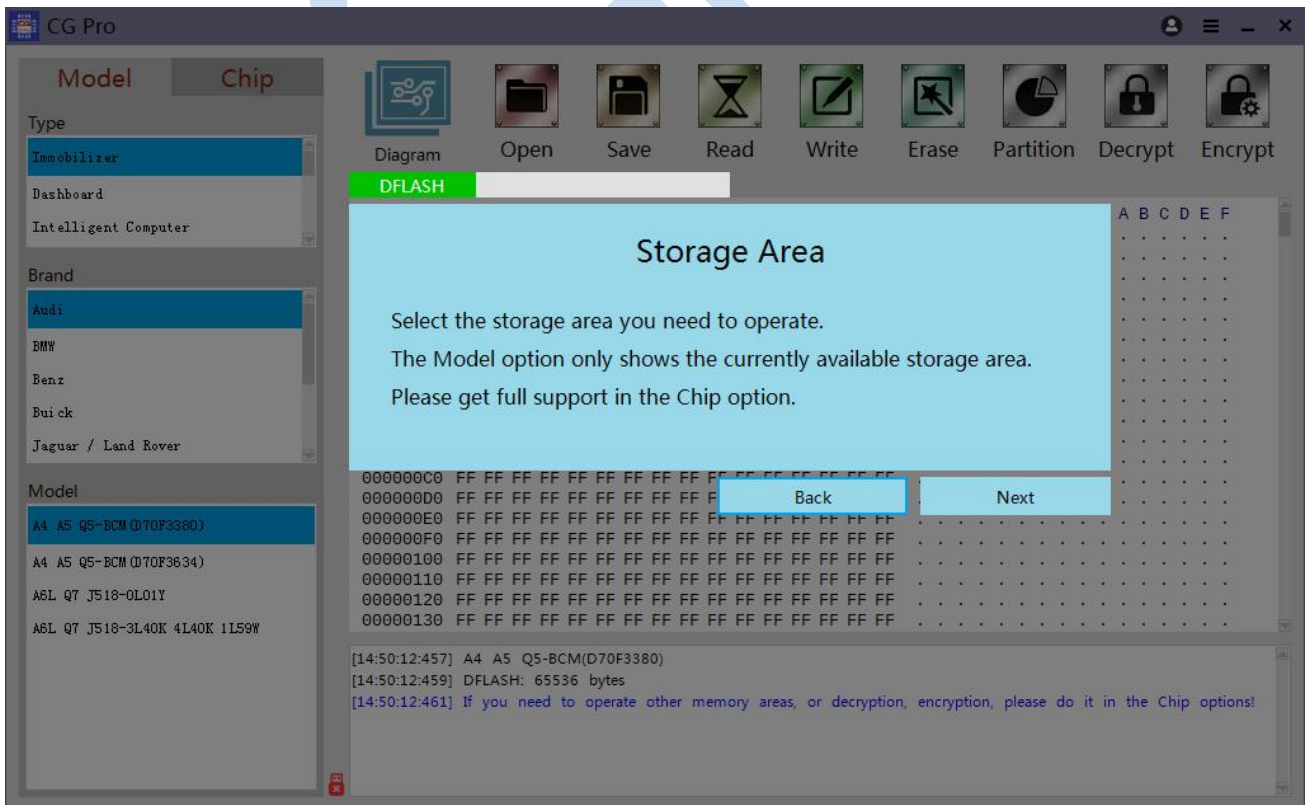
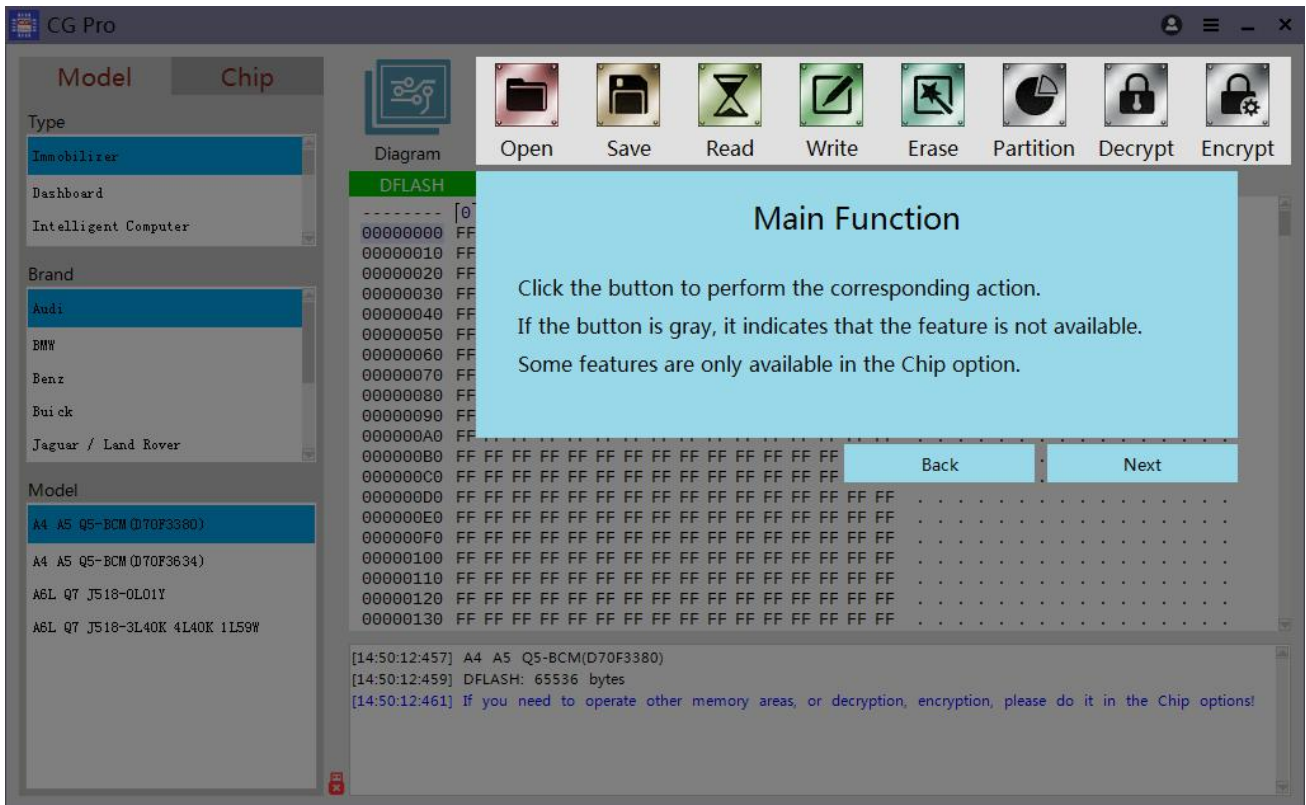




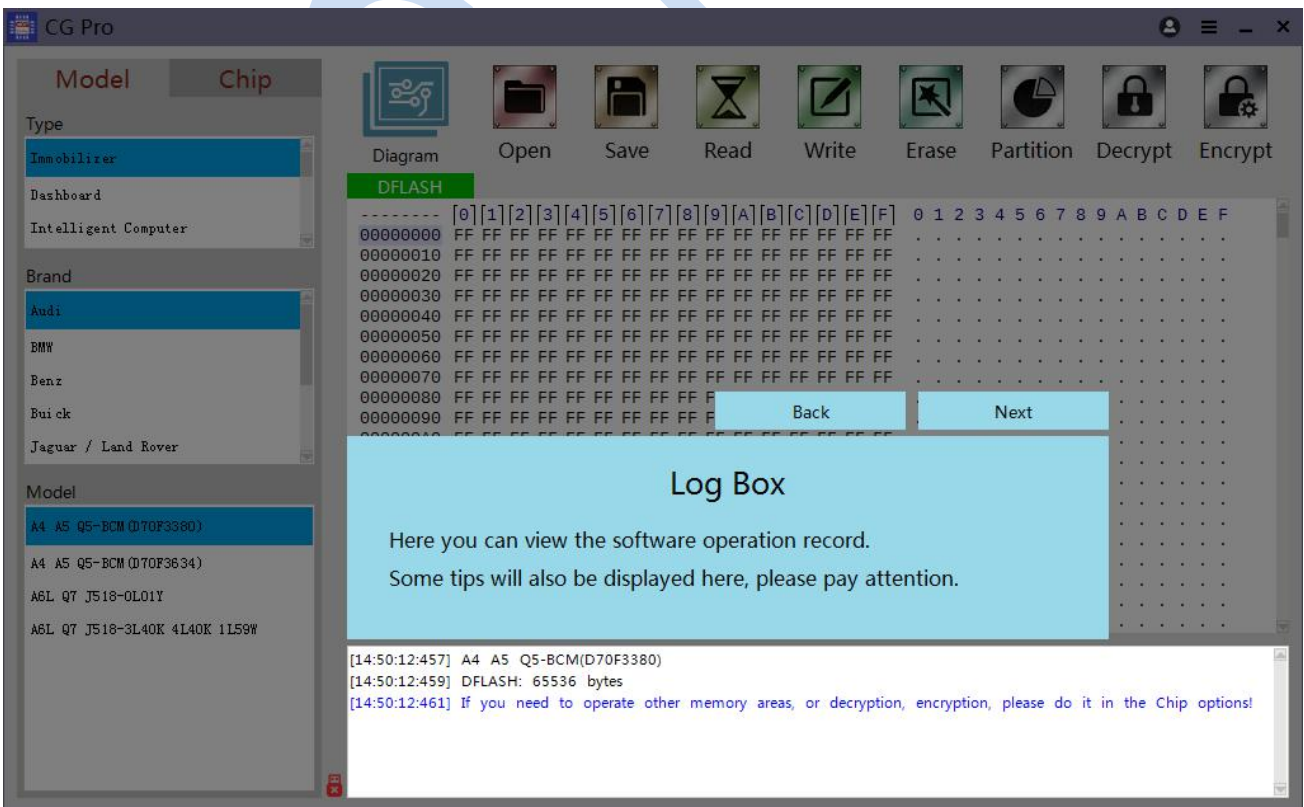
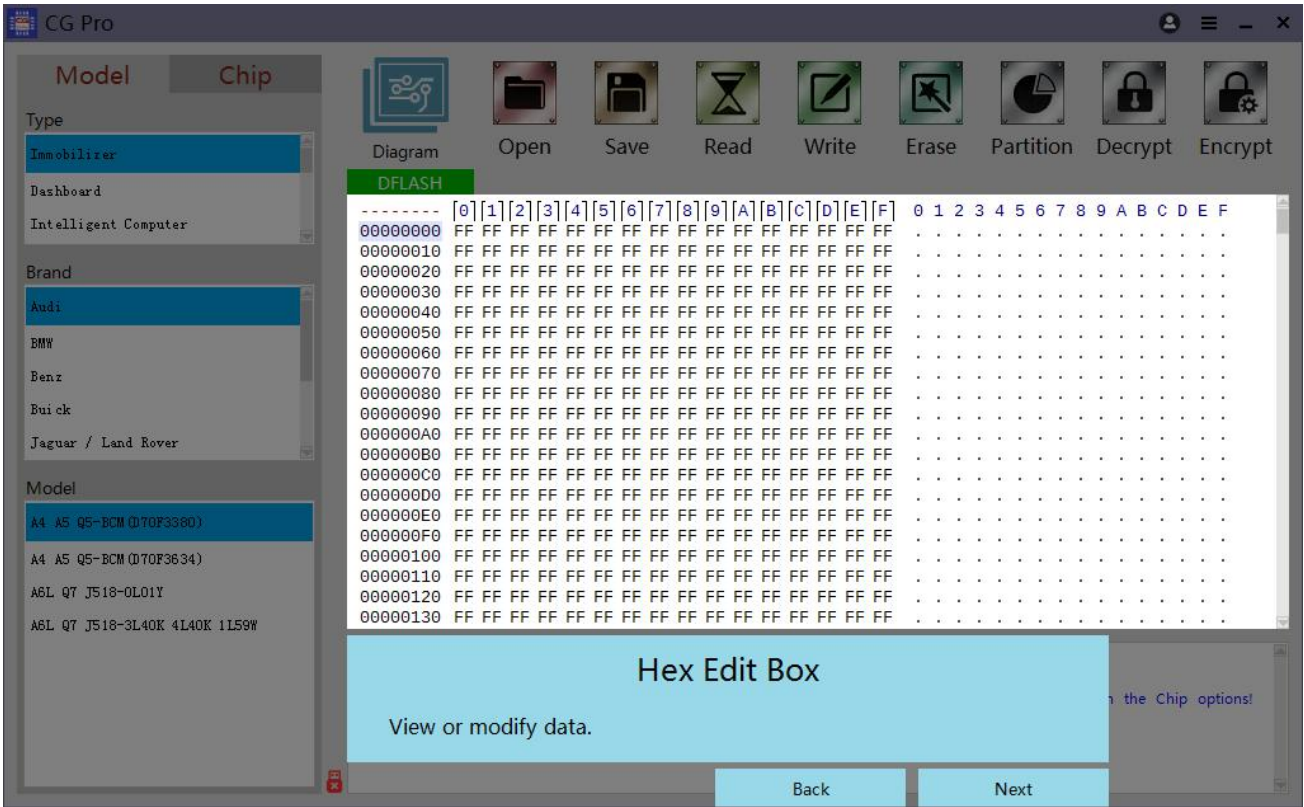
# CG-PRO Users manual



# CG-PRO Users manual

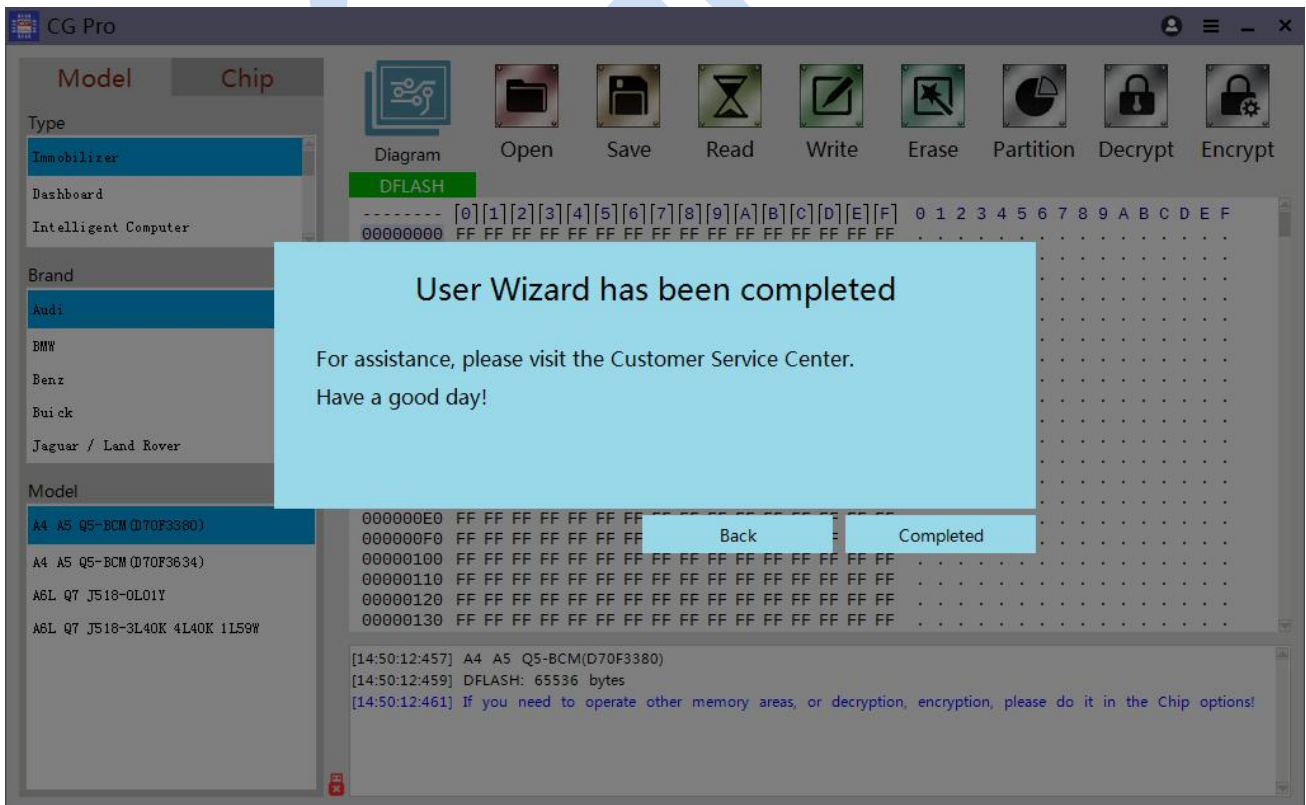
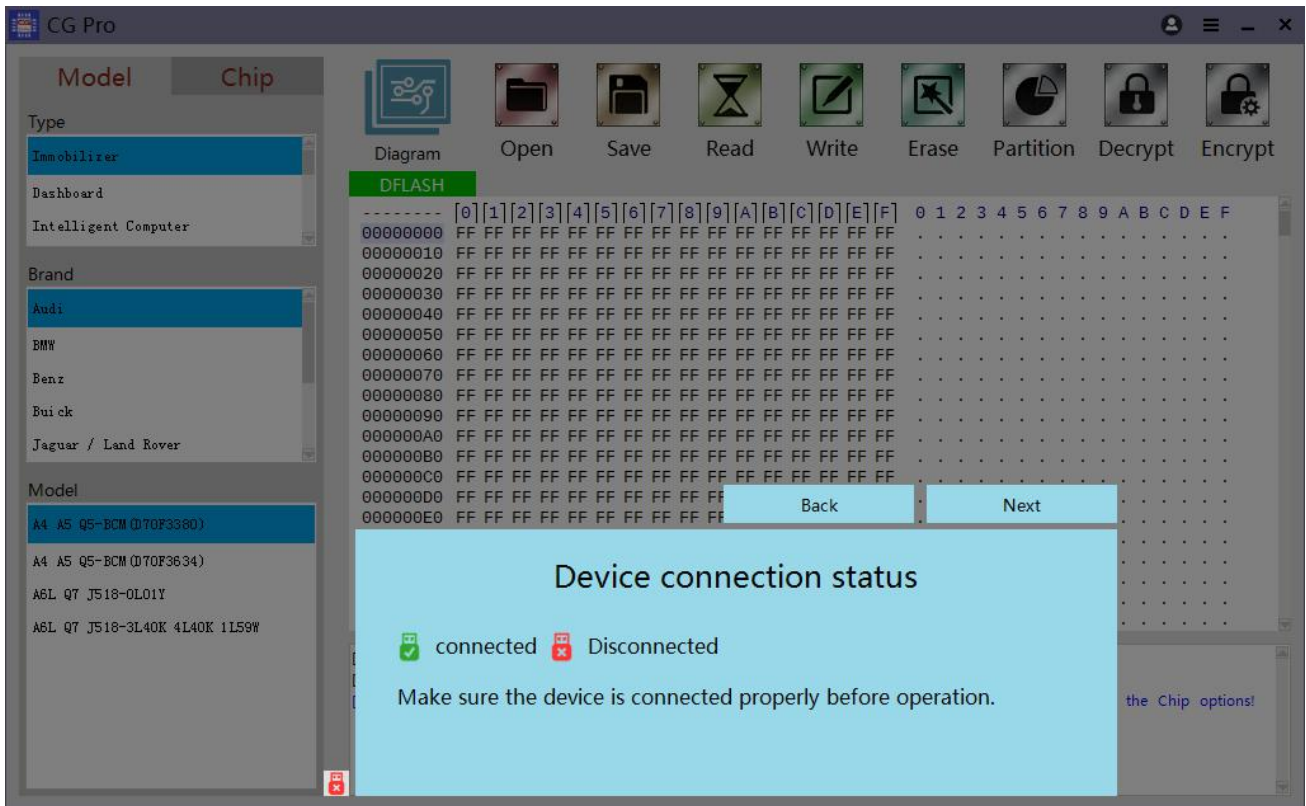


# CG-PRO Users manual





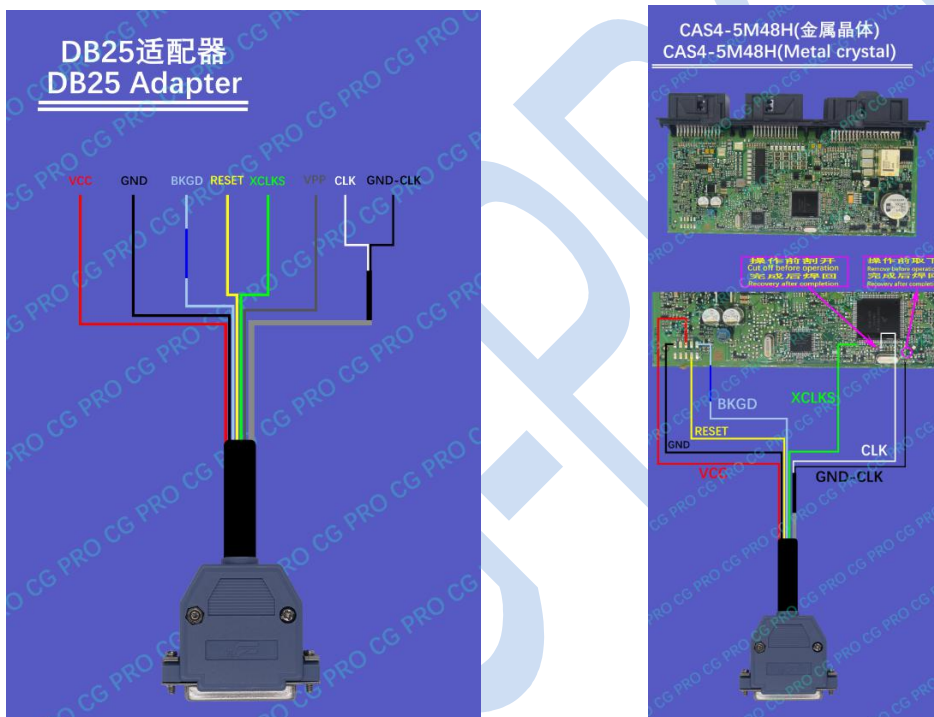
# CG-PRO Users manual



## 4.3 Further introduction for the software

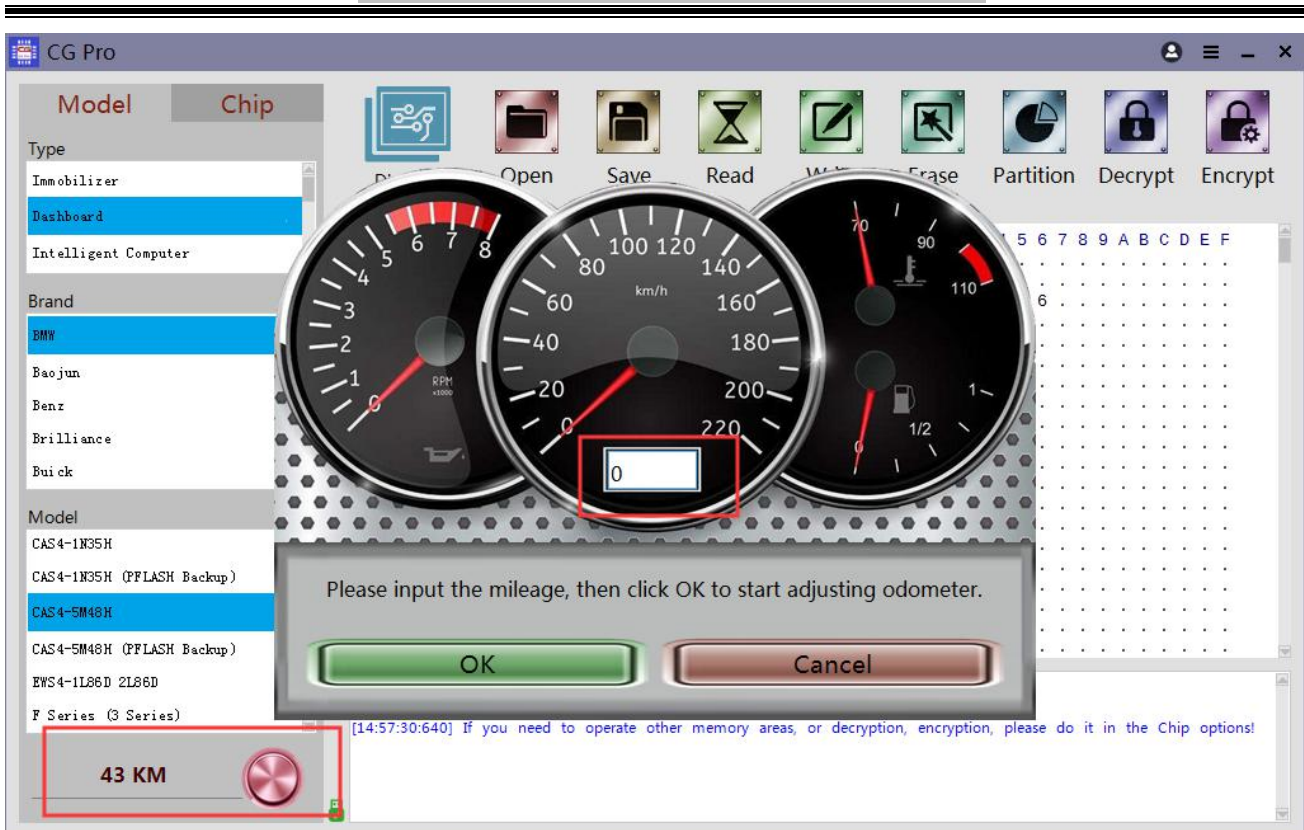
CGPRO software is mainly divided into two parts. One part is car models. In the model, you can operate a specific model, which is convenient and smart.

- Anti-theft computer: In the anti-theft computer, you can select the area where the anti-theft data is located. Just connect the line and click to read, so it can safely and stably read out the required data for you. If it is an encrypted computer, CGPRO will intelligently help you decrypt and read the data. The wiring diagram provides you with a picture of the adapter which you need and a specific wiring diagram for the anti-theft computer. As shown below:



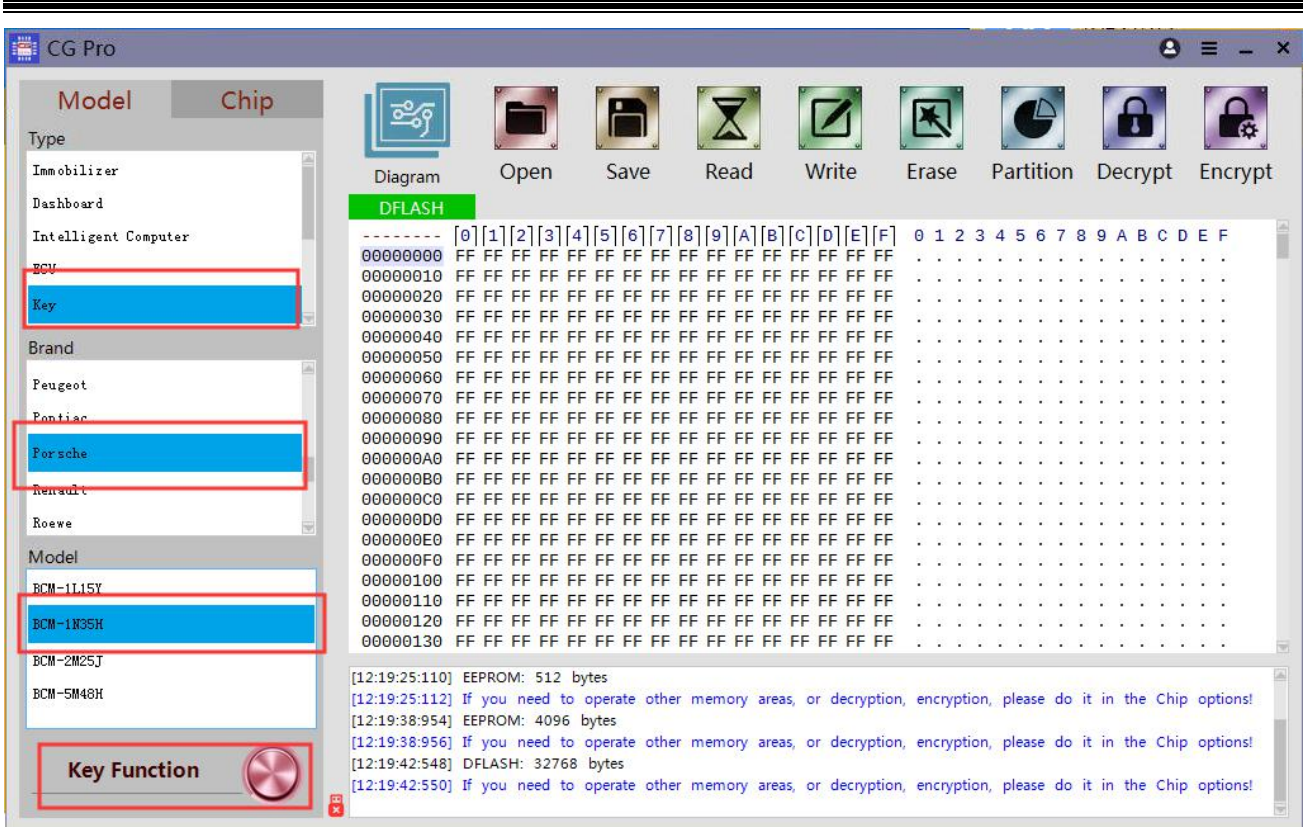
- Meter mileage: In the meter mileage, has been selected the area where the number of kilometers for you. Just connect the line according to above picture and click to read the data. Or the number of kilometers will be displayed directly below the software, or click to adjust the mileage. Enter the number of kilometers that you want to modify and click OK. The software will automatically modify the number of kilometers for you, which is convenient and simple. As shown below:

# CG-PRO Users manual

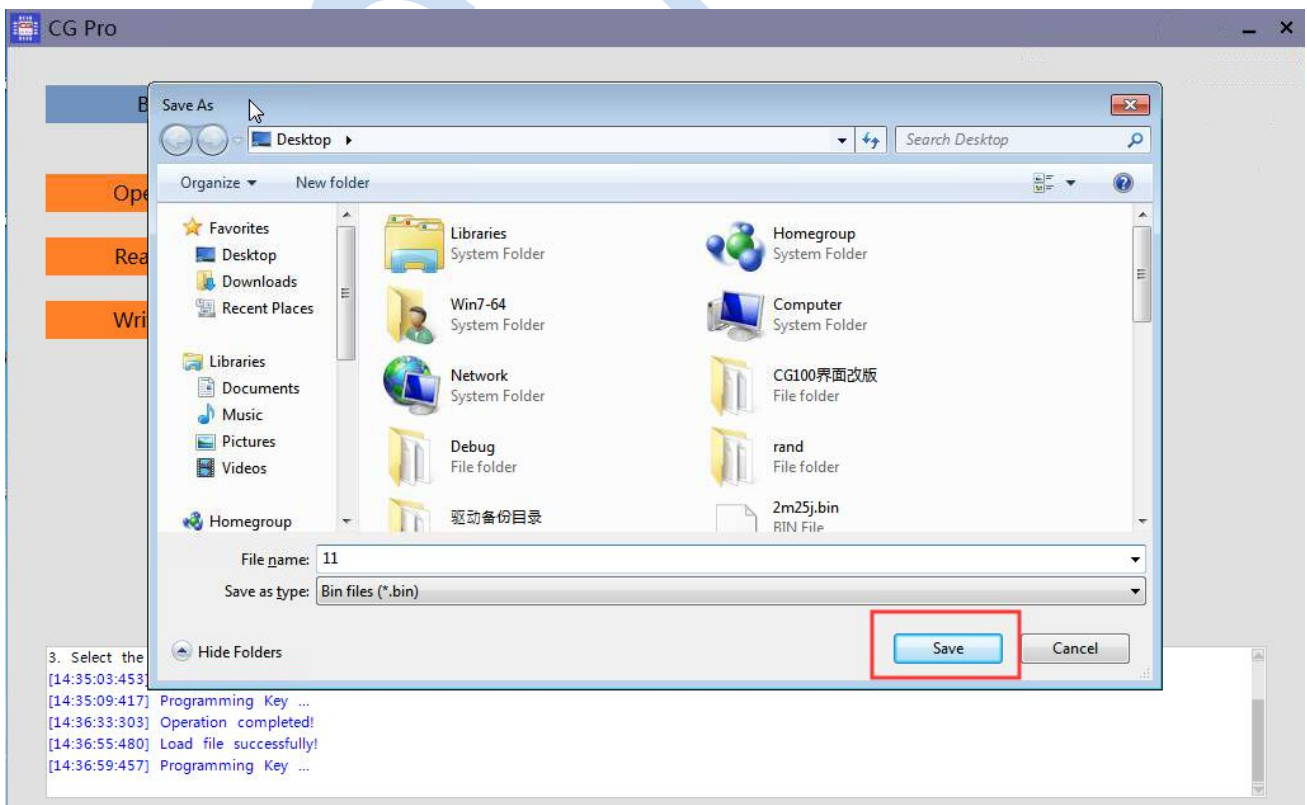
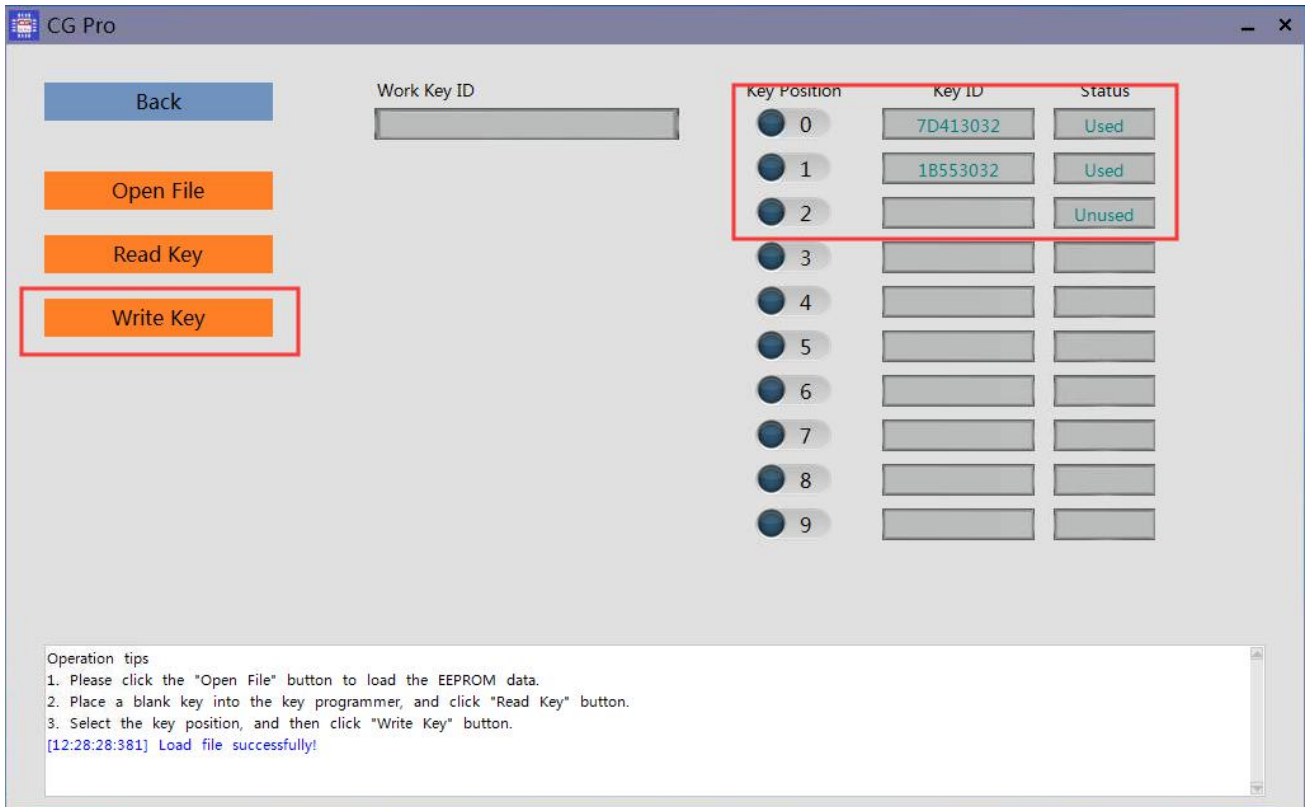


- Intelligent computer: The operation is same as anti-theft computer. Firstly connect the line according to the picture. After clicking and reading, the software will automatically read the data of the computer only for you..
- ECU: The operation is same as anti-theft computer. Firstly connect the line according to the picture. After clicking and reading, the software will automatically read the data of the computer only for you.
- Key matching: currently available add key for BMW, Porsche, and Land Rover. Select the model corresponding to your anti-theft computer, then load the corresponding anti-theft data according to the prompts and select the key location. After the key is written, the data to be written back to the computer board is saved. Write the data back to the computer board and get on car. As shown below:

# CG-PRO Users manual



# CG-PRO Users manual



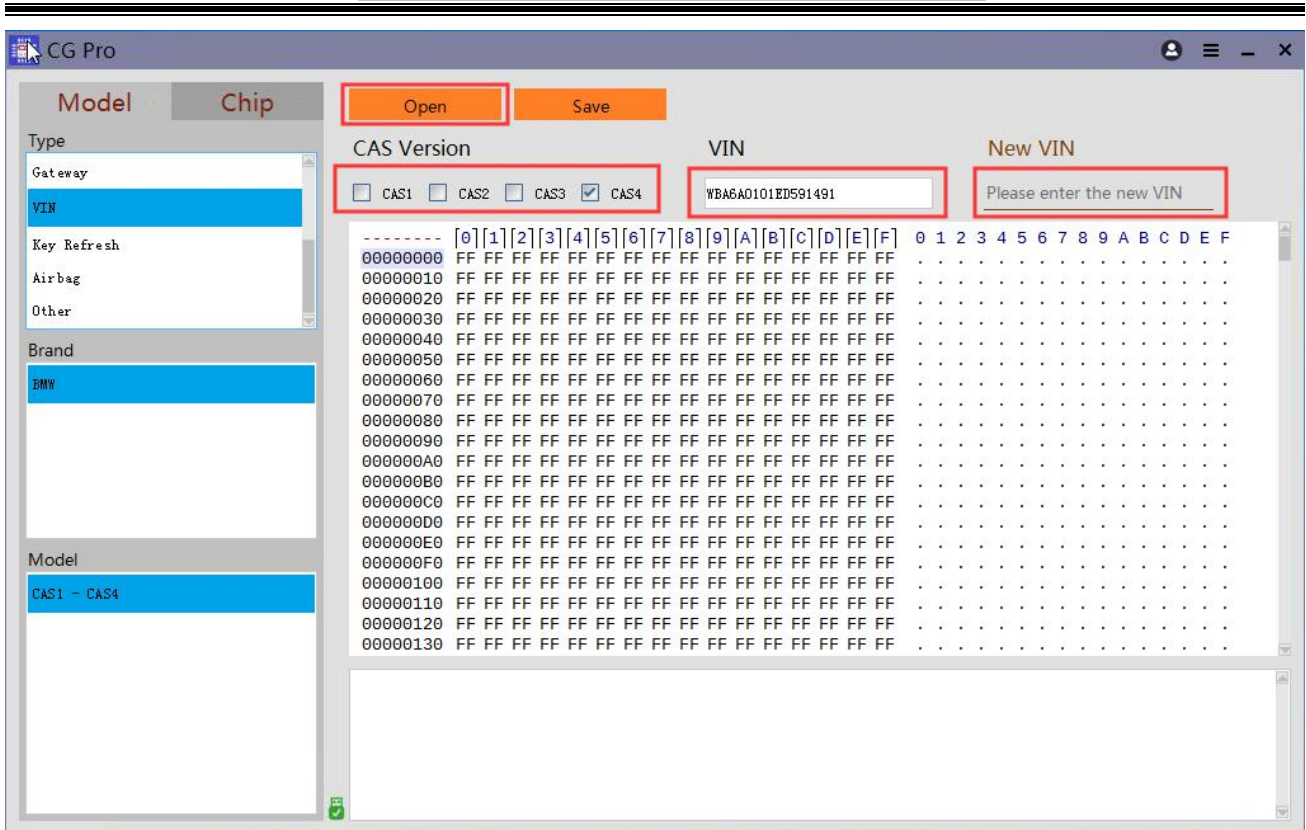
# CG-PRO Users manual

The key recognition signal of some models is not good, so the location should be identified as shown below, otherwise it may cause the matching failure.

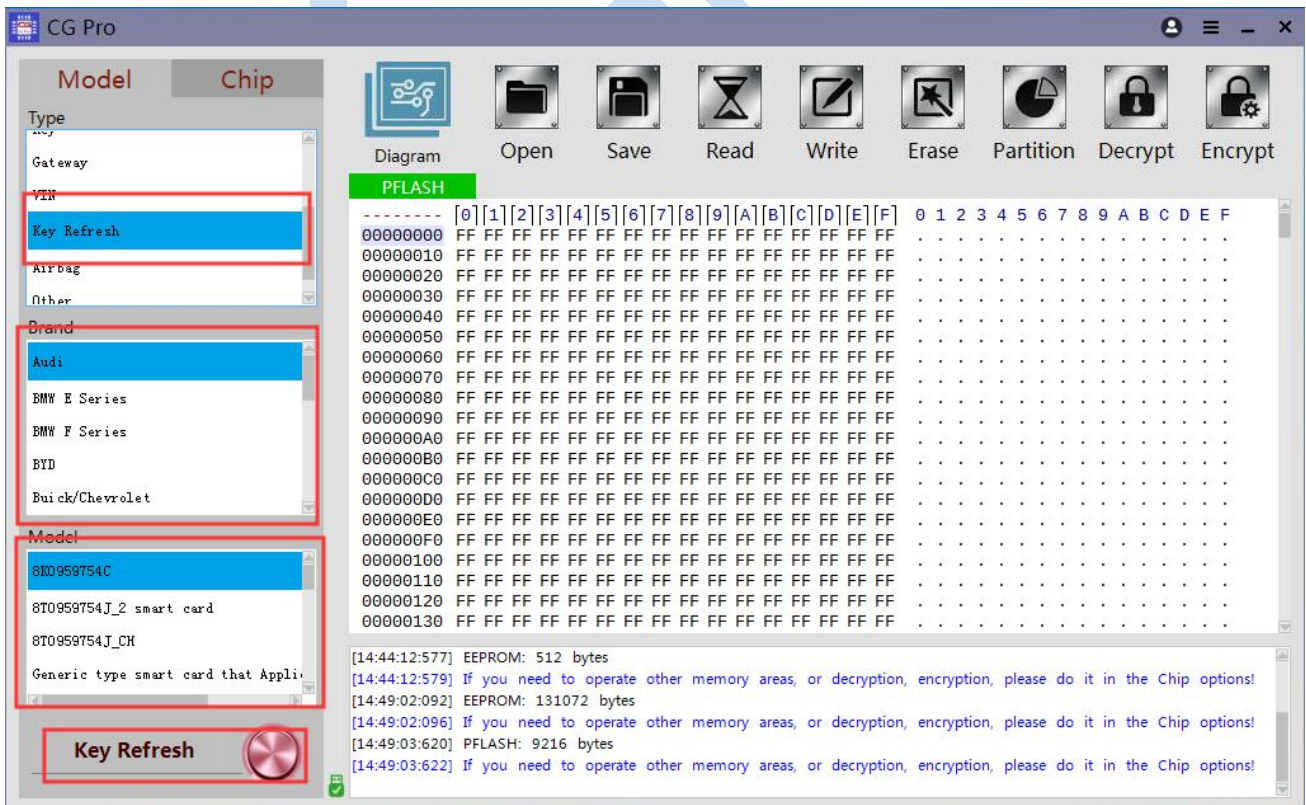


- Gateway computer: The operation is same as anti-theft computer. Firstly connect the line according to the picture. After clicking and reading, the software will automatically read the data of the computer only for you.
- VIN: After entering the operation interface, click to load the CAS1~4 file. The software will automatically recognize the data version and display the VIN. Enter the new VIN in the VIN below, and save the modified VIN.

# CG-PRO Users manual



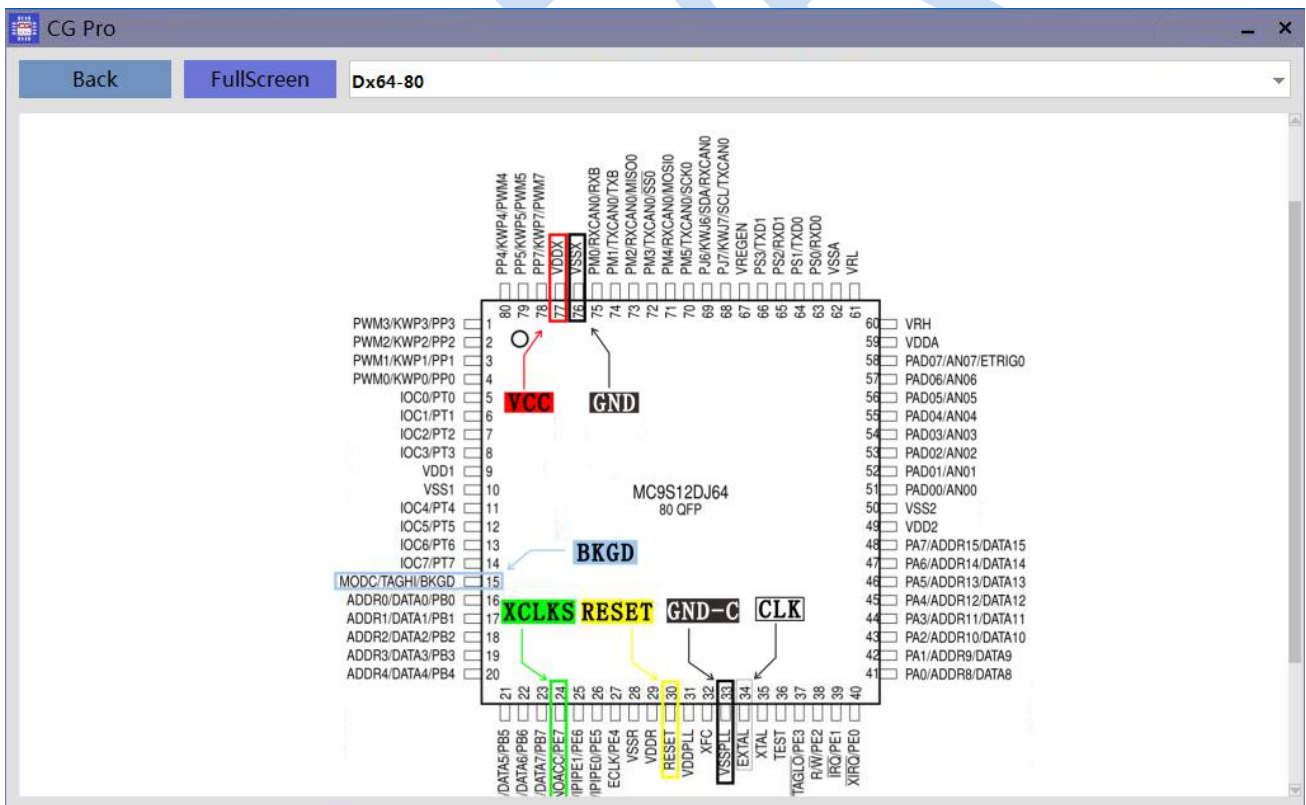
- Key Refresh: According to the corresponding key, select the corresponding model. After connecting the line according to the pin diagram, click the button beside [Key refresh], and the software will successfully enter the key data.



- Airbag: The operation is same as anti-theft computer. Firstly connect the line according to the picture. After reading, the software will automatically read the data of the computer only for you.
- Others: The operation is same as anti-theft computer. Firstly connect the line according to the picture. After reading, the software will automatically read the data of the computer only for you.

The other part of the chip is mainly to provide more professional operation for the chip programmer.

- CPU→MCU: In professional MCU programming, we provide you with more memory types for chip operation, such as EEPROM, DFLASH, PFLASH, etc. Also provides you with the specific pin wiring diagram of the chip, which can meet the wiring read in different situations. As shown below:

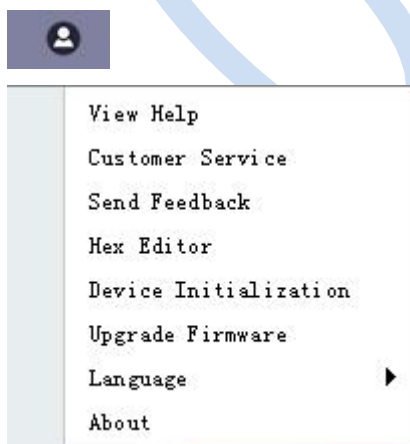


- Memory chip: Most of the memory chips are clip-type adapters. Please operate according to the picture requirements. For example as below picture shown:



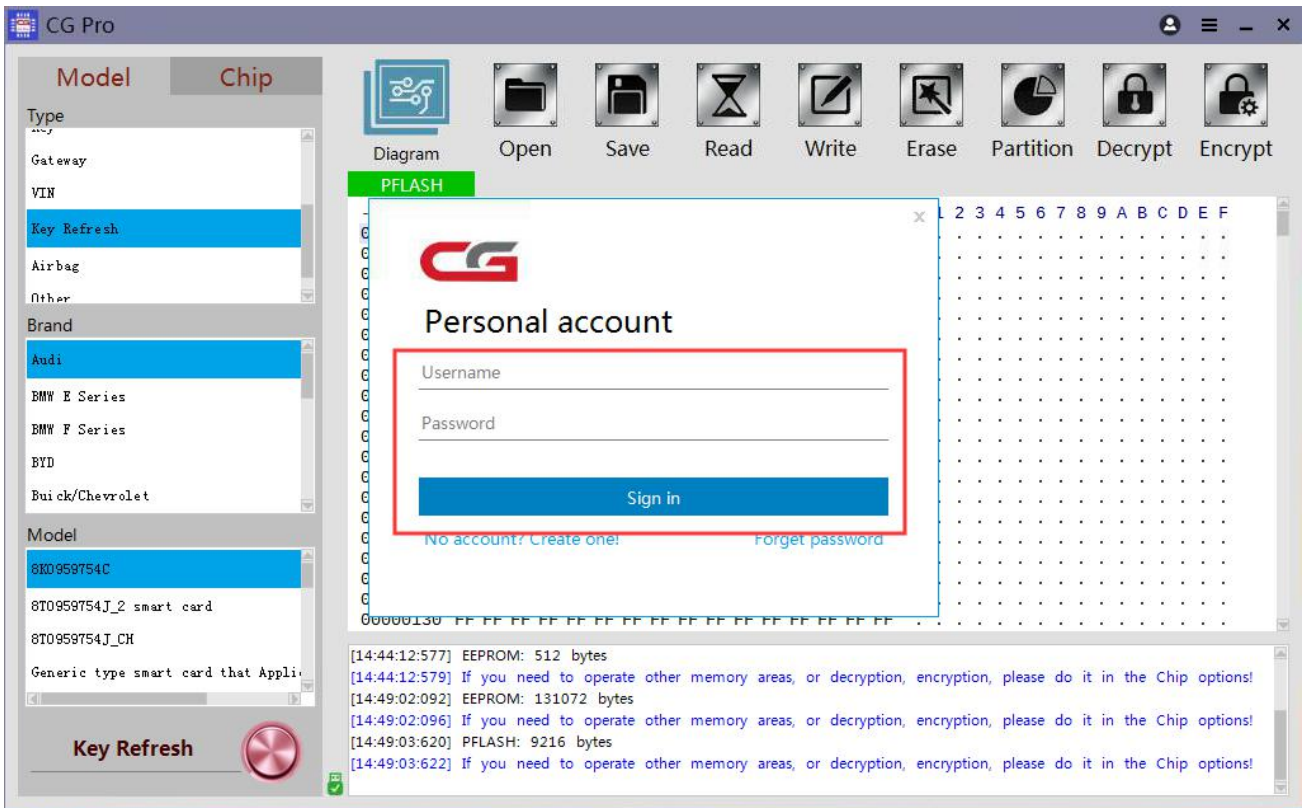


## 4.4 Introduction to the rest of the features

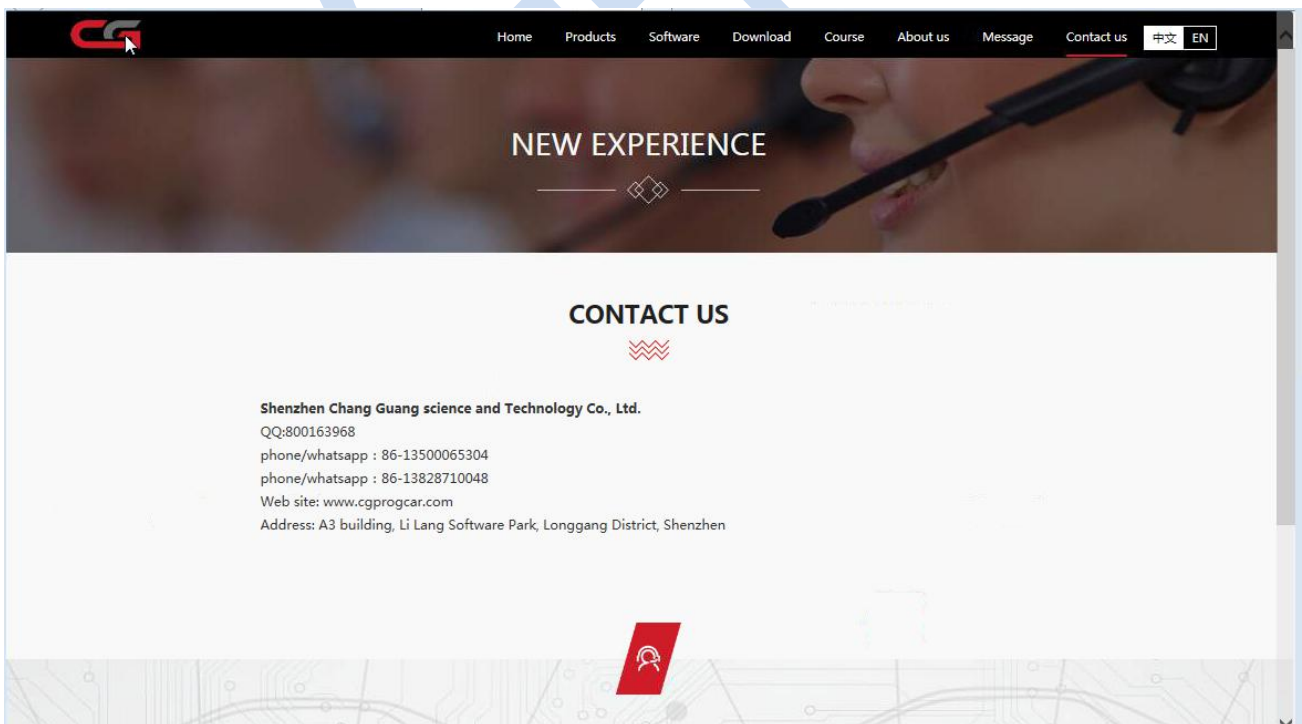


- Register and log in: CGPRO supports user to register and login. After logging in, you

can see the device which you are bound to.



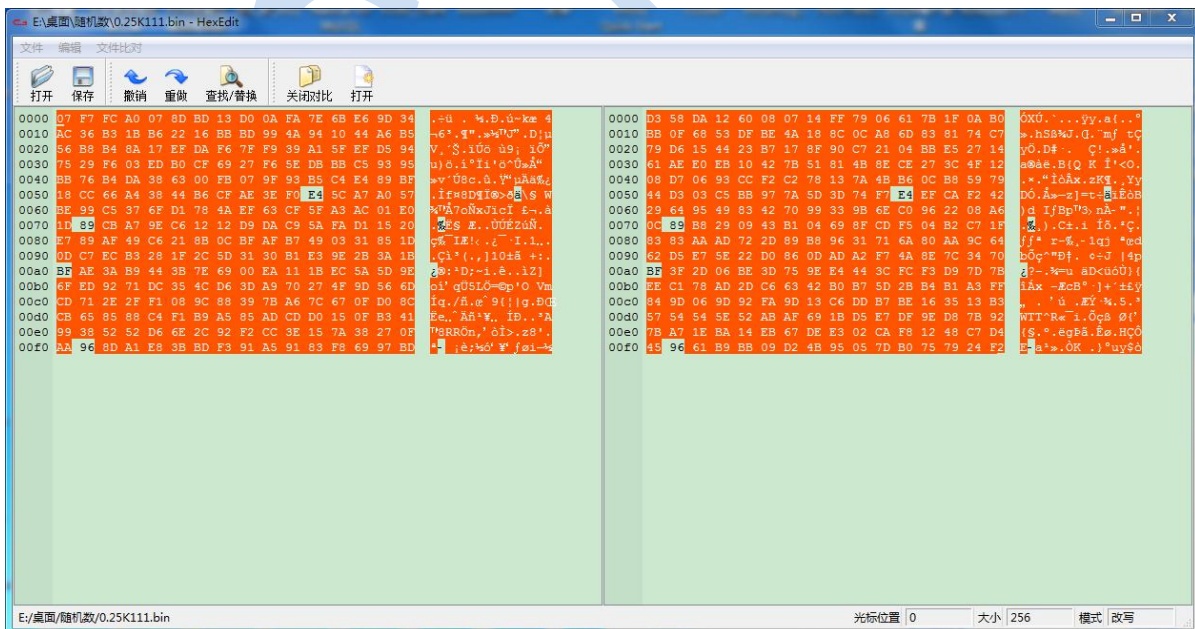
- **Customer Service Center:** After clicking, it will link to the company's website, that you can further understand the company and products. The website also provides the contact information of the company before and after the sale. As shown below:



- Send feedback: Here you can give us feedback for your problems or send us your valuable suggestions.



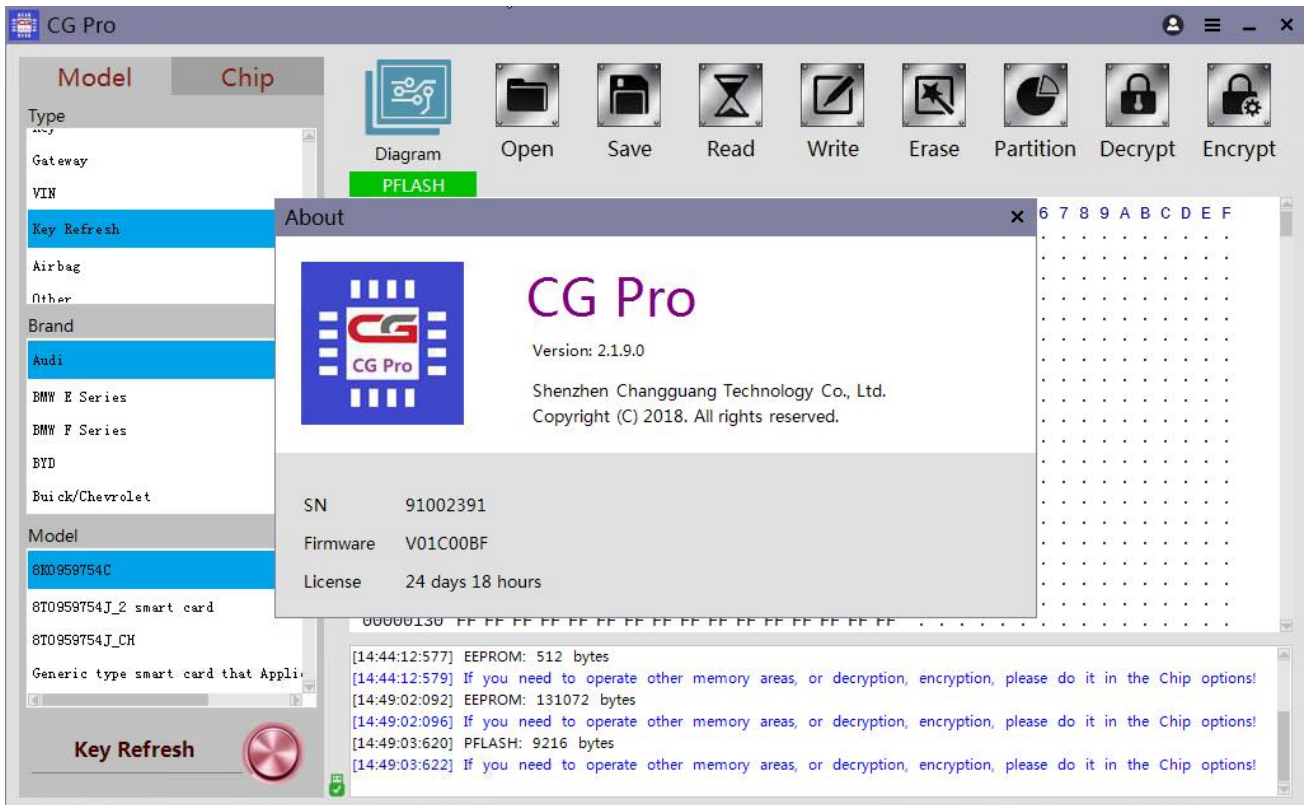
- Hex Editor: This function is an additional hex editor that allows you to compare the data files in this function.



- Device initialization: This function is the initialization of a function, which is not normally used. It is a function for after-sales use, and can only be carried out after the password is entered.

# CG-PRO Users manual

- Upgrade firmware: if you want to upgrade manually but you miss the upgrade prompted by the software, you can upgrade manually here.
- Language: Currently supports Chinese\English\Spanish\French\Turkish. The domestic version only supports Chinese version, and the foreign version of the hardware can be switched here. More languages will be supported later.
- About: Here you can see information about the device, such as SN number, remaining activation days, software version, and so on.



## 4.5 Device activation

CGPRO is activate freely and automatically. When the remaining time of activation of the device is less than 1 day, the software will automatically detect the activation time of the device for one month. Welcome to use it.

CG-PRO

## 5. Model support list

### 5.1 Anti-theft computer

Vendor	Model	Remarks
Mercedes	EIS-164 (ST12)	
	EIS-169 (ST12)	
	EIS-203 (HC08)	
	EIS-209 (ST12)	
	EIS-209 OLD (0K50E)	
	EIS-209 OLD (3K91D)	
	EIS-211 (ST12)	
	EIS-211 OLD (0K50E)	
	EIS-211 OLD (3K91D)	
	EIS-215 (ST12)	
	EIS-220/215 (HC08)	
	EIS-639 (HC08)	
	EIS-639 (ST12)	
	EIS-906 (ST12)	
BMW	CAS1-0K50E	
	CAS1-0K50E (PFLASH Backup)	
	CAS2-0L01Y	
	CAS2-0L01Y (PFLASH Backup)	
	CAS2-2K79X	
	CAS2-2K79X (PFLASH Backup)	

# CG-PRO Users manual

	CAS3-0L15Y	
	CAS3-0L15Y (PFLASH Backup)	
	CAS3-0M23S	
	CAS3-0M23S (PFLASH Backup)	
	CAS4-1L15Y	
	CAS4-1L15Y (PFLASH Backup)	
	CAS4-1N35H	
	CAS4-1N35H (PFLASH Backup)	
	CAS4-5M48H	
	CAS4-5M48H (PFLASH Backup)	
	EWS2-1D47J	
	EWS3-0D46J	
	EWS3-2D47J	
	EWS4-1L86D/2L86D	
	CAS4-5M48H (Convenience)	
	CAS4-1N35H (Convenience)	
	CAS4-5M48H (Convenience PFLASH)	
	CAS4-1N35H (Convenience PFLASH)	
<b>Audi</b>	A4 A5 Q5-BCM (D70F3380)	
	A4 A5 Q5-BCM (D70F3634)	
	A6L Q7 J518-0L01Y	
	A6 Q7 J518-3L40K 4L40K 1L59W	
<b>Porsche</b>	BCM-1L15Y	
	BCM-1L15Y (PFLASH Backup)	
	BCM-1N35H	

# CG-PRO Users manual

	BCM-1N35H (PFLASH Backup)	
	BCM-2M25J	
	BCM-2M25J (PFLASH Backup)	
	BCM-5M48H	
	BCM-5M48H (PFLASH Backup)	
	BCM-1N35H (Convenience)	
	BCM-1N35H (Convenience PFLASH)	
	BCM-5M48H (Convenience)	
	BCM-5M48H (Convenience PFLASH)	
<b>Jaguar Land Rover</b>	BCM-XEP100	
	BCM-XEP768	
	Discovery 3	Maintenance, temporarily removed
	EWS-3L40K 4L40K 1L59W	
<b>Roewe</b>	750-0M89C	
<b>MG</b>	MG-0M89C	
<b>Shanghai Industrial Transportation</b>	Anti-theft box (0L07H 0L59X 0L72A 3K56G) (EEPROM)	
	Anti-theft box (0L07H 0L59X 0L72A 3K56G) (FLASH)	
<b>Buick</b>	Excelle 14 manual transmission BCM (EEPROM)	
	Excelle 14 manual transmission BCM (DFLASH)	
	Excelle 14 manual transmission BCM (Back up PFLASH)	
<b>SiChuan</b>	Mustang T70 IMMOBOX	
<b>Volkswagen</b>	Jetta IMMOBOX	
	KESY IMMOBOX	



## 5.2 Instrument mileage

Vendor	Model	Remarks
<b>Mercedes</b>	EIS-203 (HC08)	Pay attention to the choice of solder chip, see the wiring diagram
	EIS-211 (ST12)	
	EIS-220/215 (HC08)	
	EIS-639 (HC08)	
	EIS-639 (ST12)	
	EIS-906 (ST12)	
<b>BMW</b>	080DQ 方式 1	
	080DQ 方式 2	
	160DQ 方式 1	
	160DQ 方式 2	
	35080VP V6 方式 1	
	35080VP V6 方式 2	
	35080_3 6 方式 1	
	35080_3 6 方式 2	
	35128WT 方式 1	Use a dedicated adapter
	35128WT 方式 2	Use a dedicated adapter
	35160WT 方式 1	Use a dedicated adapter
	35160WT 方式 2	Use a dedicated adapter
	CAS1-0K50E	
	CAS2-0L01Y	

	CAS2-2K79X	
	CAS3-0L15Y	
	CAS3-0M23S	
	CAS4-1L15Y	
	CAS4-1N35H	
	CAS4-1N35H(PFLASH Backup)	
	CAS4-5M48H	
	CAS4-5M48H(PFLASH Backup)	
	EWS3-1L86D/2L86D	
	F Series (3Series)	The algorithm does not support this time.
	CAS4-5M48H(Convenience)	
	CAS4-1N35H(Convenience)	
	CAS4-5M48H(Convenience PFLASH)	
	CAS4-1N35H(Convenience PFLASH)	
<b>Volvo</b>	2012 S60-XC60-S80 (384EEPROM)	
	2012 S60-XC60-S80 (384FLASH)	
	2012 S60-XC60-S80 (512EEPROM)	
	2012 S60-XC60-S80 (512FLASH)	
	2015 XC60-S60 (384EEPROM)	
	2015 XC60-S60 (384FLASH)	
	2015 XC60-S60 (512EEPROM)	
	2015 XC60-S60 (512FLASH)	
	2016 S60-XC60-S80 (384EEPROM)	
	2016 S60-XC60-S80 (384FLASH)	
2016 S60-XC60-S80 (512EEPROM)		

# CG-PRO Users manual

	2016 S60-XC60-S80 (512FLASH)	
	10 Model-XC90 Instrument	
<b>Honda</b>	High fit	
	High fit	
	Gray	
	Binzhi	
	XR-V	
<b>Hyundai</b>	2016 Jiale	
	Sonata 9	
	Sonata 9 V2	
	Acceptable	
<b>Kia</b>	2016 K3	
	2016 K5	
	2017 K2	
	2017 KX	
	New K5	
<b>Suzuki</b>	2017 Jimny	
<b>Changan</b>	Chang'an Star II	
<b>Baojun</b>	730	
<b>Toyota</b>	Runner	
<b>Chery</b>	Tiggo 5	
<b>Ford</b>	Fox 5M5T10849ER	
<b>Chevrolet</b>	Copac-13 Instrument	
<b>Brilliance</b>	China V5-13 Instrument	
<b>SAIC</b>	Datong RV-17 Instrument	

Buick	Excelle Instrument	
Chrysler	300 2005 9S12	
SAAB	93 2008 9S12	

## 5.3 Smart computer

Vendor	Model	Remarks
Jaguar Land Rover	Jaguar-0L01Y	
	RFA-1M12S DFLASH	
	RFA-1M12S EEPROM	
	RFA-1M12S (PFLASH Backup)	
	RFA-2M53J DFLASH	
	RFA-2M53J EEPROM	
	RFA-2M53J (PFLASH Backup)	
	RFA-SPC560B60L3 (DFLASH)	
	RFA-SPC560B60L3 (SHADOW)	
Volvo	S80-0L01Y	
	XC60-0L01Y	

## 5.4 ECU

Vendor	Model	Remarks
Delphi	MT20	
	MT22. 1. 1-2M53J (DFLASH)	
	MT22. 1. 1-2M53J (EEPROM)	
	MT22. 1. 1-2M53J (PFLASH)	

	MT22/MT60 (DFLASH)	
	MT22/MT60 (EEPROM)	
	MT22/MT60 (PFLASH)	
<b>BMW E series</b>	3series or 5series (EEPROM)	
	3series or 5series (outside FLASH)	
	3series or 5series (FLASH)	
	DDE701_EDC17C50 (EEPROM)	
	DDE701_EDC17C50 (FLASH)	
	DDE701_EDC17C50 (PASSWORD)	
	DDE70_EDC17C06 (EEPROM)	
	DDE70_EDC17C06 (FLASH)	
	DDE71_EDC17CP02 (EEPROM)	
	DDE71_EDC17CP02 (FLASH)	
	DDE721_EDC17C41 (EEPROM)	
	DDE721_EDC17C41 (FLASH)	
	DDE731_EDC17C45 (EEPROM)	
	DDE731_EDC17C45 (FLASH)	
	DDE73_EDC17CP09 (EEPROM)	
	DDE73_EDC17CP09 (FLASH)	
	ME1745 (N45) (EEPROM)	
	ME1745 (N45) (FLASH)	
	MEVD17 (N55) (EEPROM)	
	MEVD17 (N55) (FLASH)	
MEVD17 (N55) (PASSWORD)		
MEVD1724 (N20) (EEPROM)		

	MEVD1724 (N20) (FLASH)	
	MEVD1724 (N20) (PASSWORD)	
	MEVD1726 (N55) (EEPROM)	
	MEVD1726 (N55) (FLASH)	
	MEVD1726 (N55) (PASSWORD)	
	MEVD1729 (N20) (EEPROM)	
	MEVD1729 (N20) (FLASH)	
	MEVD1729 (N20) (PASSWORD)	
	MEVD1746 (N46) (EEPROM)	
	MEVD1746 (N46) (FLASH)	
	MVS946 (N46) (EEPROM)	
	MVS946 (N46) (FLASH)	
	X1 (EEPROM)	
	X1 (Ext FLASH)	
	X1 (FLASH)	
<b>BMW F series</b>	B38 MEVD 17. 2. 3 (F20 1793) (EEPROM)	
	B38 MEVD 17. 2. 3 (F20 1793) (FLASH)	
	B38 MEVD 17. 2. 3 (F20 1793) (PASSWORD)	
	B38 MEVD 17. 2. K (F20 1793) (EEPROM)	
	B38 MEVD 17. 2. K (F20 1793) (FLASH)	
	B38 MEVD 17. 2. K (F20 1793) (PASSWORD)	
	DDE701A (EEPROM)	
	DDE701A (FLASH)	
	DDE701P (EEPROM)	
	DDE701P (FLASH)	

	DDE721B (EEPROM)	
	DDE721B (FLASH)	
	DDE731A (EEPROM)	
	DDE731A (FLASH)	
	DDE73A (EEPROM)	
	DDE73A (FLASH)	
	DDE741A (EEPROM)	
	DDE741A (FLASH)	
	DDE751A (EEPROM)	
	DDE751A (FLASH)	
	MEVD1724 (N20) (EEPROM)	
	MEVD1724 (N20) (FLASH)	
	MEVD1724 (N20) (PASSWORD)	
	MEVD1725 (N13) (EEPROM)	
	MEVD1725 (N13) (FLASH)	
	MEVD1726 N55 (X5 X6 5X) (EEPROM)	
	MEVD1726 N55 (X5 X6 5X) (FLASH)	
	MEVD1726 N55 (X5 X6 5X) (PASSWORD)	
	MEVD1728 (S63) (EEPROM)	
	MEVD1728 (S63) (FLASH)	
	MEVD1729 (N20) (EEPROM)	
	MEVD1729 (N20) (FLASH)	
	MEVD1729 (N20) (PASSWORD)	
	MEVD172G (N55) (EEPROM)	
	MEVD172G (N55) (FLASH)	

	MEVD172G (N55) (PASSWORD)	
	MEVD172P (N20) (EEPROM)	
	MEVD172P (N20) (FLASH)	
	MEVD172P (N20) (PASSWORD)	
	MEVD172S (N55) (EEPROM)	
	MEVD172S (N55) (FLASH)	
	MEVD172S (N55) (PASSWORD)	
<b>BMW R series (Mini)</b>	DDE701_EDC17C50 (EEPROM)	
	DDE701_EDC17C50 (FLASH)	
	MED172 (N14/N16) (EEPROM)	
	MED172 (N14/N16) (FLASH)	
	MEV172 (N14/N16) (EEPROM)	
	MEV172 (N14/N16) (FLASH)	
	MEV1722 (EEPROM)	
	MEV1722 (FLASH)	
	MEVD17. 2 SAU (TC1796) (EEPROM)	
	MEVD17. 2 SAU (TC1796) (Ext FLASH)	
	MEVD17. 2 SAU (TC1796) (FLASH)	
	MEVD17. 2 (TC1796) (EEPROM)	
	MEVD17. 2 (TC1796) (Ext FLASH)	
	MEVD17. 2. 2 (TC1797) (EEPROM)	
	MEVD17. 2. 2 (TC1797) (FLASH)	
	MEVD1722 (EEPROM)	
	MEVD1722 (FLASH)	
	MINI (TC1766) (EEPROM)	



# CG-PRO Users manual

	MINI (TC1766) (FLASH)	
	MEVD1727 (EEPROM)	
	MEVD1727 (FLASH)	
<b>Bentley</b>	MEVD17XX (TC1797) (EEPROM)	
	MEVD17XX (TC1797) (FLASH)	
<b>Volkswagen</b>	MEVD17XX (TC1766) (EEPROM)	
	MEVD17XX (TC1766) (FLASH)	
	MEVD17XX (TC1796) (EEPROM)	
	MEVD17XX (TC1796) (Ext FLASH)	
	MEVD17XX (TC1796) (FLASH)	
	MEVD17XX (TC1797) (EEPROM)	
	MEVD17XX (TC1797) (FLASH)	
<b>MT60</b>	Jianghuai B6000246 (EEPROM)	
	Jianghuai B6000246 (FLASH)	
	MT60 (EEPROM)	
	MT60 (FLASH)	
	Sail 28086804 (EEPROM)	
	Sail 28086804 (FLASH)	
<b>MT80</b>	28147667 (EEPROM)	
	28147667 (FLASH)	
	28180087 (EEPROM)	
	28180087 (FLASH)	
	28209396 (EEPROM)	
	28209396 (FLASH)	
	28232660 (EEPROM)	

# CG-PRO Users manual

	28232660 (FLASH)	
	3095167 (EEPROM)	
	3095167 (FLASH)	
	9015432 (EEPROM)	
	9015432 (FLASH)	
	9025068 (EEPROM)	
	9025068 (FLASH)	
	B6000396 (EEPROM)	
	B6000396 (FLASH)	
	England 1 (EEPROM)	
	England 1 (FLASH)	
	England 2 (EEPROM)	
	England 2 (FLASH)	
	Excelle 9025069 (EEPROM)	
	Excelle 9025069 (FLASH)	
	Lefeng 9015423 (EEPROM)	
	Lefeng9015423 (FLASH)	
	Lefeng Auto (EEPROM)	
	Lefeng Auto (FLASH)	
	MT80 (EEPROM)	
	MT80 (FLASH)	

## 5.5 Key matching

Vendor	Model	Remarks
BMW	CAS1-0K50E	CAS1 Key
	CAS2-0L01Y	CAS2 Key
	CAS2-2K79X	CAS2 Key
	CAS3-0L15Y	CAS3 Key
	CAS3-0M23S	CAS3 Key
	CAS4-1L15Y	CAS4 Key
	CAS4-1N35H	CAS4 Key
	CAS4-1N35H(PFLASH Backup)	
	CAS4-5M48H	CAS4 Key
	CAS4-5M48H(PFLASH Backup)	
	EWS1	
	EWS2	
	EWS3	
	EWS4	
	CAS4-5M48H(Convenience)	
	CAS4-1N35H(Convenience)	
	CAS4-5M48H(Convenience PFLASH)	
	CAS4-1N35H(Convenience PFLASH)	
	Audi	Audi A2 VDO 1999 93C86
Audi A3 VDO 1999 93C66 86		
Audi A4 VDO 1999 93C66 86		
Audi A6 VDO 1998 93C66 86		
Audi A8 VDO 1999 24C16 17		

# CG-PRO Users manual

	Audi A3 MagnetiMarelli 1998 HC912	
	Audi A4 MagnetiMarelli 1998 HC912	
	Audi A6 MagnetiMarelli 1998	
	Audi TT MagnetiMarelli 1998 HC912	
	Audi ImmoBox 4B0 953 234 93C56	
	Audi A4 UKNSI 1998 24C04	
<b>Porsche</b>	BCM-1N35H	XEP100 16/32K Data
	BCM-2M25J	XET256 16/32K Data
	BCM-5M48H	XEP100 16/32K Data
	BCM-1L15Y	XDP512 4K Data
<b>Jaguar Land Rover</b>	3L40K	
	KVM-XET256 XEQ384	
	600_68HC05	
	618_68HC05	
	620_68HC05	
	75_68HC11	
	800_68HC05	
	Discovery 3	
	Jaguar 2001_MC68HC11_ID73	
	Jaguar S-Type_MC68HC11	
	Jaguar S-Type MC68HC912	
	Jaguar X-Type MC68HC912	
	KVM-XEP100 (BCM)	
	KVM-XET256 XEQ384 (DFLASH)	
KVM-XET256 XEQ384 (EEPROM)		

<b>Volvo</b>	40_93C46	
	40_93C56	
	40_93C66	
	70_93C56	
	70_93C66	
	850_93C46	
	940_93C46	
	Trucks_FH12_93C66	
	Trucks_FH250_93C66	
	Volvo V40 2004 9S12 Meg48	
	Volvo V50 2004 9S12 Meg48	
	Volvo S60 2003 28F400 Meg48	
	Volvo V70 2003 28F400 Meg48	
	Volvo S80 2003 28F400 Meg48	
	Volvo XC70 2003 28F400 Meg48	
Volvo XC90 2003 28F400 Meg48		
<b>Honda</b>	Accord_1999_68HC05	
	Civic_1997_68HC05	
	Civic_2001_68HC05	
	Honda Cars Accord 2005 93C46	
	Honda Cars City 2002 93C46	
	Honda Cars Civic 2002 93C46	
	Honda Cars CR-V 1999 93C46	
	Honda Cars Jazz 2003 93C46	
Honda Cars Steam 2006 93C46		

## CG-PRO Users manual

	Honda Cars CR-V 1998 MC68HC805P18	
	Honda Cars Civic 2006 24C04	
	Honda Cars Accord 2002 24C04	
	Honda Cars CR-V 2004 24C04	
	Honda Cars Element 2004 24C04	
	Honda Cars Fit 2002 24C04	
	Honda Cars Pilot 2002 24C04	
	Honda Cars Pilot 2002 24C04	
<b>Hyundai</b>	Hyundai Accent 2004 93C56	
	Hyundai Coupe 2005 93C66	
	Hyundai Elantra 2005 93C66	
	Hyundai H1 2001 93C56	
	Hyundai H200 2001 93C56	
	Hyundai SantaFe 2006 93C56	
	Hyundai Sonata 2003 93C56	
	Hyundai Starex 2002 93C56	
	Hyundai Terracan 2001 93C56	
	Hyundai Trajet 2000 93C56	
	Hyundai SantaFe 2005 93C66	
	Hyundai Sonata 2005 93C66	
	Hyundai Tiburon 2005 93C66	
	Hyundai Tucson 2005 93C66	
	Hyundai Tuscani 2005 93C66	
	Hyundai Accent 2004 95040 95160 95320	
	Hyundai Atos Prime 2003 95040 95160	

## CG-PRO Users manual

	Hyundai Elantra 2004 95040 95160	
	Hyundai Elantra 2010 95320	
	Hyundai Era 2008 95040 95160	
	Hyundai Getz 2007 95040 95160 95320	
	Hyundai i30 2008 95320	
	Hyundai SantaFe 2009 95320	
	Hyundai Sonata 2008 95040 95160	
	Hyundai Verna 2007 95040 95160	
	Hyundai Coupe 2002 68HC908	
	Hyundai H1 2001 95P08	
	Hyundai SantaFe 2002 95P08	
	Hyundai Starex 2001 95P08	
	Hyundai i10 2010 95160	
	Hyundai i30 2009 95160	
	Hyundai i30 2012 TC1762	
	Hyundai Solaris 2012 TC1762	
	Hyundai Sonata 2006 29BDD160 HITAG	
	Hyundai Sonata 2008 MPC5XX	
	Hyundai Terracan 2003 95080	
<b>KIA</b>	KIA Carnival 2002 93C56	
	KIA Magentis 2001 93C56	
	KIA Rio 2001 93C46	
	KIA Sorento 2003 93C56	
	KIA Sephia 1999 93C46	
	KIA Sportage 2001 93C46	

## CG-PRO Users manual

	KIA Carnival 2000 93C46	
	KIA Clarus 93C46	
	KIA Sedona 1999 93C46	
	KIA Shuma 2000 93C46	
	KIA Sportage 1999 93C46	
	KIA Cerato 2003 95040 95160	
	KIA Sorento 2007 95320	
	KIA Spectra 2005 95040 160	
	KIA Cee' d 2008 95320	
	KIA Carens 2001 95P08	
	KIA Cee' d 2005 95160	
	KIA Cee' d 2012 TC1762	
	KIA Sportage 2008 MPC5X	
	KIA Bongo 3 2003 95080	
	KIA Soul 2008 TC1766	
Suzuki	Suzuki Alto 2002 24C01 4D	
	Suzuki Ignis 2000 24C01 4D	
	Suzuki Jimny 2003 24C01 4D	
	Suzuki Motorcycles 32920-01H10 93C66	
	Suzuki Motorcycles 32920-02H00 93C66	
	Suzuki Motorcycles 32920-21H50 93C66	
	Suzuki Motorcycles 32920-44GX0 93C66	
	Suzuki Motorcycles 32920-15H00 93C66	
	Suzuki Motorcycles 32920-15H30 93C66	



## CG-PRO Users manual

	Suzuki Motorcycles 32920-23H00 93C66	
	Suzuki Motorcycles 32920-37Hx0 93C66	
	Suzuki Motorcycles 32920-38Hx0 93C66	
	Suzuki Motorcycles 32920-47H00 93C66	
	Suzuki Motorcycles 32920-41G50 93C66	
	Suzuki Alto 2006 93C56 HIAG	
	Suzuki Alto 2009 93C86 HIAG	
	Suzuki Grand Vitara 2006 93C56 HITAG	
	Suzuki Swift 2006 93C56 HIAG	
	Suzuki SX4 2006 93C56 HIAG	
	Suzuki Grand Vitara 2003 24C01 HITAG	
	Suzuki Splash 2009 93C66	
	Suzuki SX4 2012 TC172 HIAG	
<b>Volkswagen</b>	Fox 2005 9S12	
	Polo MagnetiMarelli 2006 9S12	
	Golf IV 1999 VDO 93C86	
	Jetta 2008 for Mexico 93C86	
	Passat DashboardVDO 1999 93C86	
	Beetle 1998 HC912	
	Fox 2008 93C56	
	Gol ImmoBox 93C56	
	Pointer ImmoBox 2004 93C56	
	Santana 2006 93C56	
ImmoBox bypartNo 377953257A 93C56		

## CG-PRO Users manual

	Golf IV 1998 MotoMeter 93C56	
	T5 VDO 2003 93C86	
	Golf IV 1998 VDO 93C66	
	Golf IV 2002 BOSCH RB8 24C08	
	Passat DashboardVDO 1997 93C66 ID48	
<b>ChangAn</b>	Chang' an benben 95040	
<b>Bentley</b>	Arnage_1998_24C04	
<b>Fiat</b>	Coupe_1996_93C46	
	Croma_1996_93C46	
	Panda_2002_9S12	
	Sedici_2006_93C56	
<b>Mitsubishi</b>	Carisma_2000_93C56	
	Mitsubishi Fuso Canter 2009 93C66 4D	
	Mitsubishi Montero 2000 68HC805	
	Mitsubishi Pajero 2000 68HC805	
	Mitsubishi Pajero Sport 2000 68HC805	
	Mitsubishi Space Wagon 1999 68HC805	
	Mitsubishi Star_1999_93C56	
	Mitsubishi ASX 2010 24C16	
	Mitsubishi Lancer 2008 24C16	
	Mitsubishi Lancer X 2009 24C16	
	Mitsubishi Outlander 2006 24C16	
	Mitsubishi Colt 2004 9S12	
	Mitsubishi Galant 2004 24C01	

## CG-PRO Users manual

	Mitsubishi Grandis 2003 24C01	
	Mitsubishi Pajero IV 24C01	
	Mitsubishi Grandis 2006 24C02	
	Mitsubishi L200 2006 24C02	
	Mitsubishi Montero 2007 24C02	
	Mitsubishi Nativa 2008 24C02	
	Mitsubishi Pajero Sport 2007 24C02	
	Mitsubishi Lancer 2004 24C01	
	Mitsubishi Outlander 2004 24C01	
	Mitsubishi L200 2010 25320	
	Mitsubishi Mirage 2010 25320	
	Mitsubishi Raider 2005 9S12	
<b>Alfa Romeo</b>	145_93C46	
	146_93C46	
	155_93C46	
	156_93C46	
	164_93C46	
	166_1998_93C56	
	GTV_93C46	
	Spider_93C46	
<b>Citroen</b>	Berlingo_1998_93C46	
	Elysee_2002_93C46	
	Citroen Xantia 1999 93C66 ID48	
	Citroen Xantia 2001 95040	
	Citroen Berlingo 2000 NEC	

# CG-PRO Users manual

	Citroen Xsara 2000 NEC	
	Citroen DS3 2009 24C128	
<b>Ford</b>	Galaxy_1995_2003_Diesel_24C04	
	Galaxy_1995_2003_Gasoline_77014	
	Ford Edge_2007- (93C66, 4D)	
	Ford Escape_2001 (77014)	
	Ford Explorer_2004-(77014)	
	Ford Fiesta_93C56	
	Ford Fiesta_95P04	
	Ford Fiesta_2007(95160)	
	Ford Fiesta_2009(9S12)	
	Ford Focus_1998_95P04_DST40	
	Ford Focus_1998_77012_DST40	
	Ford Focus_1998_77014_DST40	
	Ford Focus_2007_93C56_DST40	
	Ford F_series_100_93C56	
	Ford Fusion_2007_93C56	
	Ford Fusion_2007(95160)	
	Ford Maverick_77014	
	Ford Mondeo_2000_77014	
	Ford Mondeo_2001_95P04	
	Ford Mondeo_2001_77014	
Ford Ranger_93C56		
Ford Taurus_2000_77014		
Ford Transit_2000_95P04		

## CG-PRO Users manual

	Ford Transit_2000_77014	
	Ford Transit_2003_77014	
	Ford Transit Connect_95P04	
	Ford Fiesta 2002...2008	
	Ford Fusion 2002 93C86	
	Ford Explorer 2007 93C86	
<b>Iveco</b>	Daily_1996_93C46	
<b>Lancia</b>	K_93C46	
<b>Toyota</b>	Corolla 93C56 lose	
<b>Peugeot</b>	106_93C46	
	206_1998_HC05	
	406_1997_93C46_ID33	
	Partner_1997_93C46	
	Peugeot Cars 607 2001 93C66 MEG48	
	Peugeot Cars Partner 2000 NEC	
	Peugeot Cars 206 2001 95160 HIAG	
	Peugeot Cars Partner 2002 95160 HITAG	
	Peugeot Cars 4007 2008 24C16	
<b>Seat</b>	Immobox_NO. 6X0_953_257_24C04	
	Cordoba MagnetiMarelli 2004 9S12	
	Ibiza MagnetiMarelli 2006 9S12	
	Leon MagnetiMarelli 2004 9S12	
	Ibiza VDO 2000 93C66	
	Toledo 1999 VOD 93C86	
<b>Kawasaki</b>	Kawasaki Mitsubishi 21175-0079 24C04	

## CG-PRO Users manual

	Kawasaki Mitsubishi 21175-0158 24C04	
	Kawasaki Denso 21175-0046 93C66	
	Kawasaki Denso 21175-0053 93C66	
	Kawasaki Denso 21175-0097 93C66	
	Kawasaki Denso 21175-0098 93C66	
	Kawasaki Denso 21175-0109 93C66	
	Kawasaki Denso 21175-0170 93C66	
	Kawasaki Denso 21175-0173 93C66	
	Kawasaki Denso 21175-0227 93C66	
	Kawasaki Denso 21175-0220 93C66	
	Kawasaki Denso 21175-0272 93C66	
	Kawasaki Denso 21175-0341 93C66	
	Kawasaki Denso 21175-0363 93C66	
	Kawasaki Denso 21175-0356 93C66	
	Kawasaki Denso 21175-0789 93C86	
	Kawasaki Denso 21175-0811 93C86	
	Kawasaki Mitsubishi 21175-0017 24C02	
<b>AstonMartin</b>	Aston Martin DB9 _2004_77014	
<b>KTM</b>	KTM 690 990 1190 9S12 DST40	
<b>LDV</b>	LDV Convoy 2000 95P04	
<b>Renault</b>	Renault Avantime 2001 HC912	
	Renault Megane 2000 68HC705 4D 4E	
	Renault Clio Sport 2009 9S12	Maintenance, temporarily removed
	Renault Megane 2003 9S12 Hitag	Maintenance, temporarily removed

# CG-PRO Users manual

	Renault Scala 2010 93C66	Maintenance, temporarily removed
<b>Chevrolet</b>	Chevrolet Epica 2003 68HC705	
	Chevrolet Evanda 2003 68HC705	
	Chevrolet Lacetti 2005 ST7	
	Chevrolet Aveo 2006 93C56	
	Chevrolet Kalos 2006 93C56	
	Chevrolet Matiz 2006 93C56	
	Chevrolet Spark 2008 93C56 48	
	Chevrolet Tacuma 93C56	
	Chevrolet Camaro 2015 24C32	
	Chevrolet Cruze 2008 24C16	
	Chevrolet Equinox 2011 24C16 HIAG	
	Chevrolet Aveo 2009 93C76	
	Chevrolet Captiva 2011 9S08 HIAG	
	Chevrolet Silverado 2011 9S08 HIAG	
<b>Lincoln</b>	Lincoln LS 2000 MC68HC11	
<b>Daewoo</b>	Daewoo Lacetti 2006 ST7	
	Daewoo Kalos 2002 93C56	
	Daewoo Lanos 2002 93C56	
	Daewoo Leganza 2000 93C56	
	Daewoo Matiz 2001 93C56	
	Daewoo Nubira 2000 93C56	
<b>FAW Group</b>	FAW Group Besturn B50 95040	
	FAW Group Besturn B70 95040	
<b>Infiniti</b>	Infiniti Q45 2001 S29190	

# CG-PRO Users manual

<b>Isuzu</b>	Isuzu KB250D 93C66 4D	
	Isuzu D-Max 2010 93C66	
	Isuzu Forward FRR 2007 93C66	
	Isuzu Forward FTR 2009 93C66	
	Isuzu NPR 2007 93C56	
<b>Mazda</b>	Mazda 2 2003 93C56	
	Mazda 2 2009 9S12 [DST]	
	Mazda 2 2009 93C66	
	Mazda 3 Dashboard 93C56	
	Mazda 3 Dashboard 93C66	
	Mazda 5 93C56	
	Mazda 6 93C56, 66. 24C02	
	Mazda 6 2005 93C86	
	Mazda B3000 ECU 2001 95040	
	Mazda CX-7 93C66, 24C04 ID63	
	Mazda CX-7 93C66, 24C04 ID63	
	Mazda Demio 2009 9S12 [dst]	
	Mazda RX-8 24C02	
	Mazda Tribute Dashboard 2008 9S12	
	MazdaTribute ECU 2004 93C56	
MazdaTribute ECU 2006 95040		
<b>Nissan</b>	Nissan NATS-5	
<b>Scania</b>	Scania R470	
<b>SsangYong</b>	SsangYong Actyon Diesel MSP430	
	SsangYong kyron Diesel MSP430	



# CG-PRO Users manual

	SsangYong Rexton Diesel MSP430	
	SsangYong Actyon Gasoline 29Fxxx	
	SsangYong korando Gasoline 29Fxxx	
	SsangYong Musso Gasoline 29Fxxx	
	SsangYong Musso 2001 MC68HC05	
	SsangYong Rexton Gasoline 29Fxxx	
<b>Subaru</b>	Subaru Forester 2004 24C01	
	Subaru Impreza 2004 24C01	
	Subaru Legacy 2005 24C01	
	Subaru Tribeca 2005 24C01	
<b>Yamaha</b>	Yamaha Immo Moric S29190	
<b>Brilliance</b>	Brilliance M2 93C66	
	Brilliance Zhonghua FRV 24C01	
	Brilliance Zhonghua FSV 93C56	
<b>Great Wall</b>	Great Wall- Haval (Hover) H3 H5-93C66	
<b>TagAZ</b>	TagAZ Road Partner 29Fxxx	
<b>DAF</b>	DAF 2002	
<b>Maserati</b>	Maserati Quattroporte 2004 HC912	
<b>Skoda</b>	Skoda Fabia 2000 93C86	
	Skoda Octavia 2001 93C86	
<b>Pontiac</b>	Pontiac G3 (93C56)	
	Pontiac G3 (93C76)	Maintenance, temporarily removed
<b>Acura</b>	Acura CSX 2008 24C04	
	Acura MDX 2008 24C04	
	Acura RDX 2008 24C04	

## *CG-PRO Users manual*

	Acura TL 2008 24C04	
	Acura TSX 2008 24C04	
<b>Opel</b>	Opel Agila 2008 93C66	
	Opel Astra J 2008 25160	
	Opel Mokka 2008 24C16 HITAG	
<b>Cadillac</b>	Cadillac ATS 2012 95320 HIA	
<b>Roewe</b>	Roewe 750 2007 9S12	
<b>SAIC</b>	SAIC MG3 2011 24C16	
<b>Tata</b>	Tata Indica 2008 24C04	
	Tata Indigo 2008 24C04	
<b>VAZ</b>	VAZ Priora 2013 95040	
<b>UAZ</b>	UAZ Hunter 2010 TC1762	
<b>Smart Forfour</b>	Smart Forfour 2004 9S12	
<b>Chrysler</b>	Chrysler 300C 2005 9S12	
	Chrysler Aspen 2005 9S12	
	Chrysler 300C 2008 93C86	
	Chrysler Voyager 2008 93C86	
<b>Dodge</b>	Dodge Dakota 2005 9S12	
	Dodge Durango 2005 9S12	
	Dodge Journey 2009 93C86	
<b>Jeep</b>	Jeep Commander 2006 9S12	
	Jeep Grand Cherokee 2005 9S12	
	Jeep Commander 2007 93C86	
	Jeep Grand Cherokee 2008 93C86	
	Jeep Liberty 2004 95080	

## 5.6 Gateway computer

Vendor	Model	Remarks
Mercedes	204/212-1L15Y	
	204/212-1L15Y (FLASH)	Loadable CGMB production special data
	204/212-3M25J	
	204/212-3M25J (FLASH)	Loadable CGMB production special data

## 5.7 VIN

Vendor	Model	Remarks
BMW	CAS1 - CAS4	Load data identification, modify the VIN

## 5.8 Key Refresh

Vendor	Model	Remarks
Audi	8K0959754C	
	8T0959754J_2 smart card	
	8T0959754J_CH	

# CG-PRO Users manual

	Generic type smart card that Applicable to all 5 generations	
	PCB1 8T0959754 433 remote control	
	PCB1 8T0959754A 315 remote control	
	PCB1 8T0959754D 868 remote control	
	PCB1 8T0959754F 433 smart card	
	PCB2 8T0959754 433 remote control	
	PCB2 8T0959754D 868 remote control	
	PCB2 8T0959754F 433 smart card	
	PCB2 8T0959754G 315smart card	
	PCB2 4H0959754G 315 smart card	
	PCB2 4H0959754K 868 smart card	
	PCB2 4G0959754G 315 smart card	
	PCB2 4G0959754K 868 smart card	
	PCB3 4H0959754DA 433 smart card	
	PCB3 4H0959754DB 315 smart card	
	PCB3 4H0959754DD 868 smart card	
<b>Porsche</b>	7PP959753AJ 434MHZ	
	7PP959753BM 315MHZ	
	7PP959753BN 434MHZ	
	7PP959753BQ 315MHZ	
	7PP959753BS 434MHZ	
<b>Volvo</b>	5WK49269 (433MHZ) smart card	
	5WK49266 (900MHZ) smart card	
<b>BMW E Series</b>	5WK49125 E series 868MHZ remote control	
	5WK49127 E series 315MHZ remote control	

# CG-PRO Users manual

	5WK49145 E series 868MHZ smart card	
	5WK49147 E series 315MHZ smart card	
<b>BMW F Series</b>	5WK49661 F series 868MHZ Continental	
	5WK49663 F series 315MHZ Continental	
	5WK49662 F series 434MHZ Continental	
	HUF5661 F series 868MHZ Huf	
	HUF5662 F series 315MHZ Huf	
	HUF5663 F series 434MHZ Huf	
	HUF5667 F series 434MHZ Huf	
	Huf-F series 868 frequency	
	Huf-F series 434 frequency	
<b>Mitsubishi</b>	GBD-644M-KEY (433MHZ)	
<b>Peugeot</b>	21676652	
	E28CI01B	
	E25CI009	
	E33CI002	
<b>Renault</b>	285970036R (Hitag2-433MHZ)	
	285975779R smart card 433MHZ	
	285979045R smart card 433MHZ	
	285974100 remote control (Hitag-AES 433MHZ)	
	285971998R smart card (Hitag-AES 433MHZ)	
<b>Mazda</b>	JX331BB1002A 2 key smart card	
	JX331BB1002A 3 key smart card	
<b>Nissan</b>	315MHZ Hitag2 smart card-A2C53188764	

# CG-PRO Users manual

	315MHZ Hitagsmart card-A2C53297341	
	433MHZ Hitag3smart card-A2C53405173	
	Hitag2 smart card FCCID-CWTWB1U825 2 key	
	AES smart card-A232801600-c24 3 key 433MHZ	
	AES smart card-A2C32801600-E12 4 key 433MHZ	
	AES smart card-A232800800 5 key 433MHZ	
<b>Great Wall</b>	H2 smart 434MHZ PCB: CU1897L	
<b>Chrysler &amp; Jeep &amp; Dodge</b>	GQ4-54T AES Prox	
	IYZ-C01Csmart card	
	IYZ-C01C M3N5W783X Chip screen printing: 567.738.031	
	KOBOT04A	
	M3M Chip screen printing: F7953MC	
	M3M Hitag2	
	M3N5WY72XX	
	M3N5WY783X	
	M3N3322971XX	
	OHT692427AA (2005)	
OHT692713AA		
<b>BYD</b>	K2TA4-30A smart card	
	K2TA3-74B smart card black	
	K2TA3-76E smart card	
	K2TA3-H7J smart caed white oval	
	K2TD3-A0C smart card white	
	K2TD smart card white	

<b>Buick &amp; Chevrolet</b>	3 key intelligence 433MHZ F7952E	
	4 key intelligence 315MHZ F7952E	
	4 key intelligence 433MHZ F7952E	
	5 key intelligence 315MHZ F7952E	
	5 key intelligence 433MHZ F7952E	
<b>Hyundai &amp; KIA</b>	MP13A_15	
	MP13L-12	
	SVI_DMFGE04	
	SVI_DMFNA04	
	SVI_MDFGE03	
	SVI_CMFCH02	
	SVI_CMFEU03	
	SVI_HMFEU04	
	SVI_HMFKR04	
	SVI_HMFNA04	
<b>Land Rover</b>	YWX000071 (315MHZ) Visteon	
	YWX000061 (434MHZ) Visteon	
	5E0U40247 (434MHZ)	

## 5.9 Airbag

Vendor	Model	Remarks
Volvo	XC90 (P31451730) (EEPROM)	
	XC90 (P31451730) (FLASH)	

<b>Baojun</b>	560 (23945367) (EEPROM)	
	560 (23945367) (FLASH)	
<b>Haima</b>	S5 (SA12-57-K30) (EEPROM)	
	S5 (SA12-57-K30) (FLASH)	
<b>Buick</b>	Regal 10 Year (13578320TB) (EEPROM)	
	Regal 10 Year (13578320TB) (PFLASH Backup)	
<b>KIA</b>	SPORTAGE (95910-03100) (EEPROM)	
	SPORTAGE (95910-03100) (PFLASH Backup)	

## 5.10 Others

<b>Vendor</b>	<b>Model</b>	<b>Remarks</b>
<b>Mercedes</b>	ELV W203	
	ELV W211	
	S350Left rear door module	
	V260_Steering column	
	W221 LU	
<b>BMW</b>	F series SZL module	
	FRM computer (E series)	
	FRM computer (F series)	
<b>Audi</b>	ESL-4L35K(Lockless version)	
<b>Volkswagen</b>	Golf 6 radar module	
<b>Buick</b>	Lu Zun BCM	



	Regal 10 - airbag computer	
	Regal 10 - airbag computer (Backup PFLASH)	
<b>Shanghai Huaying</b>	Shanghai Huaying BCM	
<b>Nissan</b>	Scorpio-BCM-3M25J (EEPROM)	
	Scorpio-BCM-3M25J (DFLASH)	
	Scorpio-BCM-3M25J (BackupPFLASH)	
	Scorpio-BCM-1L15Y (EEPROM)	
	Scorpio-BCM-1L15Y (Backup PFLASH)	
<b>Kia</b>	Lion running airbag computer (EEPROM)	
	Lion running airbag computer (Backup PFLASH)	

## 6. Chip support list

### 6.1 CPU→MCU

Vendor	Model	Remarks
Renesas	D70F3231	8 pins/V850 Adaptor

# CG-PRO Users manual

- V850	D70F3232
	D70F3233
	D70F3234
	D70F3235
	D70F3236
	D70F3237
	D70F3238
	D70F3239
	D70F3333
	D70F3334
	D70F3335
	D70F3336
	D70F3340
	D70F3341
	D70F3342
	D70F3343
	D70F3344
	D70F3345
	D70F3346
	D70F3347
	D70F3348
	D70F3350
	D70F3351
D70F3352	
D70F3353	

D70F3354
D70F3355
D70F3356
D70F3357
D70F3358
D70F3364
D70F3365
D70F3366
D70F3367
D70F3368
D70F3370A
D70F3371
D70F3372
D70F3373
D70F3374
D70F3375
D70F3376A
D70F3377A
D70F3378
D70F3379
D70F3380
D70F3381
D70F3382
D70F3383
D70F3384

D70F3385
D70F3402
D70F3403
D70F3416
D70F3417
D70F3421
D70F3422
D70F3423
D70F3424
D70F3425
D70F3426
D70F3427
D70F3433
D70F3469
D70F3522
D70F3523
D70F3524
D70F3525
D70F3526
D70F3548
D70F3549
D70F3550
D70F3551
D70F3552
D70F3553

D70F3554
D70F3555
D70F3557
D70F3558
D70F3559
D70F3560
D70F3585
D70F3611
D70F3612
D70F3613
D70F3614
D70F3615
D70F3616
D70F3617
D70F3618
D70F3619
D70F3620
D70F3621
D70F3622
D70F3623
D70F3628
D70F3634
D70F4000
D70F4001
D70F4002

# CG-PRO Users manual

	D70F4003	
	D70F4003	
	D70F4005	
	D70F4006	
	D70F4007	
	D70F4008	
	D70F4009	
	D70F4010	
	D70F4011	
	D70F4012	
<b>Motorola</b> - <b>9S12</b>	9S12C128	DB25 Cable
	9S12C32	
	9S12C64	
	9S12C96	
	9S12D32	
	9S12DJ512	
	9S12DT512	
	9S12DP512	
	9S12D64-2L86D	
	9S12DG128-3L40K	
	9S12DG256-2K79X	
	9S12DJ-0M89C	
	9S12DT128-1L59W	
	9S12DT128-1L85D	
9S12DT128-4L40K		

9S12DT256-0L01Y
9S12G128
9S12G192
9S12G240
9S12G48
9S12G64
9S12G96
9S12GA128
9S12GA192
9S12GA240
9S12GA48
9S12GA64
9S12GA96
9S12GC128
9S12GC16
9S12GC32
9S12GC64
9S12GC96
9S12GN16
9S12GN32
9S12GN48
9S12GNA16
9S12GNA32
9S12H128
9S12H256

9S12HA32-0M34S
9S12HA48-0M34S
9S12HA64-0M34S
9S12HY32-0M34S
9S12HY48-0M34S
9S12HY64-0M34S
9S12HZ128-3L16Y
9S12HZ256-3L16Y
9S12KGKT128
9S12KGKT256
9S12XD64
9S12XD128
9S12XDG128
9S12XD256
9S12XDQ256
9S12XDT256
9S12XDG256
9S12XDT384
9S12XDP512-0L15Y
9S12XDP512-0M23S
9S12XDP512-1L15Y
9S12XEG384-3M25J
9S12XEP100-1N35H
9S12XEP100-5M48H
9S12XEP768-1N35H



# CG-PRO Users manual

	9S12XEP768-4M48H	
	9S12XEQ384-1M12S	
	9S12XET256-2M53J	
	9S12XET512-2M25J	
	9S12XF256-1M64J	
	9S12XHY128-0M23Y	
	9S12XHY256-0M23Y	
	9S12XHZ384-1M80F	
	9S12XHZ512-1M80F	
	9S12XS64	
	9S12XS128	
	9S12XS256	
	9S12XEP100-5M48H(免拆)	
	9S12XEP100-1N35H(免拆)	
<b>Motorola</b> - <b>HC(7)05</b>	HC705-0D40J	
	HC705-0D53J	
	HC705-0D59J	
	HC705-0D69J	
	HC705-0G47V	
	HC705-1D59J	
	HC705-1D69J	
	HC705-1H52A	
	HC705-2D59J	
<b>Motorola</b> - <b>HC(7)11</b>	HC711EA9-0D46J	HC711Adaptor
	HC711EA9-1D47J	

# CG-PRO Users manual

	HC711EA9-2D47J		
<b>Motorola</b> - <b>HC (9) 08</b>	HC908AB32	DB25 Cable OR CG-PRO expanding board +HC705/908 Adaptor	
	HC908ABAZ32A		
	HC908AZ60-1J35D		
	HC908AZ60-4J74Y		
	HC908AS60-3J74Y		
	HC908AS60A-3K85K		
	HC908AZ60-1L31V		
	HC908AZ60-2J74Y		
	HC908AZ60A-0L02M		
	HC908AZ60A-1L02M		
	HC908AZ60A-1L87J		
	HC908GR16-4L35K (Un1ock)		DB25 Cable
	<b>Motorola</b> - <b>HC05</b>		HC05E6 (0F82B)
<b>Motorola</b> - <b>HC (9) 12</b>	HC912DG128-0K50E	DB25 Cable	
	HC912DG128A-0L05H		
	HC912DG128A-3K91D		
	HC912DT128P-2L05H		
	HC912B32		
	HC912D60		
	HC912D60A		
	HC912BC32		
	HC12BC32		
HC12BE32			

# CG-PRO Users manual

	HC912BD32	
<b>Motorola</b> - <b>9S08</b>	9S08AC128	DB25 Cable
	9S08AC16	
	9S08AC32	
	9S08AC48	
	9S08AC60	
	9S08AC8	
	9S08AC96	
	9S08AW16	
	9S08AW32	
	9S08AW48	
	9S08AW60	
	9S08AW8	
	9S08DN16	
	9S08DN32	
	9S08DN48	
	9S08DN60	
	9S08DV128	
	9S08DV16	
	9S08DV32	
	9S08DV48	
	9S08DV60	
	9S08DV96	
	9S08DZ128	
9S08DZ16		

9S08DZ32
9S08DZ48
9S08DZ60
9S08DZ96
9S08EL16
9S08EL32
9S08FL16
9S08FL8
9S08GB32
9S08GB60
9S08GT16
9S08GT32
9S08GT60
9S08GW32
9S08GW64
9S08JE128
9S08JE64
9S08JM16
9S08JM32
9S08JM60
9S08JM8
9S08JS16
9S08JS8
9S08LC36
LC60

9S08LG16-0M48V
9S08LG32-0M48V
9S08LH36
9S08LH64
9S08LL16
9S08LL36
9S08LL64
9S08LL8
9S08MM128
9S08MM32
9S08MM32A
9S08MM64
9S08QA2
9S08QA4
9S08QB4
9S08QB8
9S08QD2
9S08QD4
9S08QE128
9S08QE16
9S08QE32
9S08QE4
9S08QE64
9S08QE8
9S08QE96

9S08QG4
9S08QG8
9S08RC16
9S08RC32
9S08RC60
9S08RC8
9S08RD16
9S08RD32
9S08RD60
9S08RD8
9S08RE16
9S08RE32
9S08RE60
9S08RE8
9S08RG32
9S08RG60
9S08SC4
9S08SE4
9S08SE8
9S08SF4
9S08SG16
9S08SG32
9S08SG4
9S08SG8
9S08SH4

# CG-PRO Users manual

	9S08SH8	
	9S08SL16	
	9S08SL8	
	9S08SU16	
	9S08SU8	
	9S08SV16	
	9S08SV8	
	MB91F060	
	MB91F061S	
	MB91F062BS	
	MB91F067	
	MB91F467S	
	MB91F575	
	MB91F577	
	MB91F578C	
	MB91F579C	
<b>Fujitsu</b> - <b>MB91F</b>	MB91F591B	
	MB91F592B	
	MB91F594B	
	MB91F594BS	
	MB91F596B	
	MB91F597B	
	MB91F599B	
	MB91F59AC	
	MB91F59BC	

8pins/V850 Adaptor

<b>Infineon</b>	TC1766	CAN Adaptor
	TC1793	
	TC1796	
	TC1797	
	XC2361A-56F	8pins/V850 Adaptor
	XC2361A-72F	
	XC2336A-56F	
	XC2336B-40F	
<b>Microchip - PIC18F</b>	PIC18F24J11	8pins/V850 Adaptor
	PIC18F24J50	
	PIC18F25J11	
	PIC18F25J50	
	PIC18F26J11	
	PIC18F26J13	
	PIC18F26J50	
	PIC18F26J53	
	PIC18F27J13	
	PIC18F27J53	
	PIC18F44J11	
	PIC18F44J50	
	PIC18F45J11	
	PIC18F45J50	
	PIC18F46J11	
	PIC18F46J13	
	PIC18F46J50	



	PIC18F46J53	
	PIC18F47J13	
	PIC18F47J53	
	PIC18F6520	
	PIC18F6620	
	PIC18F7620	
	PIC18F8520	
	PIC18F8620	
	PIC18F8720	
<b>Microchip</b> — <b>PIC16F</b>	PIC16F610	
	PIC16F506	
	PIC16F505	
	PIC16F1823	
	PIC16F1936	
	PIC16F616	
	PIC16HV616	
	PIC16HV610	
	PIC16LF1823	
	PIC16LF1936	
	PIC16F722	
	PIC16F1847	
	PIC16LF1847	
	PIC16F1824	
	PIC16LF1824	
	PIC16F1825	

PIC16LF1825
PIC16F1826
PIC16LF1826
PIC16F1827
PIC16LF1827
PIC16F1828
PIC16LF1828
PIC16F1829
PIC16LF1829
PIC16LF722
PIC16LF1902
PIC16F18313
PIC16LF1903
PIC16LF18313
PIC16F18323
PIC16LF18323
PIC16F1934
PIC16LF1934
PIC16F1937
PIC16LF1937
PIC16F1933
PIC16LF1933
PIC16F1938
PIC16LF1938
PIC16F1939

PIC16LF1939
PIC16F1454
PIC16LF1454
PIC16F1455
PIC16LF1455
PIC16F1459
PIC16LF1459
PIC16F1613
PIC16LF1613
PIC16F1713
PIC16LF1713
PIC16F1503
PIC16LF1503
PIC16F1507
PIC16LF1507
PIC16F1508
PIC16LF1508
PIC16F1509
PIC16LF1509
PIC16F1512
PIC16LF1512
PIC16F1513
PIC16LF1513
PIC16F1516
PIC16LF1516

PIC16F1517
PIC16LF1517
PIC16F1518
PIC16LF1518
PIC16F1519
PIC16LF1519
PIC16F1526
PIC16LF1526
PIC16F1527
PIC16LF1527
PIC16F1614
PIC16LF1614
PIC16F1618
PIC16LF1618
PIC16F1615
PIC16LF1615
PIC16F1619
PIC16LF1619
PIC16(L)F1703
PIC16(L)F1704
PIC16(L)F1705
PIC16(L)F1707
PIC16(L)F1708
PIC16(L)F1709
PIC16(L)F1716

PIC16(L)F1717
PIC16(L)F1718
PIC16(L)F1719
PIC16(L)F18324
PIC16F18325
PIC16(L)F18326
PIC16(L)F18344
PIC16F18345
PIC16(L)F18346
PIC16LF18325
PIC16LF18345
PIC16F1946
PIC16LF1946
PIC16F1947
PIC16LF1947
PIC16LF1566
PIC16LF1567
PIC16LF1904
PIC16LF1906
PIC16LF1907
PIC16F631
PIC16F636
PIC16F639
PIC16F677
PIC16F684

	PIC16F685	
	PIC16F687	
	PIC16F688	
	PIC16F689	
	PIC16F690	
	PIC10F220	
	PIC10F222	
	PIC12F1501	
	PIC12F1571	
	PIC12F1572	
	PIC12F1612	
	PIC12F1822	
	PIC12F1840	
	PIC12F508	
<b>Microchip</b>	PIC12F509	
<b>PIC10F 12F</b>	PIC12F510	
	PIC12F519	
	PIC12F608	
	PIC12F609	
	PIC12F615	
	PIC12F617	
	PIC12F635	
	PIC12F683	
	PIC12FHV609	
	PIC12FHV615	

# CG-PRO Users manual

	PIC12FLF1501	
	PIC12FLF1552	
	PIC12FLF1571	
	PIC12FLF1572	
	PIC12FLF1612	
	PIC12FLF1822	
	PIC12FLF1840	
	R7F701002	
	R7F701003	
	R7F701006	
	R7F701007	
	R7F701008	
	R7F701009	
	R7F701010	
	R7F701011	
	R7F701012	
	R7F701013	
	R7F701014	
	R7F701015	
	R7F701016	
	R7F701017	
	R7F701018	
	R7F701019	
<b>Renesas</b>	R7F701020	
-	R7F701021	
<b>RH850</b>		8pins/V850Adaptor

R7F701022
R7F701023
R7F701024
R7F701025
R7F701026
R7F701027
R7F701028
R7F701029
R7F701030
R7F701033
R7F701034
R7F701040
R7F701041
R7F701042
R7F701043
R7F701044
R7F701045
R7F701046
R7F701047
R7F701048
R7F701049
R7F701050
R7F701051
R7F701052
R7F701053



R7F701054
R7F701055
R7F701056
R7F701057
R7F701401
R7F701402
R7F701403
R7F701404
R7F701405
R7F701406
R7F701407
R7F701408
R7F701410
R7F701411
R7F701412
R7F701421
R7F701422
R7F701423
R7F701424
R7F701425
R7F701426
R7F701427
R7F701428
R7F701430
R7F701431

# CG-PRO Users manual

	R7F701432	
<b>Renesas</b> - <b>R8C</b>	R5F2154	8pins/V850 Adaptor
	R5F21546E	
	R5F21546F	
	R5F21546G	
	R5F21546H	
	R5F21547E	
	R5F21547F	
	R5F21547G	
	R5F21547H	
	R5F21548E	
	R5F21548F	
	R5F21548G	
	R5F21548H	
	R5F2154AE	
	R5F2154AF	
	R5F2154AG	
	R5F2154AH	
	R5F2154CE	
	R5F2154CF	
	R5F2154CG	
R5F2154CH		
<b>Motorola</b> - <b>MPC56XX</b>	MPC5604P	8pins/V850 Adaptor
<b>Freescale</b> - <b>MAC7XXX</b>	MAC7241	8pins/V850 Adaptor
	MAC7242	

# CG-PRO Users manual

Renesas - H8SX	R5F61721	8pins/V850 Adaptor
	R5F61723	
	R5F61725	
	R5F61726	
	R5F61727	
Renesas - M32R	M32176F2	8pins/V850 Adaptor
	M32176F3	
	M32176F4	
	M32186F8	
NXP - PCF79XX	PCF7941	8pins/V850 Adaptor
	PCF7945	
	PCF7952	
	PCF7953	
ST - ST10F	ST10F267	8pins/V850 Adaptor
	ST10F272	
	ST10F275	
	ST10F269	
	ST10F276	
ST - STM8	STM8AF5268	8pins/V850 Adaptor
	STM8AF5269	
	STM8AF5286	
	STM8AF5288	
	STM8AF5289	
	STM8AF528A	
	STM8AF52A6	
	STM8AF52A8	

STM8AF52A9
STM8AF52AA
STM8AF6213
STM8AF6223
STM8AF6223A
STM8AF6226
STM8AF6246
STM8AF6248
STM8AF6266
STM8AF6268
STM8AF6269
STM8AF6286
STM8AF6288
STM8AF6289
STM8AF628A
STM8AF62A6
STM8AF62A8
STM8AF62A9
STM8AF62AA
STM8AL3136
STM8AL3138
STM8AL3146
STM8AL3148
STM8AL3166
STM8AL3168
STM8AL3188

STM8AL3189
STM8AL318A
STM8AL31E88
STM8AL31E89
STM8AL31E8A
STM8AL3LE88
STM8AL3LE89
STM8AL3LE8A
STM8AL3L46
STM8AL3L48
STM8AL3L66
STM8AL3L68
STM8AL3L88
STM8AL3L89
STM8AL3L8A
STM8L051F3
STM8L052C6
STM8L052R8
STM8L101F1
STM8L101F2
STM8L101F3
STM8L101G2
STM8L101G3
STM8L101K3
STM8L151C2
STM8L151C3

STM8L151C4
STM8L151C6
STM8L151C8
STM8L151F2
STM8L151F3
STM8L151G2
STM8L151G3
STM8L151G4
STM8L151G6
STM8L151K2
STM8L151K3
STM8L151K4
STM8L151K6
STM8L151M8
STM8L151R6
STM8L151R8
STM8L152C4
STM8L152C6
STM8L152C8
STM8L152K4
STM8L152K6
STM8L152K8
STM8L152M8
STM8L152R6
STM8L152R8
STM8L162R8

STM8L162M8
STM8S003F3
STM8S003K3
STM8S005C6
STM8S005K6
STM8S007C8
STM8S103F2
STM8S103F3
STM8S103K3
STM8S105C4
STM8S105C6
STM8S105K4
STM8S105K6
STM8S105S4
STM8S105S6
STM8S207C6
STM8S207C8
STM8S207CB
STM8S207K6
STM8S207K8
STM8S207M8
STM8S207MB
STM8S207R6
STM8S207R8
STM8S207RB
STM8S207S6

# CG-PRO Users manual

	STM8S207S8		
	STM8S207SB		
	STM8S208C6		
	STM8S208C8		
	STM8S208CB		
	STM8S208M8		
	STM8S208MB		
	STM8S208R6		
	STM8S208R8		
	STM8S208RB		
	STM8S208S6		
	STM8S208S8		
	STM8S208SB		
	STM8S903F3		
	STM8S903K3		
<b>TI</b> - <b>TMS370</b>	TMS370C002A		CG-PRO expanding board + TMS370 Adaptor
	TMS370C010A		
	TMS370C012A		
	TMS370C020A		
	TMS370C022A		
	TMS370C032A		
	TMS370C040A		
	TMS370C042A		
	TMS370C050A		
TMS370C052A			
	TMS370C056A		



# CG-PRO Users manual

	TMS370C058A	
	TMS370C256A	
TI - TMS570	TMS570LS1113	8pins/V850 Adaptor
	TMS570LS1114	
	TMS570LS1224	
ST - SPC560	SPC560B40L1	8pins/V850 Adaptor
	SPC560B40L3	
	SPC560B40L5	
	SPC560B50L1	
	SPC560B50L3	
	SPC560B50L5	
	SPC560B50B2	
	SPC560B54L3	
	SPC560B54L5	
	SPC560B60L3	
	SPC560B60L5	
	SPC560B60L7	
	SPC560B64L3	
	SPC560B64L5	
	SPC560B64L7	
	SPC560C40L1	
	SPC560C40L3	
	SPC560C50L1	
	SPC560C50L3	
	SPC560D30L1	
SPC560D30L3		

	SPC560D40L1	
	SPC560D40L3	
	SPC560P44L3	
	SPC560P44L5	
	SPC560P50L3	
	SPC560P50L5	
	SPC560P54L3	
	SPC560P54L5	
	SPC560P60L3	
	SPC560P60L5	
	SPC56AP54	
	SPC564B64L8	
	S6J311AHAA	
	S6J311EJAA	
	S6J311EHAA	
	S6J311BHAB	
	S6J311CHAB	
	S6J311DJAB	
	S6J311DHAB	
	S6J311DHBB	
	S6J311EJAB	
	S6J311EHAB	
	S6J311EHBB	
	S6J312AHAA	
	S6J320CQXA	
	S6J323C	

# CG-PRO Users manual

<b>CYPESS</b> - <b>Traveo</b>	S6J324C	8pins/V850 Adaptor
	S6J325C	
	S6J326C	
	S6J327C	
	S6J328C	
	S6J324CLS	
	S6J324CKS	
	S6J326CLS	
	S6J326CKS	
	S6J32A9	
	S6J32B9	
	S6J32C9	
	S6J32D9	
	S6J32AA	
	S6J32BA	
	S6J32CA	
	S6J32DA	
	S6J331E	
	S6J336A	

## 6.2 Storage Chips

Vendor	Model	Remarks
AMD	AM29BL802CB	CG-PRO expanding board+AM29BLXXX adaptor
	AM29F200BB	CG-PRO expanding board+AM29FXXX adaptor
	AM29F400BB	
	AM29F800BB	
ST	080DQ	M35080adaptor
	160DQ	
	35080VP V6	
	35080_3 6	
	35128WT	35160WT Dedicated adaptor
	35160WT	
	M29F200BB	CG-PRO expanding board + AM29FXXX Adaptor
	M29F400BB	
8 PIN	24C01	8 pins/V850 Adaptor
	24C01A	
	24C01B	
	24C02	
	24C02B	
	24C04	
	24C08	
	24C16	

24C32
24C64
24C128
24C256
24CLC01
24LC01A
24LC02
24LC04
24LC16
24LC32
25010
25020
25040
25080
25128
25256
25320
25640
93A86
93C46
63C56
93C57
93C66
93C76
93C86

	93CS56	
	93CS66	
	93LC46	
	93LC56	
	93LC66	
	93LC76	
	93LC86	
	93S56	
	95010	
	95020	
	95040	
	95080	
	95128	
	95160	
	95256	
	95320	
	95640	