



# **2010 BMW X1 mileage Repair, CGPRO one-step fix!!!!**

Car Model: BMW X1 (imported version)

Year: 2010 model

Instrument tray table: 35080

Guard against theft: CAS3-0L15Y

Device: CGPRO

Operation: mileage repair

# CG Operating tutorial:

## 1. View specific models.

PART 01



2. Record the original mileage.

PART 02



3. The vehicle power off, remove the instrument module, view the style, determine the storage chip.





13000430104770



JOHNSON  
CONTROLS  
**4032130-00**

ZB-NR. 9 187 336-01  
VI RP AI 01  
HW 26 DIAG 08D0  
SW A3.45.82 COD 08  
PN 009 29.07.10  
LFND. NR. 430104770  
LIEFERANT 258115 10



IK918733601M















080DOWQ

4. Remove the CAS module, view the style, and determine the storage chip.

PART 04













					<b>61.35-9226238-01</b> <b>2102151696</b>	
Software-Version			CAS 3			
MCV	FSV	OSV	BMW AG			
00.00.00	2.5.7	3.3.0	D-80788 München			
HW-/SW-/Cod.-/Diag.-Index			FCC ID: XR3CAS3			
C4	20.5	09	06A0	IC: 2677 - CAS3		
			 11ER1 - 000003			
						
SIEMENS VDO			5WK4 9515BBR			



www.c...r.com

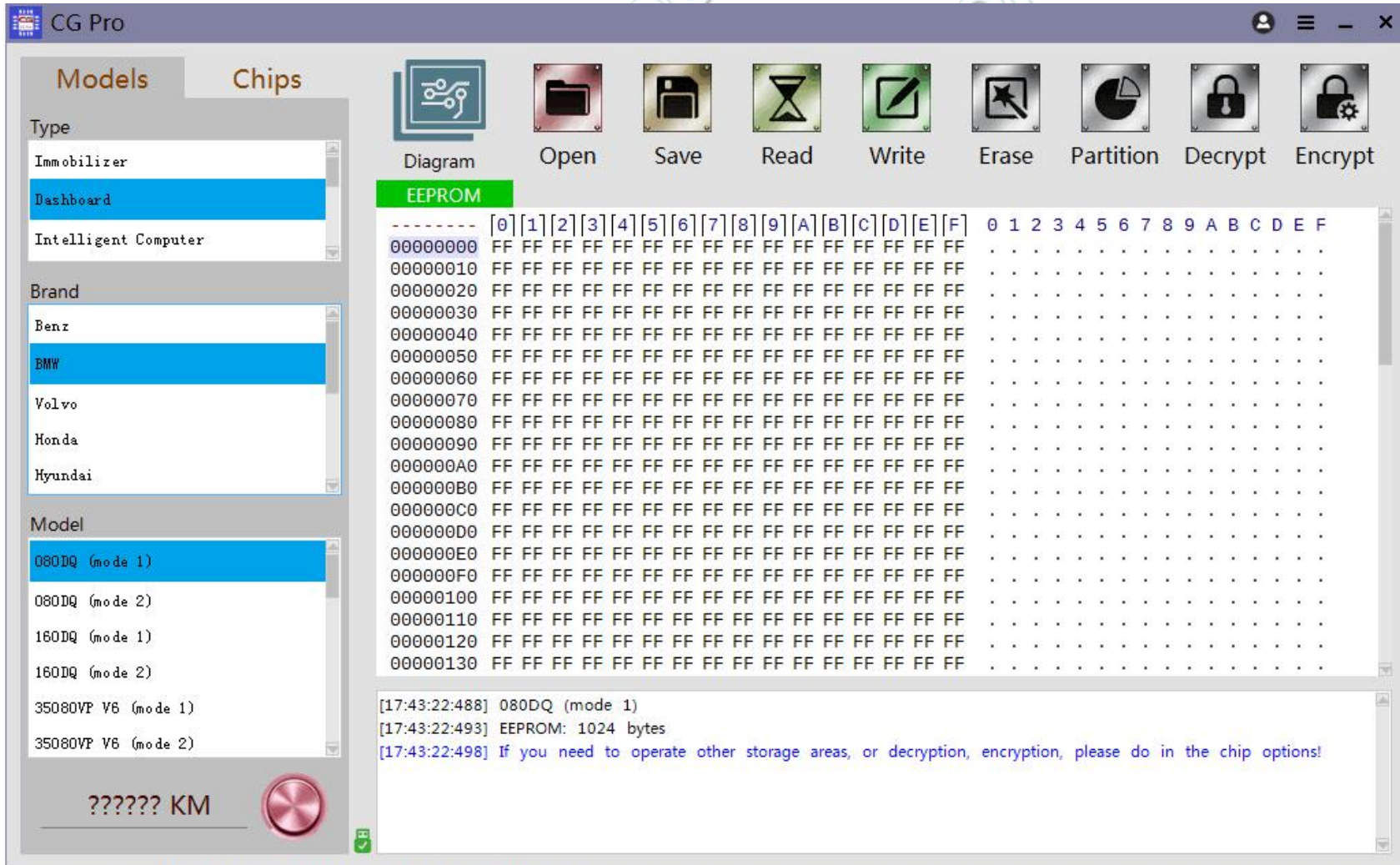
om

www.c...





5. Open the special CGPRO software and enter the corresponding operation interface. First, clean the instrument chip, place it into the adapter and repair it into the target mileage.



6. Clean the glue on CAS module,  
use DB25 adapter wiring,  
and repair it into target mileage.





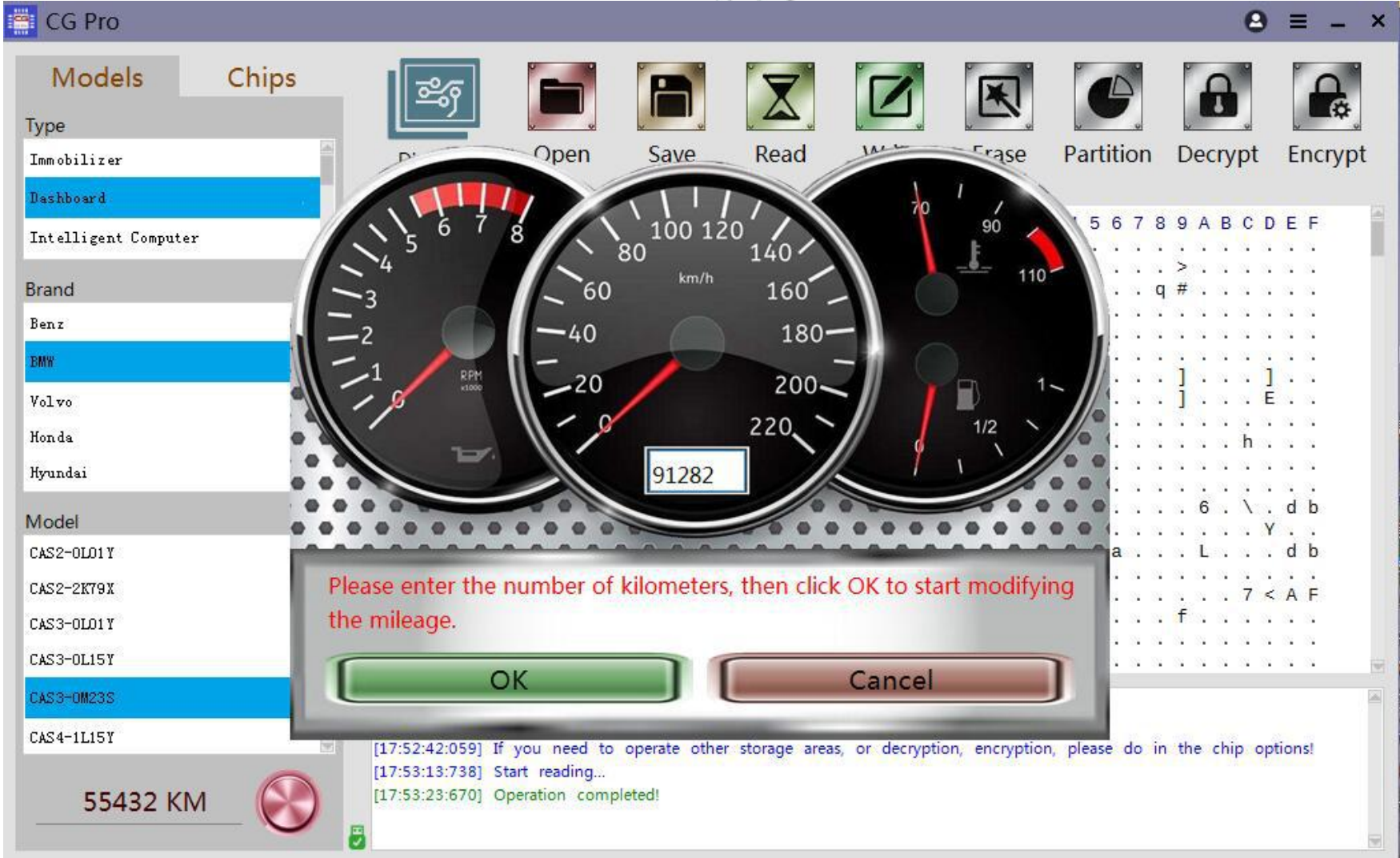


WWW

com

car.com

WWW





7. The instrument panel and CAS have been processed and loaded. Some will appear fault code, clear code can; Some will display English, using CGDI will be the instrument code.



Done!