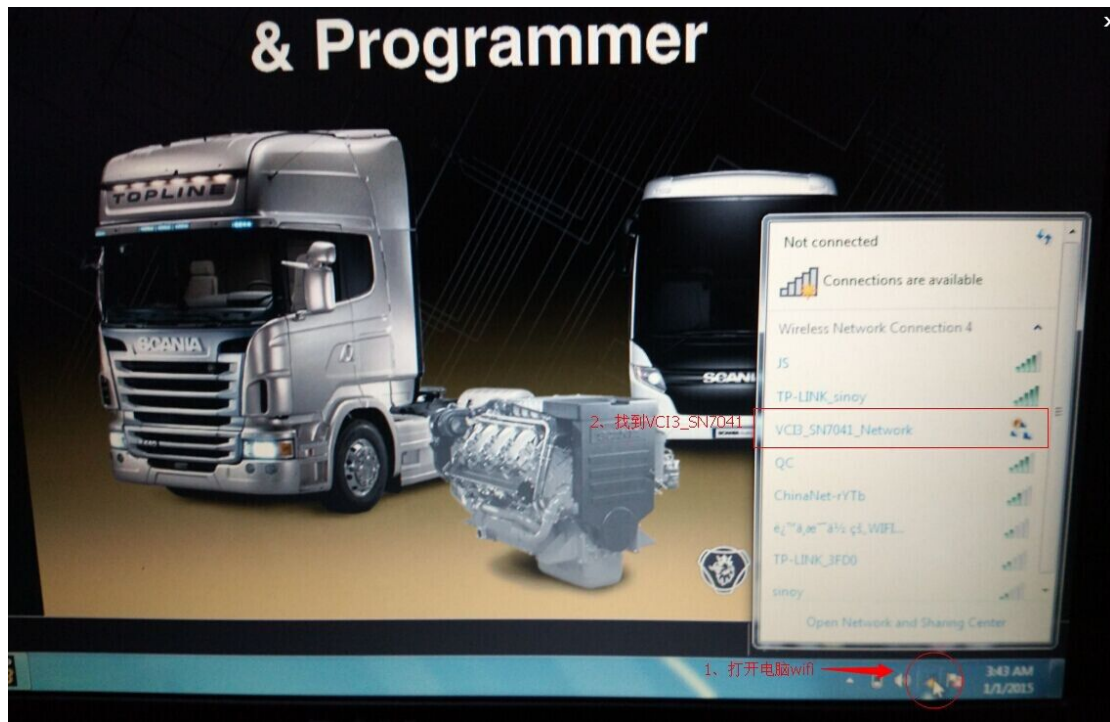


How to Set [Scania Diagnos 3](#) WiFi Connection

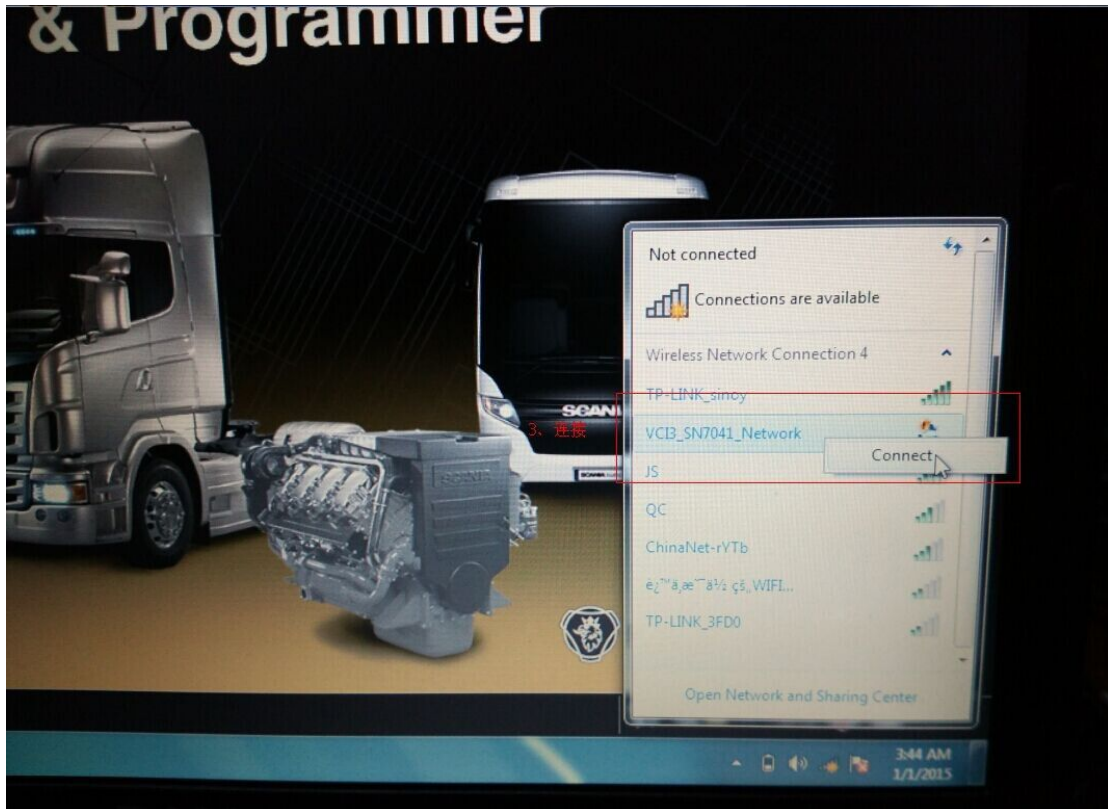
Tips: You need connect the device to vehicle first

Then follow following instruction to do it:

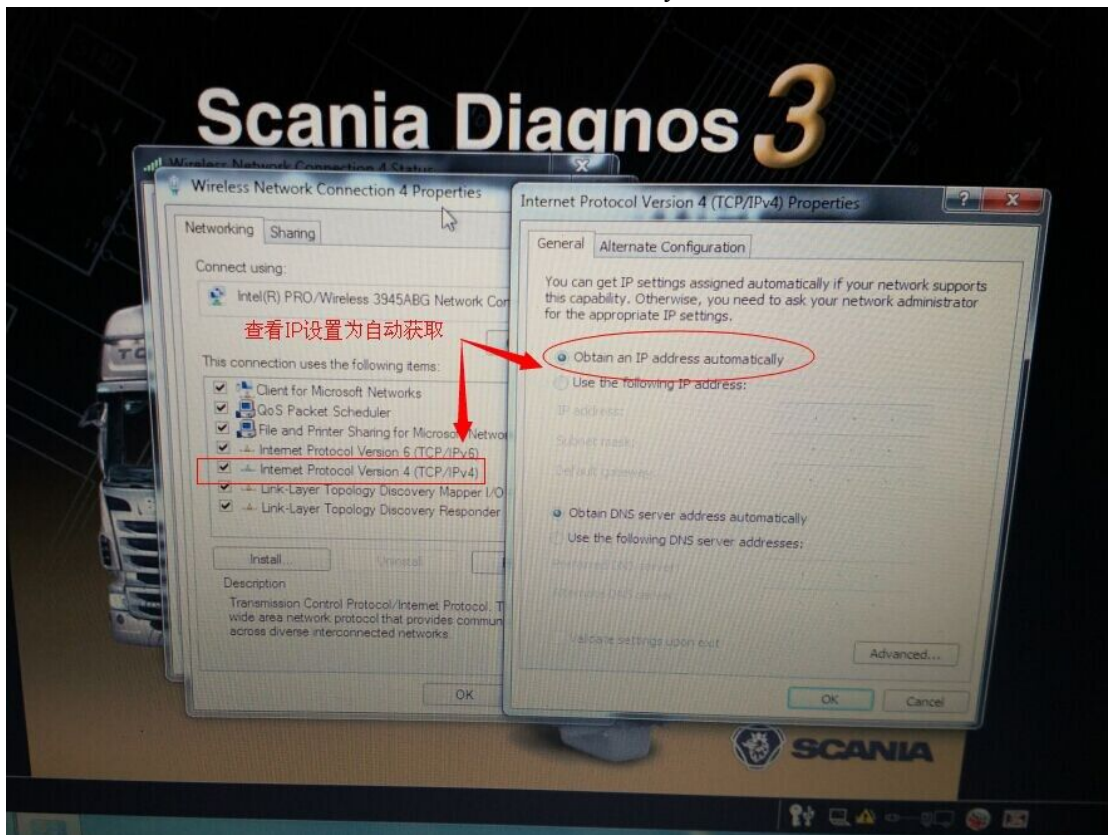
1. Open WiFi in your laptop
2. Find out VCI3-SN7041



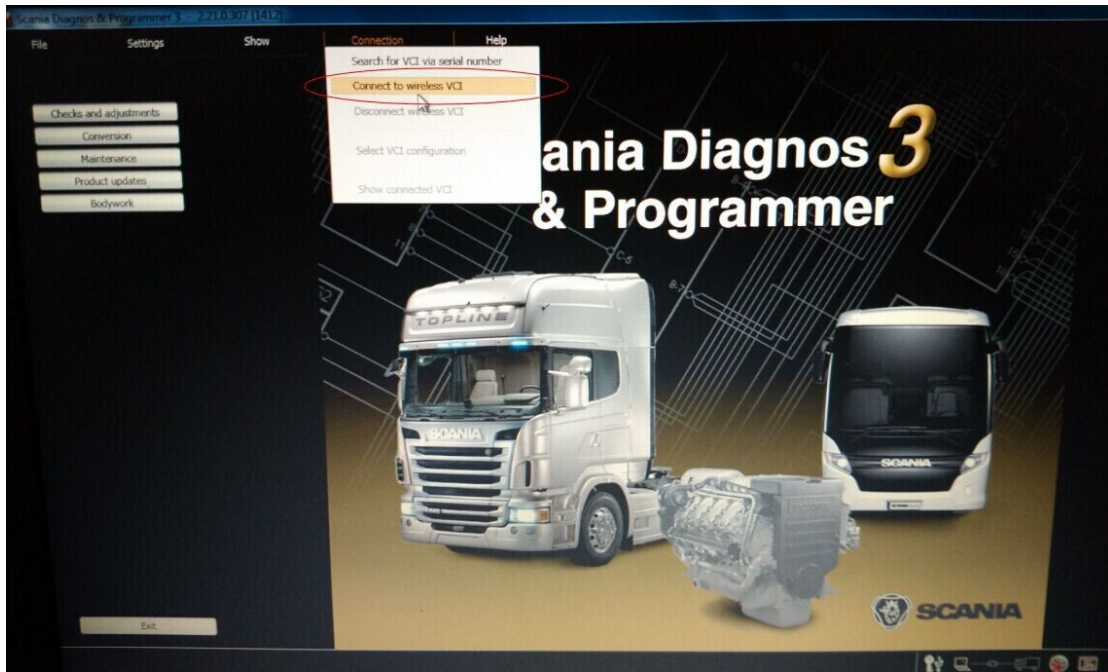
3. Click “connect”



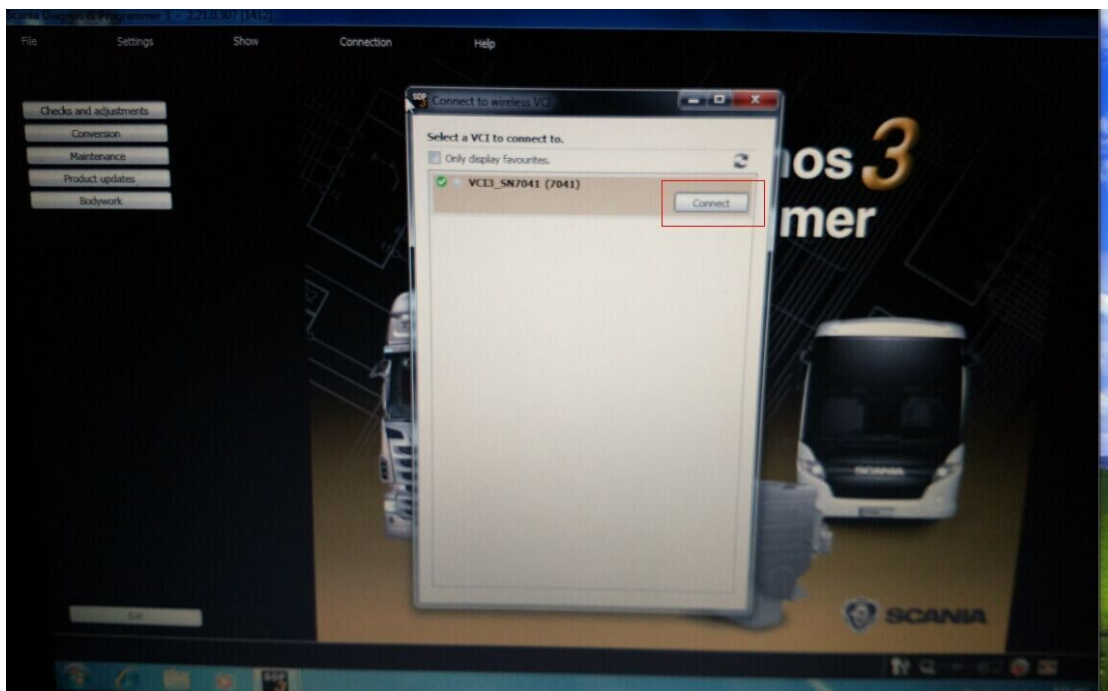
4. Check IP and set it as "obtain an IP address automatically"



5. Open Scania VCI SDP3 software, choose "connect to wireless VCI" in connection menu



6. Click Connect as the picture show



7. WiFi connect successfully

Scania Diagnos 3 & Programmer

