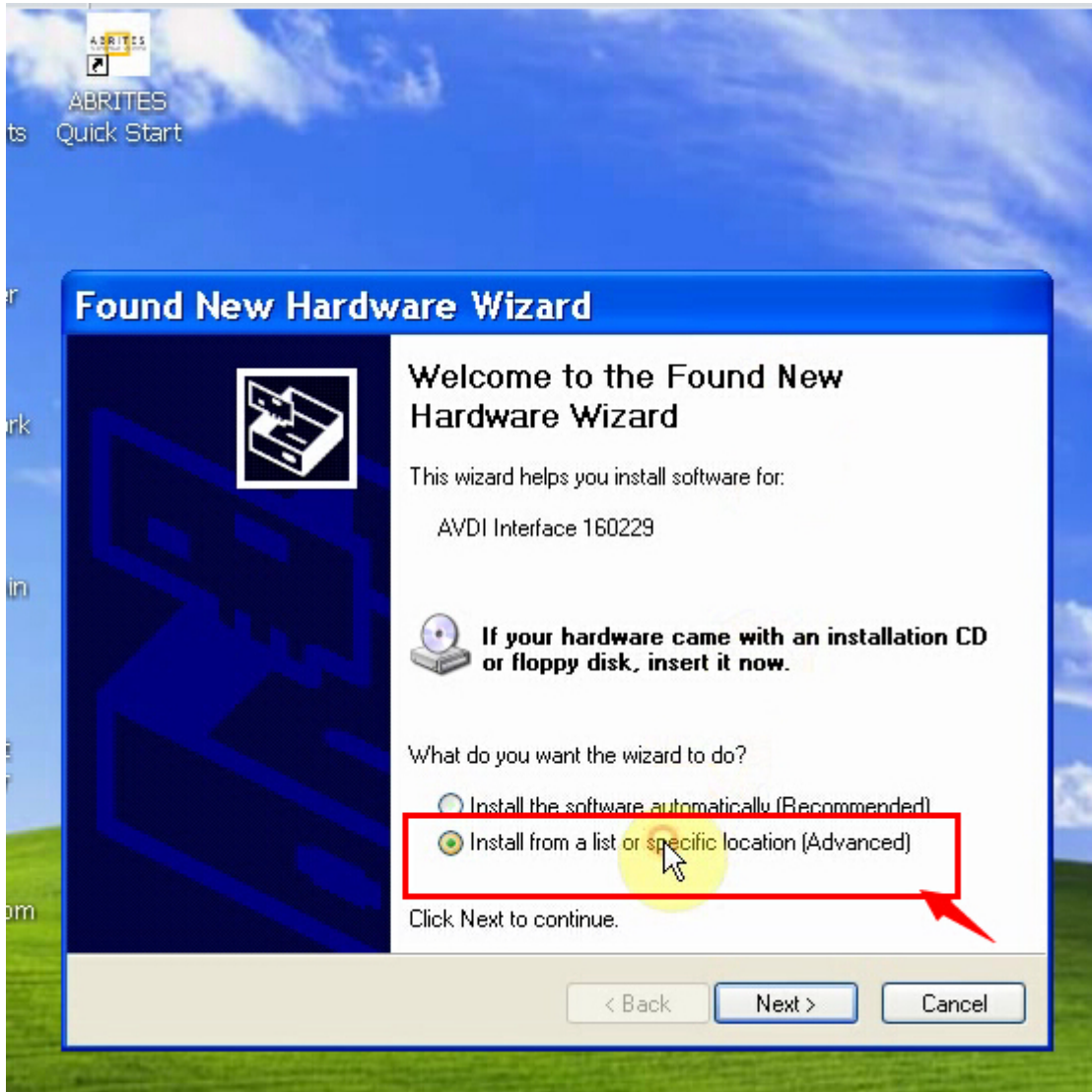
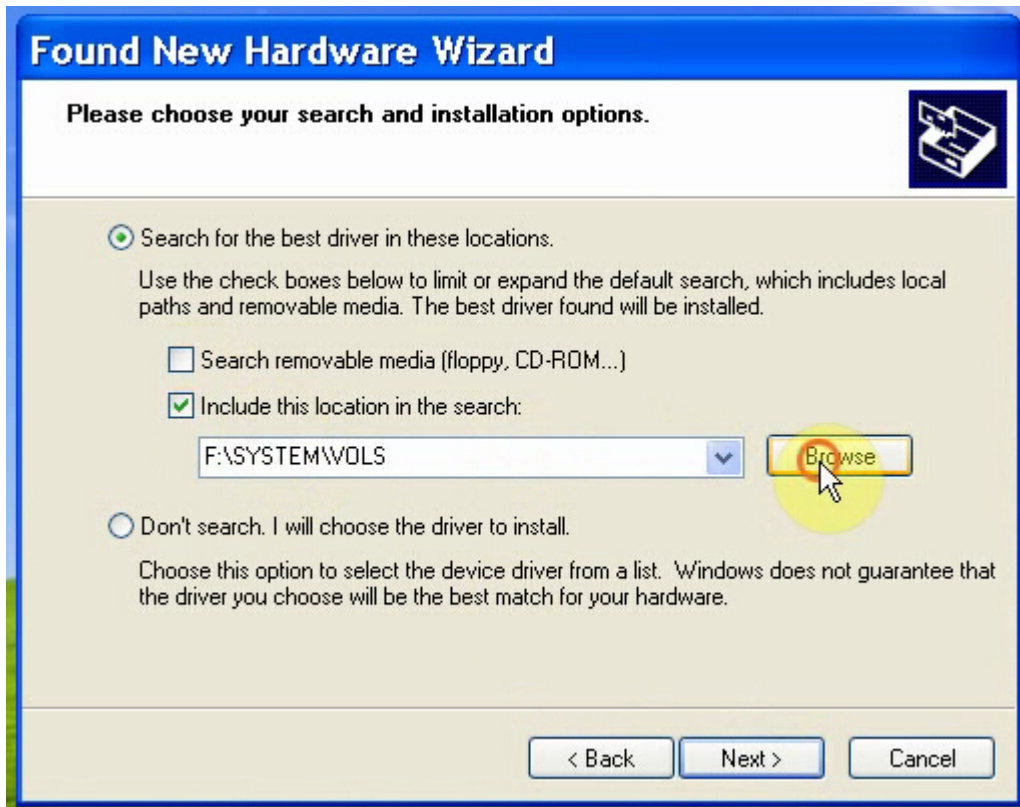


ABRITES
Quick Start

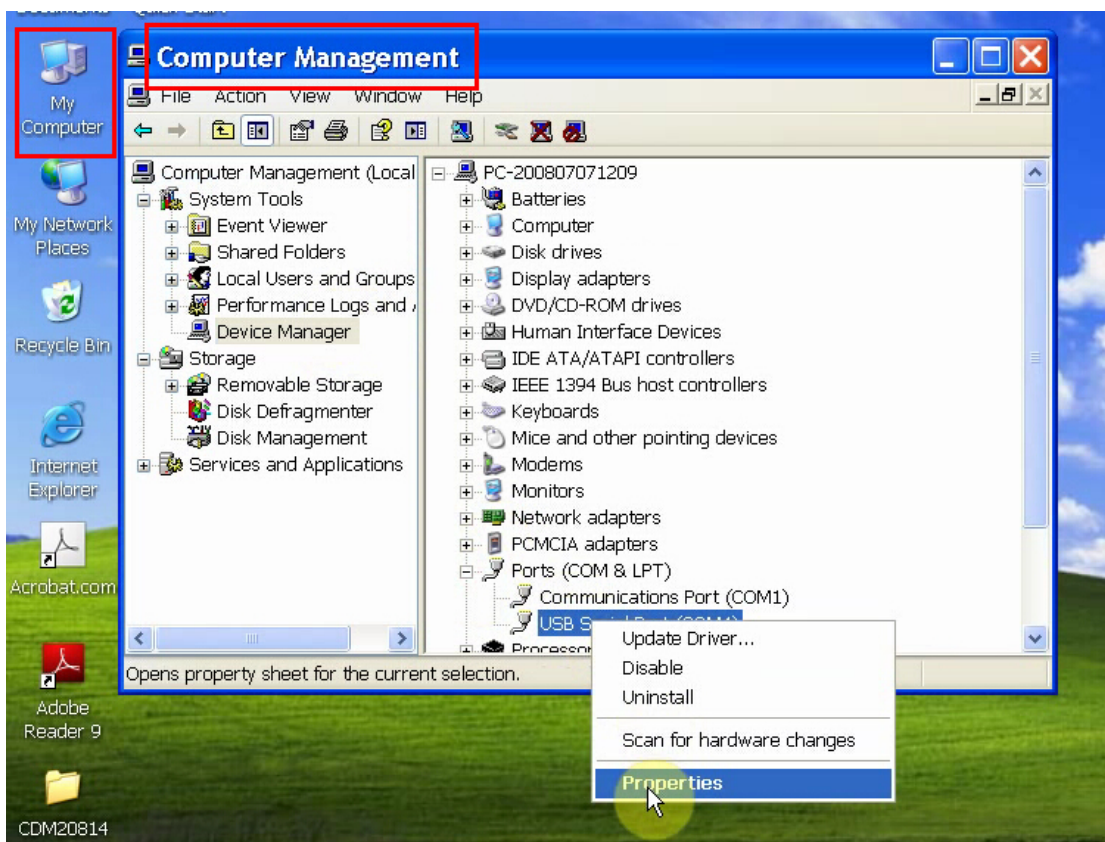
Firstly connect the Softdog to FVDI main unit (Note: do not connect USB cable to the computer). Then use USB cable to connect FVDI and the computer

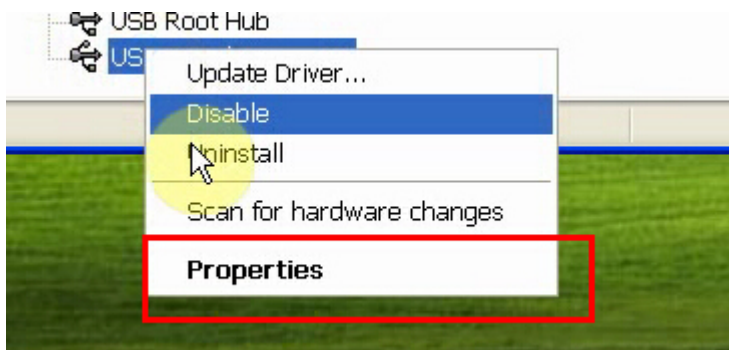
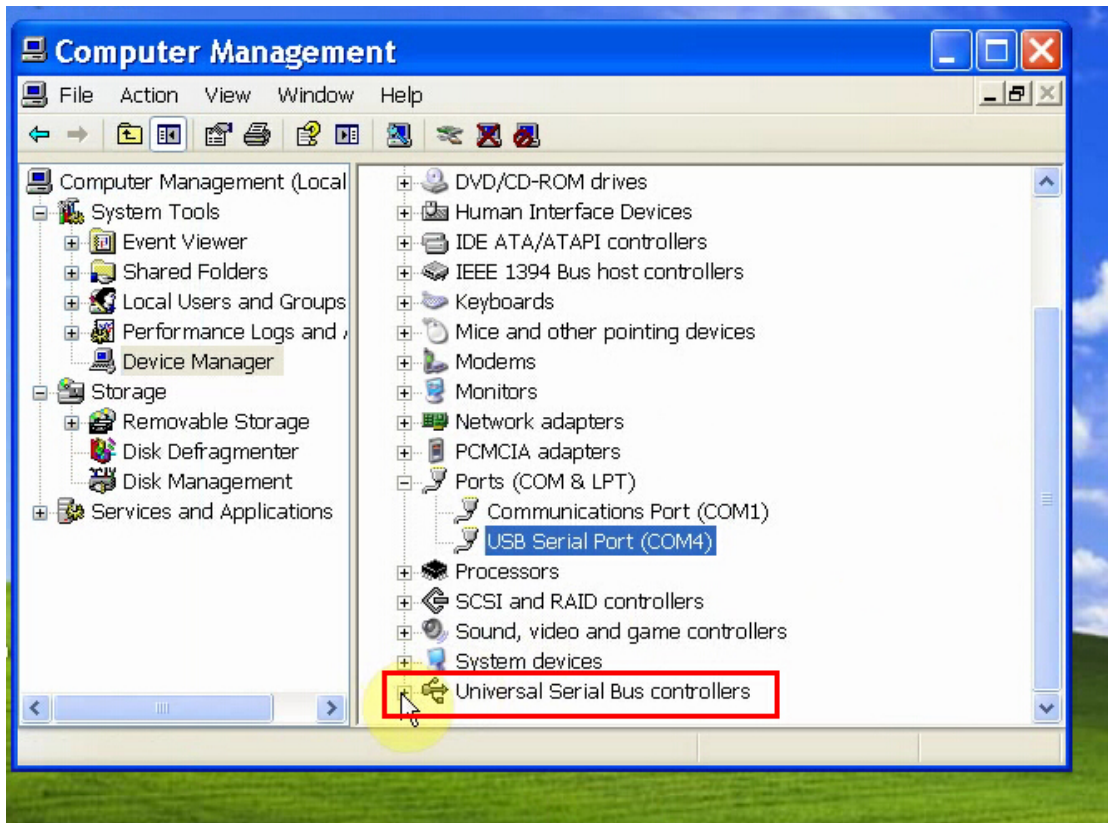
The diagram illustrates the hardware setup for connecting a Softdog to an FVDI main unit and a laptop. The FVDI main unit is a black rectangular device with a label that reads "FVDI V2015 ID:F07275". A power cable (3) is connected to the FVDI unit. A cable (1) connects the Softdog to the FVDI unit. A USB cable (4) connects the FVDI unit to the laptop. A note in a grey box states: "Firstly connect the Softdog to FVDI main unit (Note: do not connect USB cable to the computer). Then use USB cable to connect FVDI and the computer".

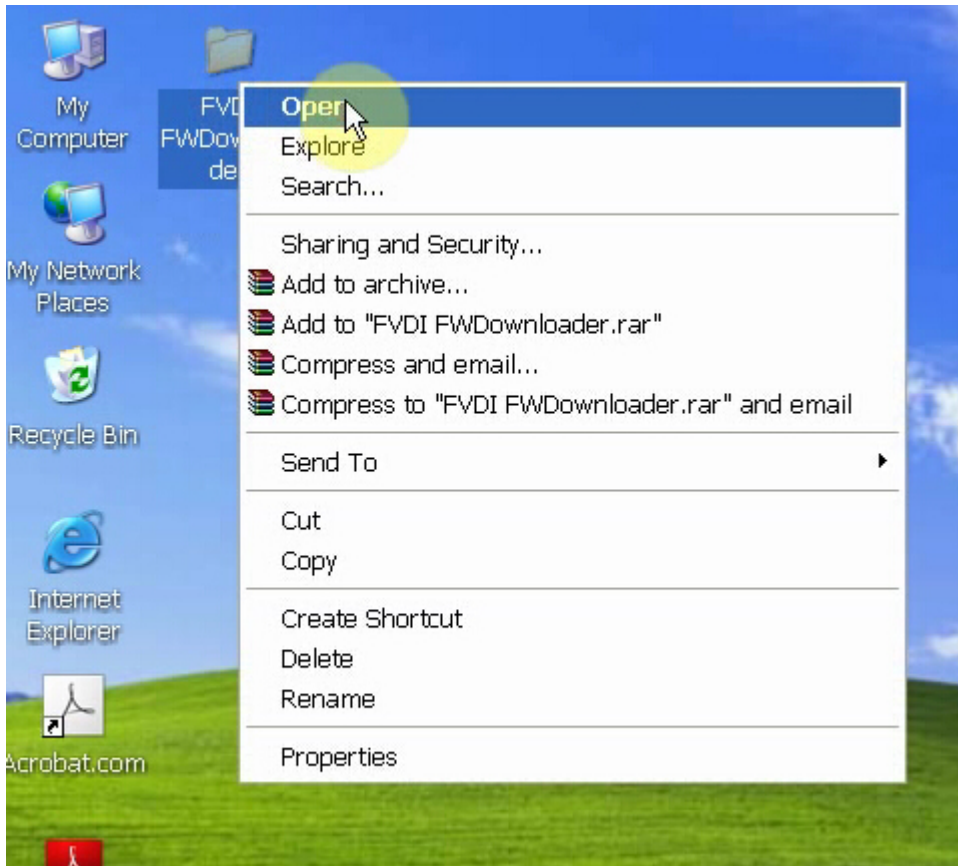
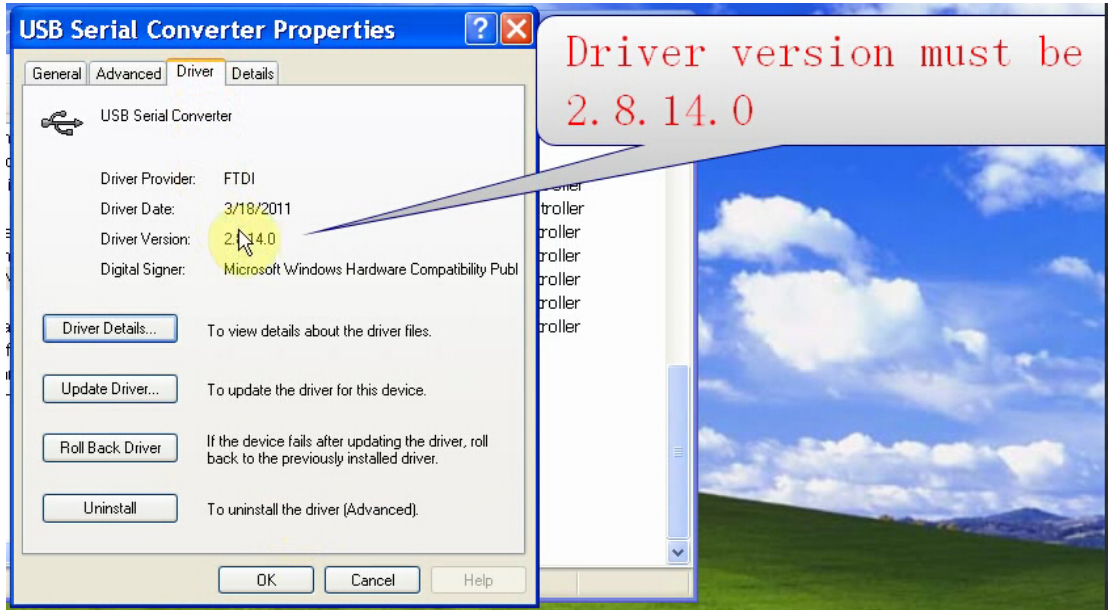


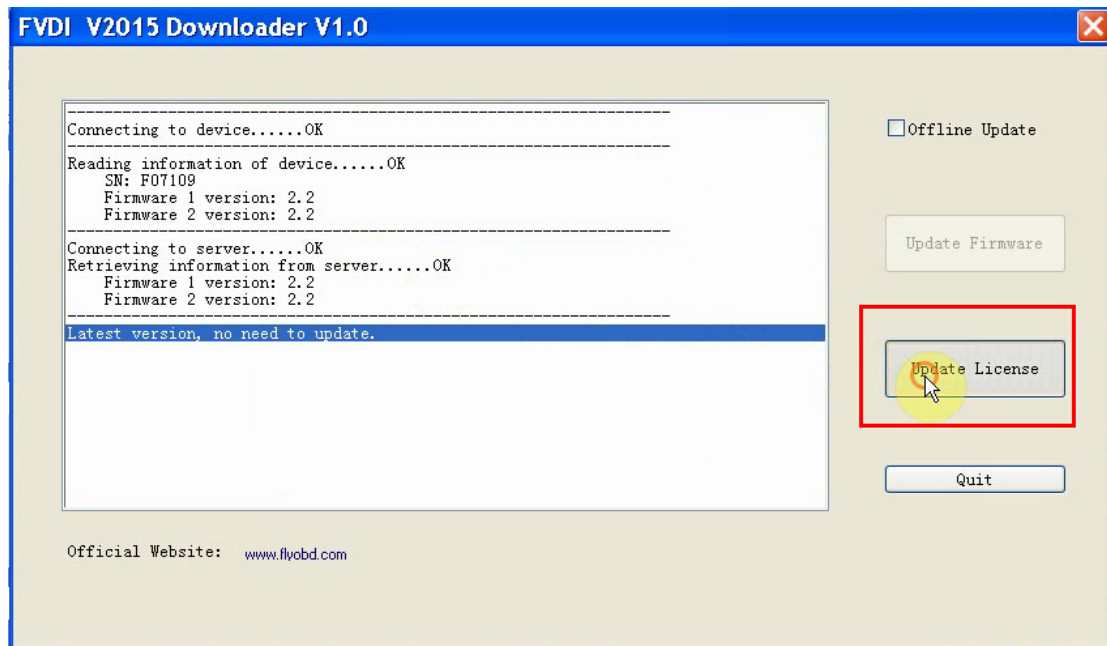
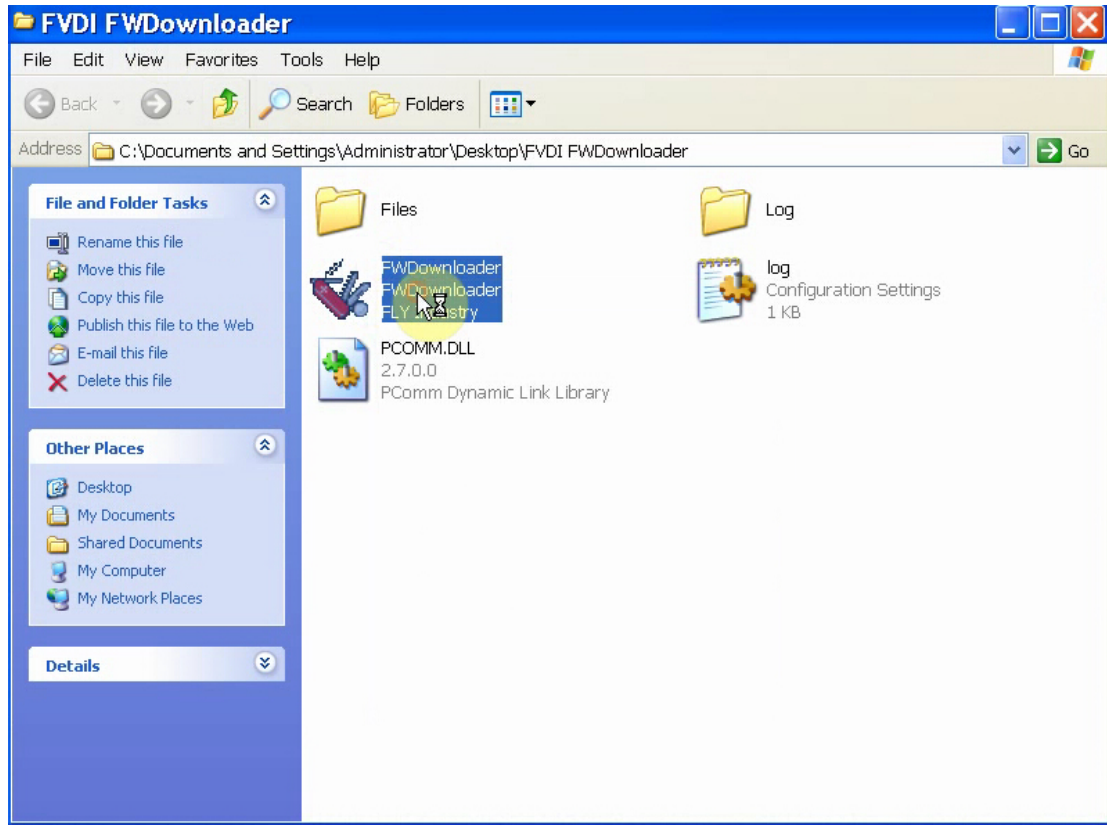


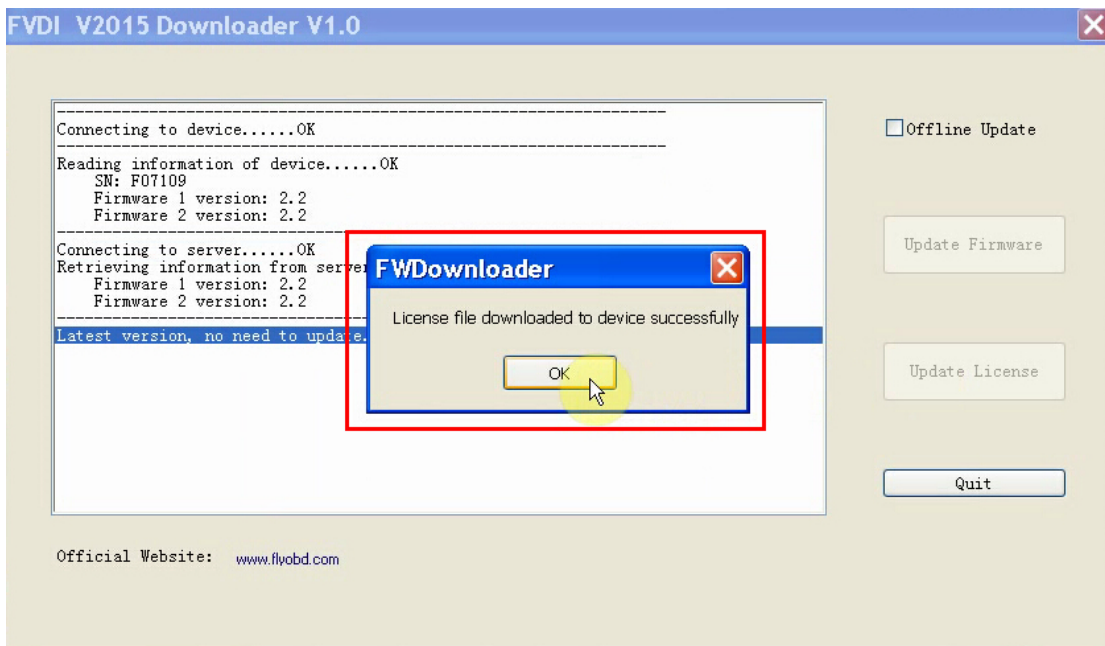
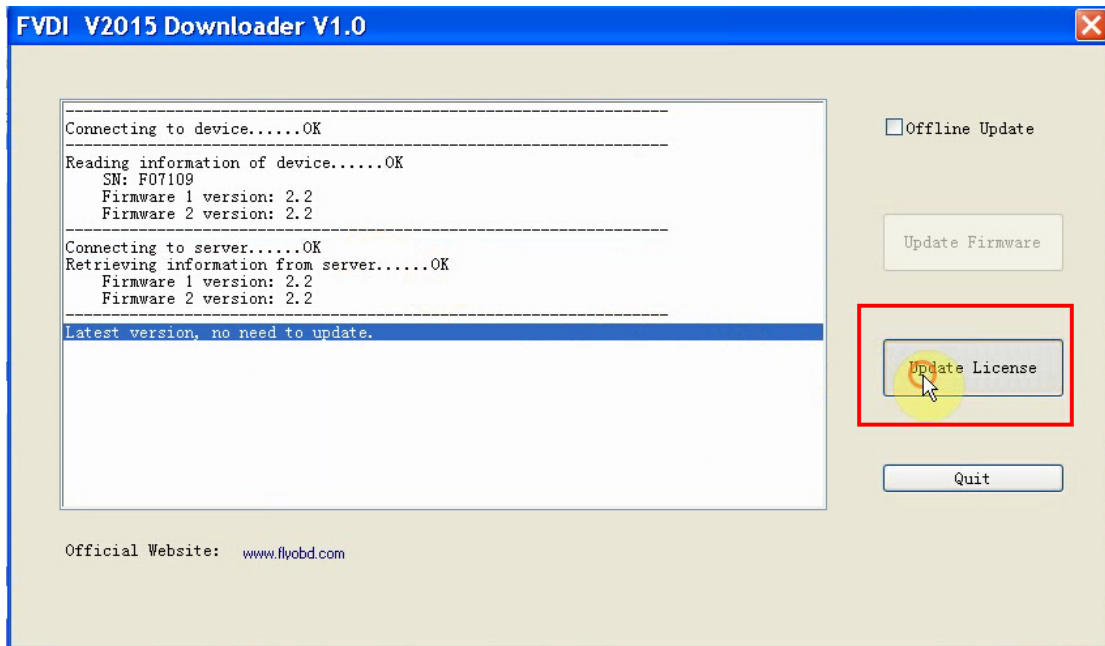


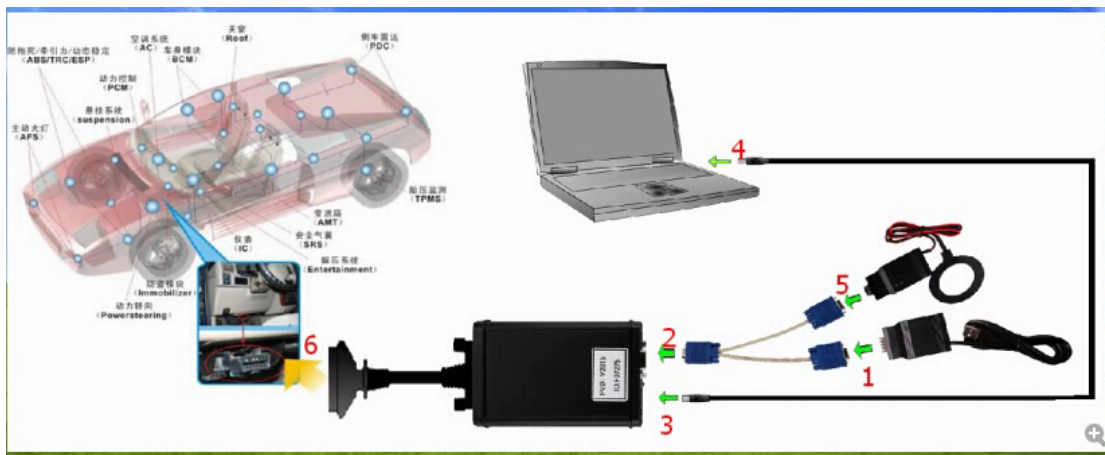
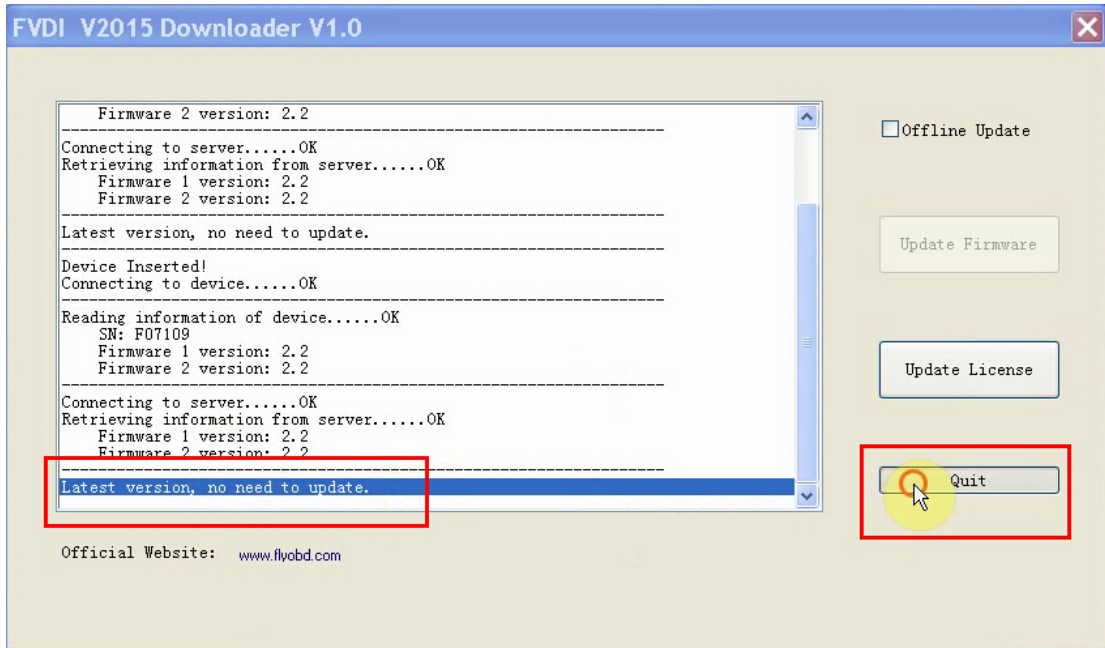


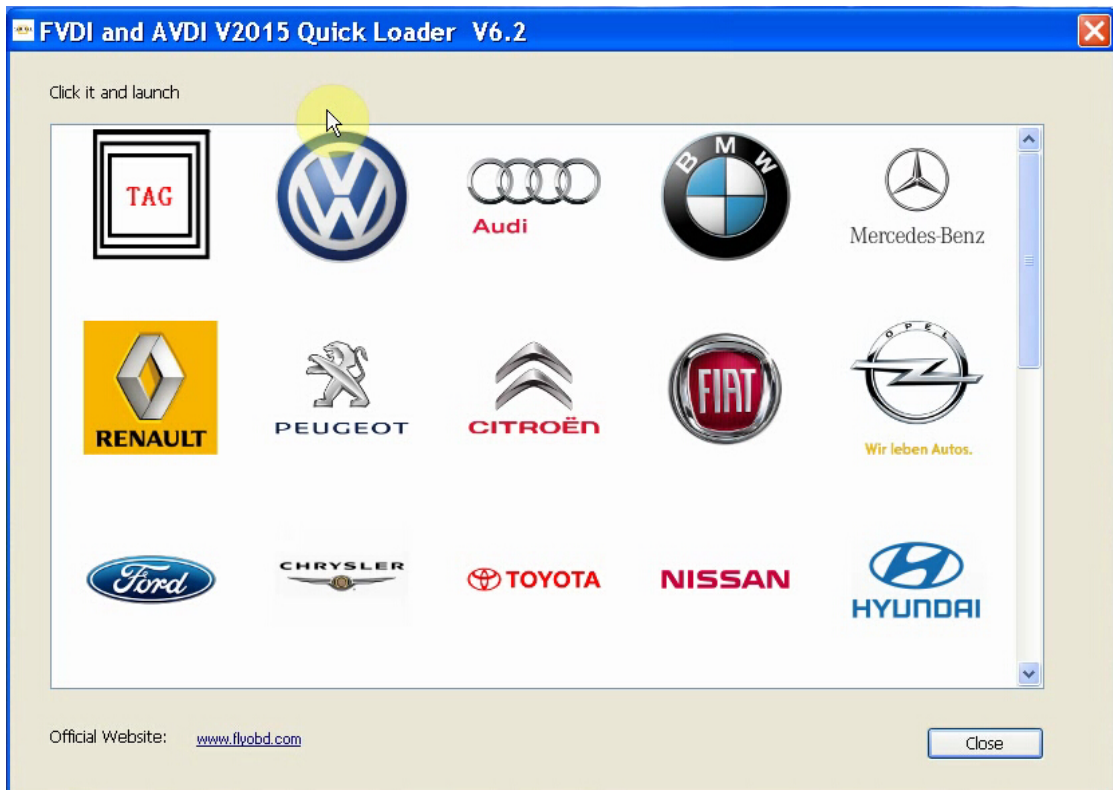
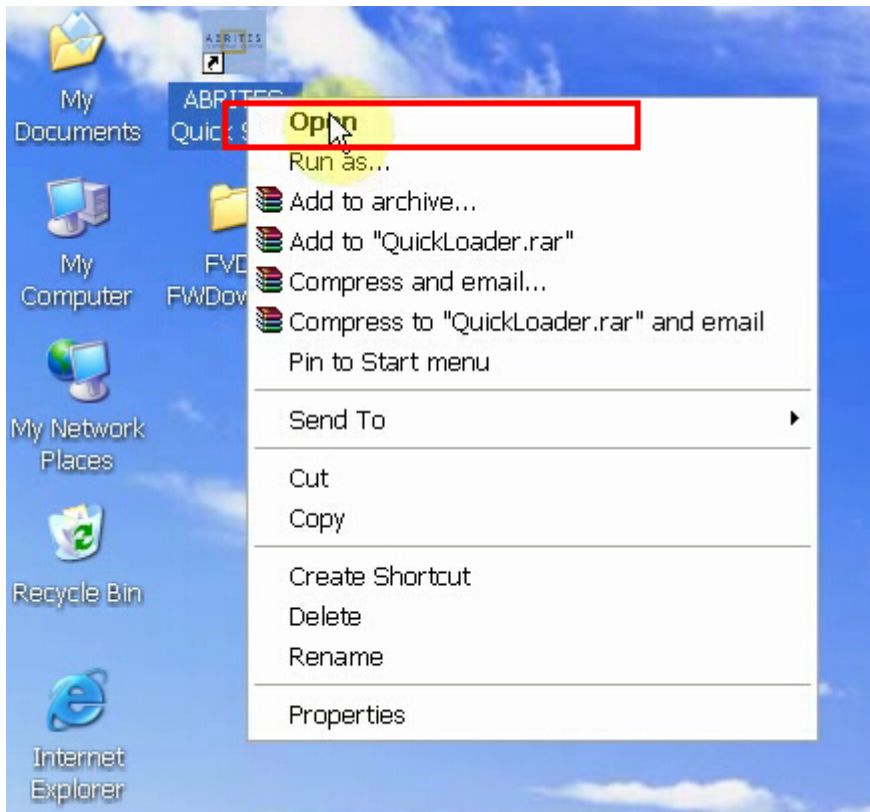


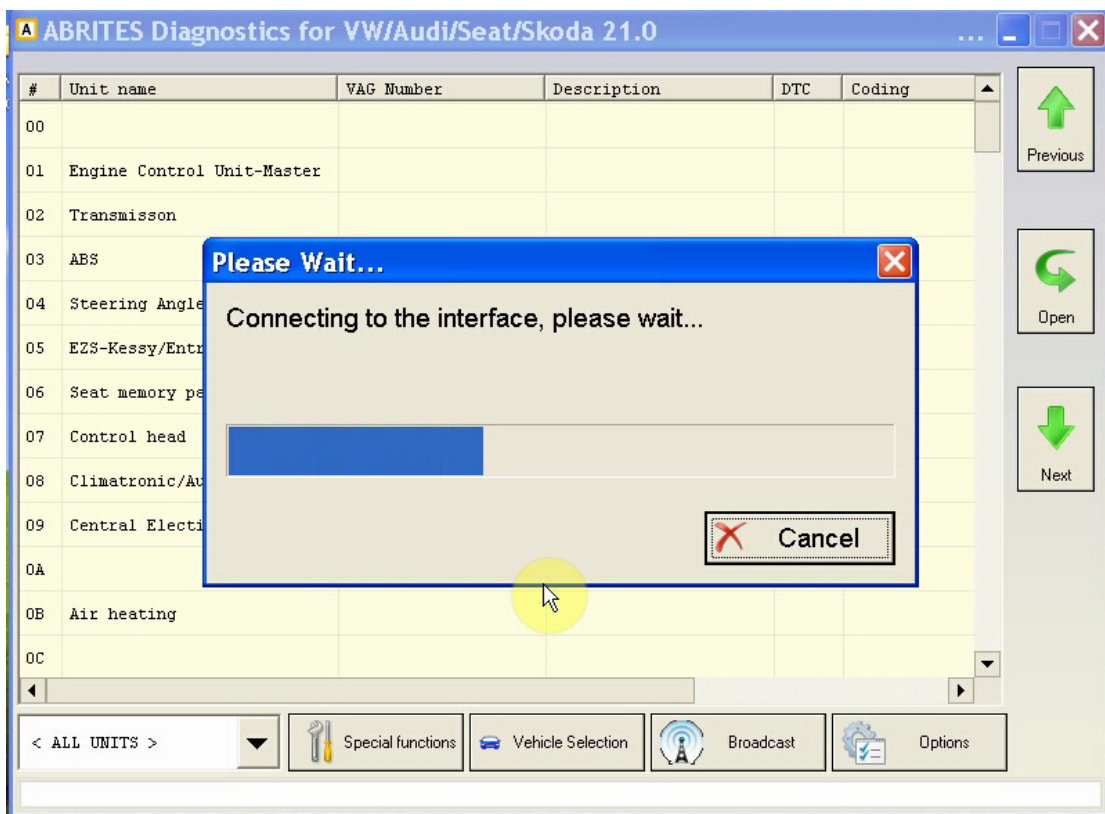
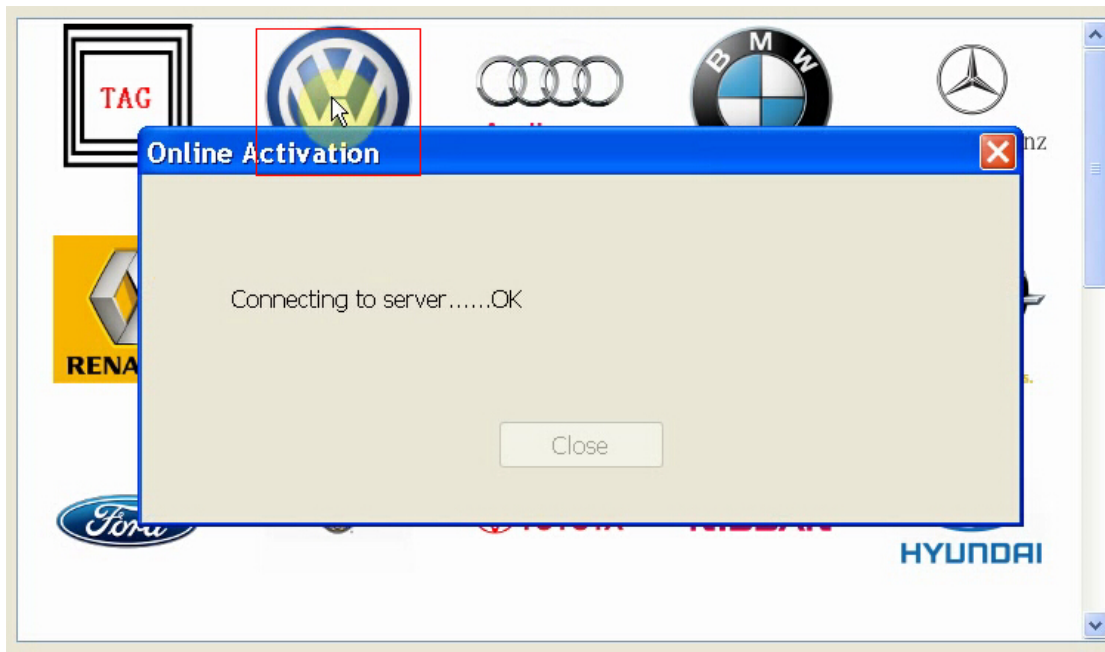


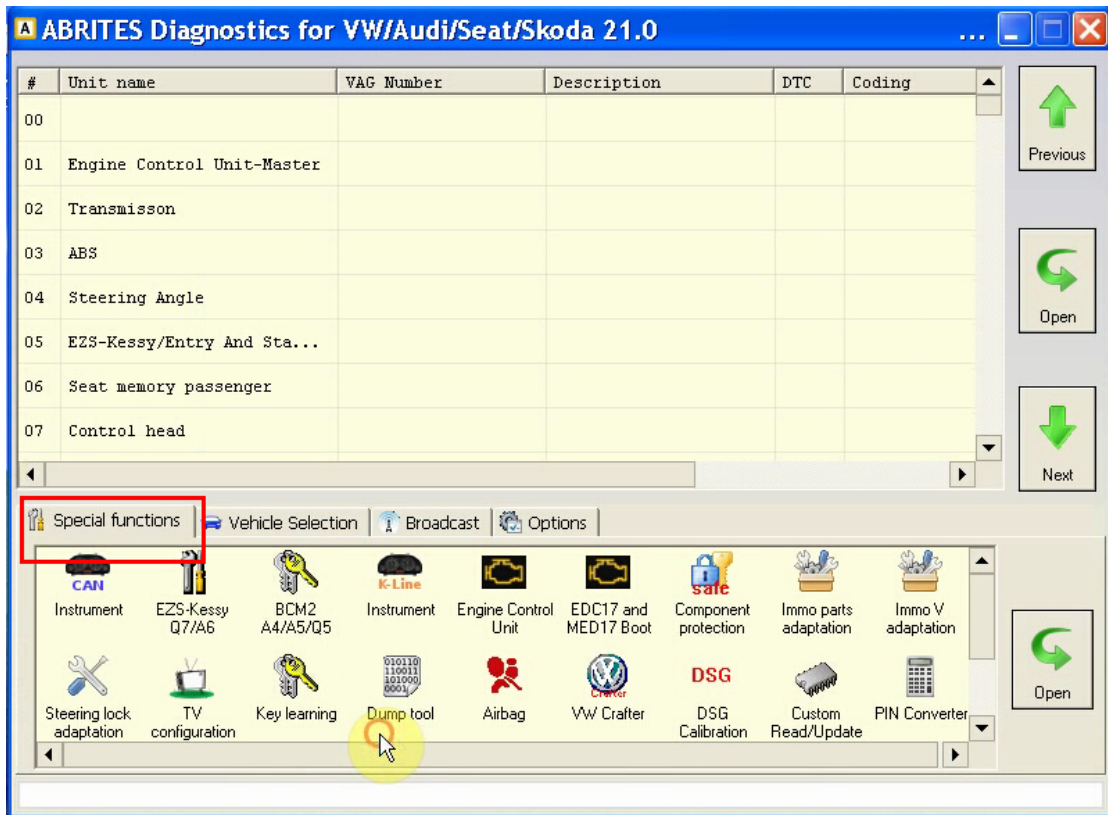
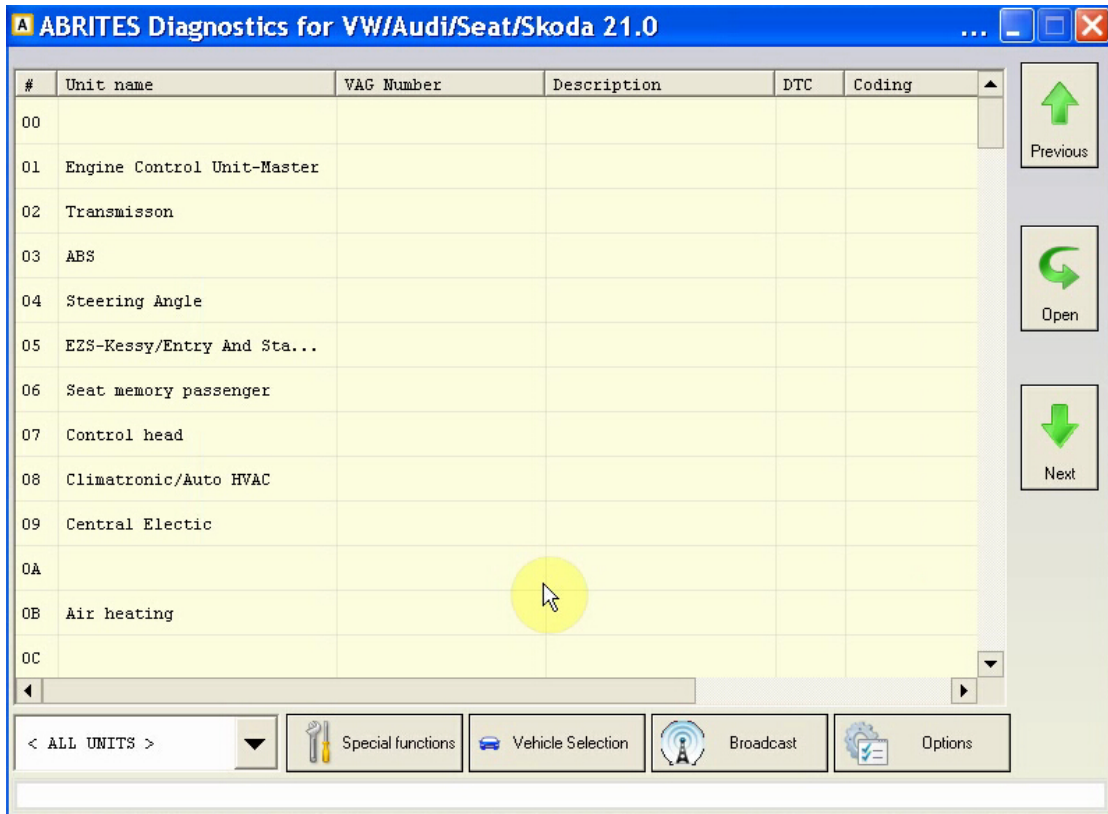


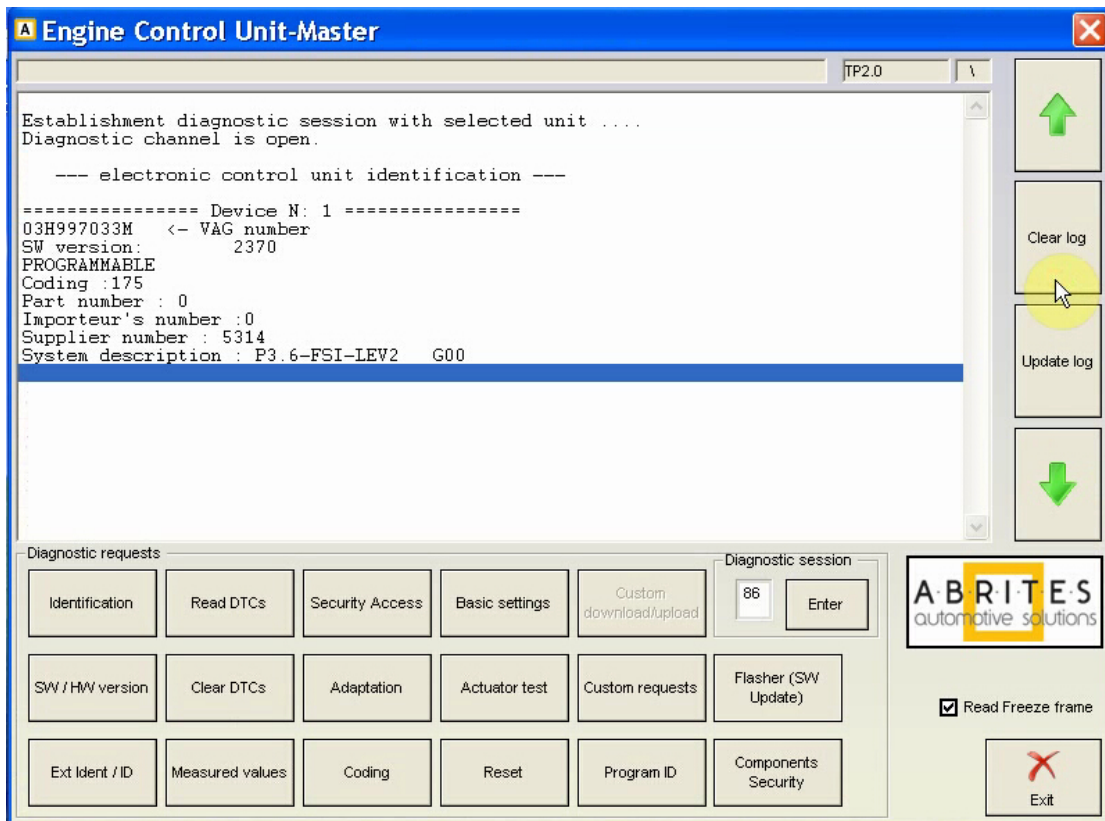
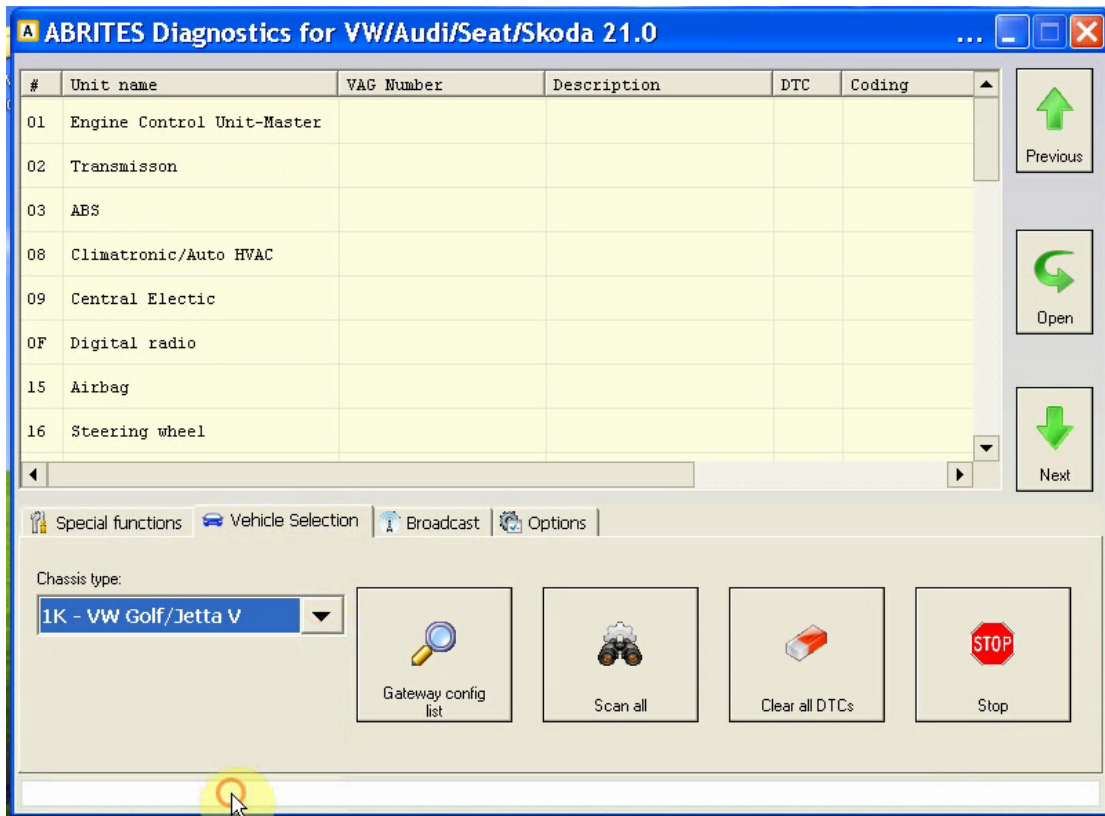


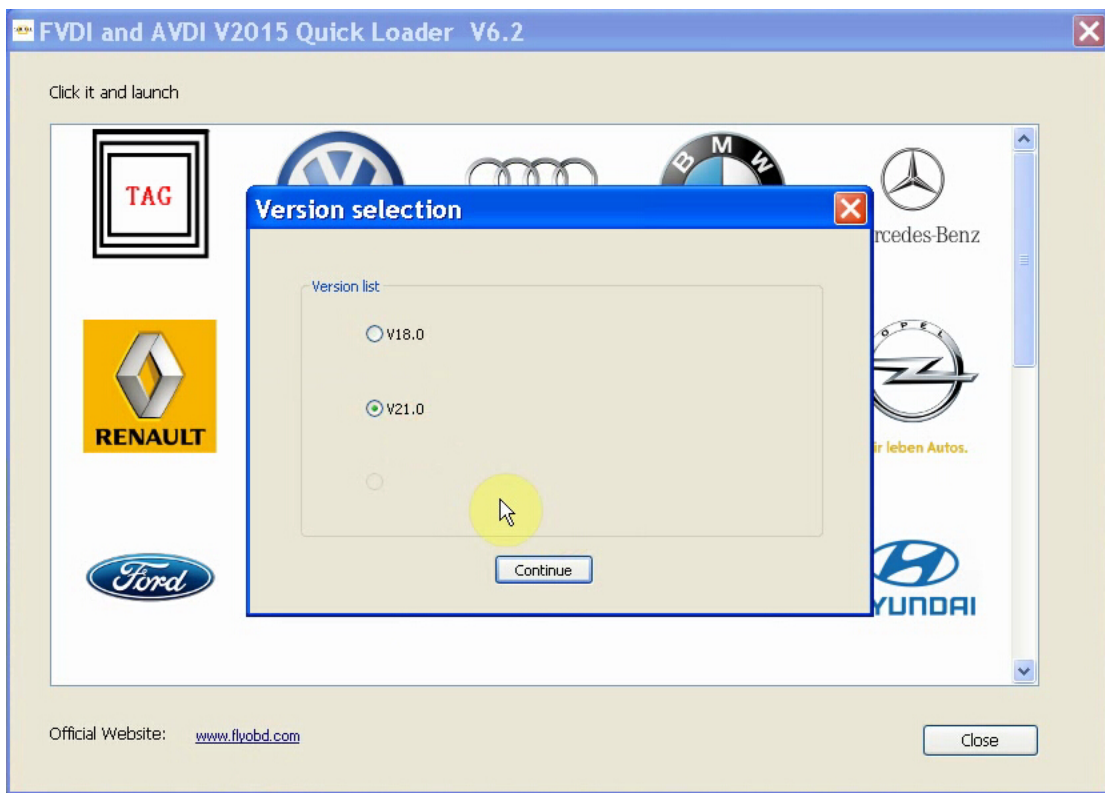
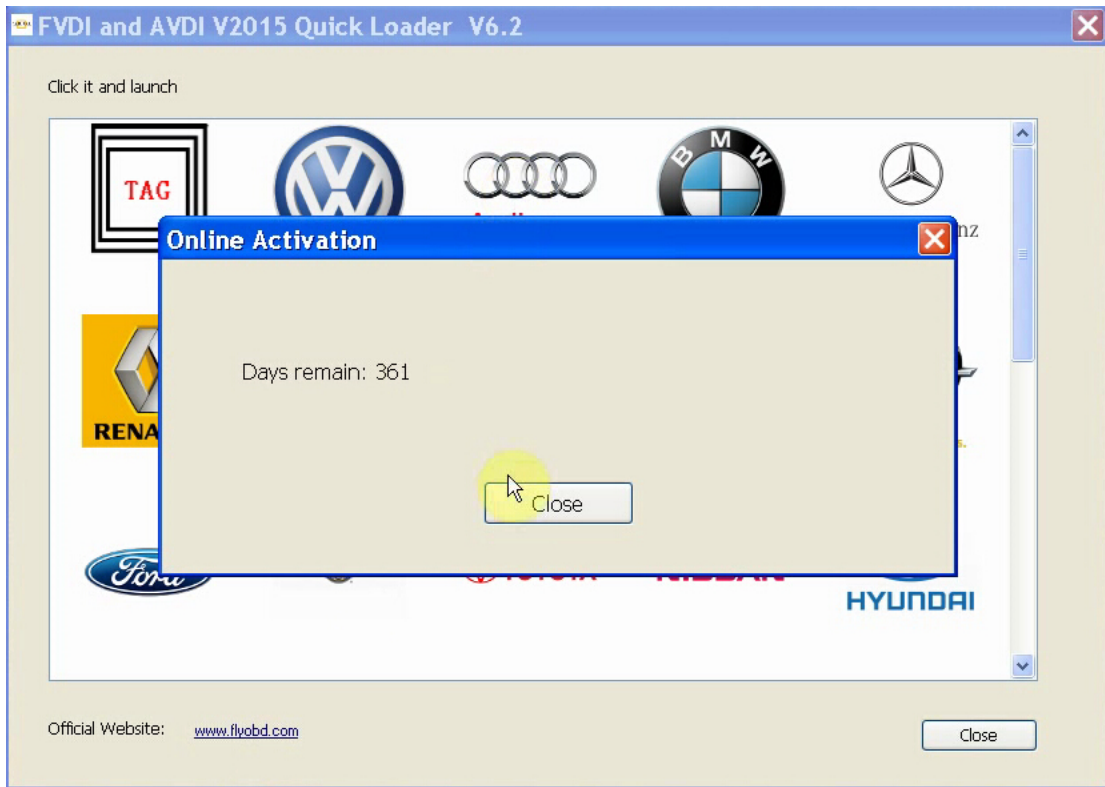


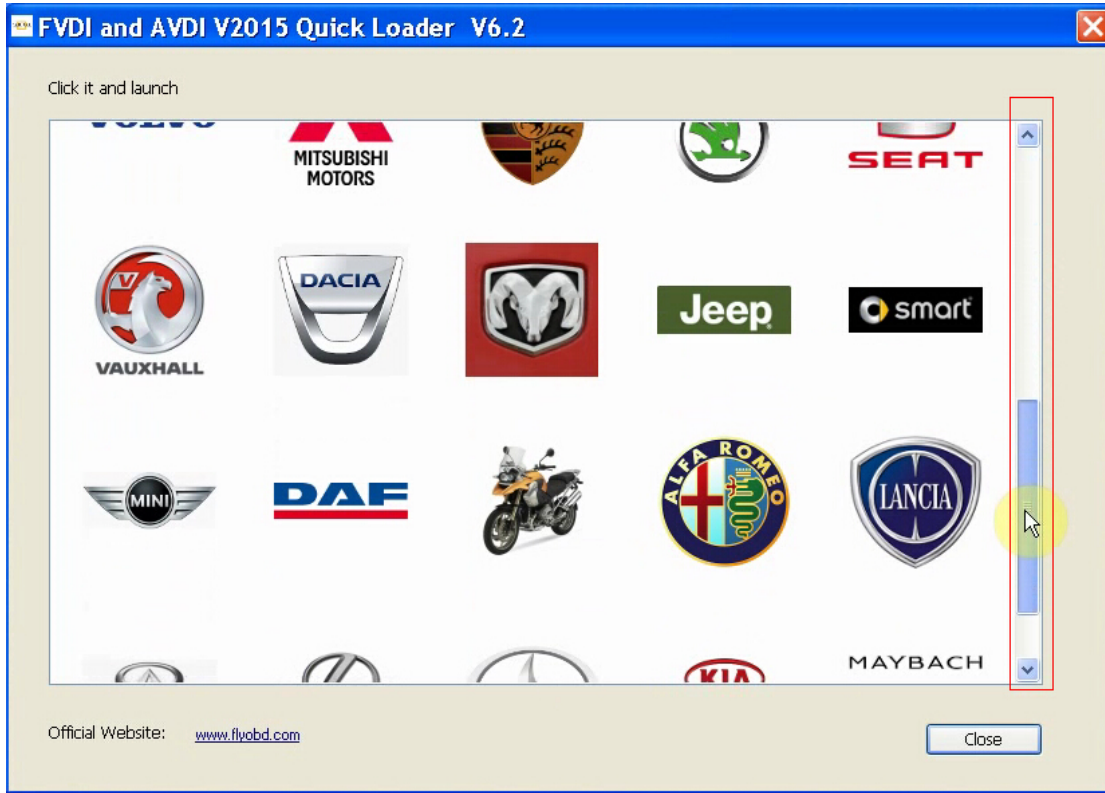
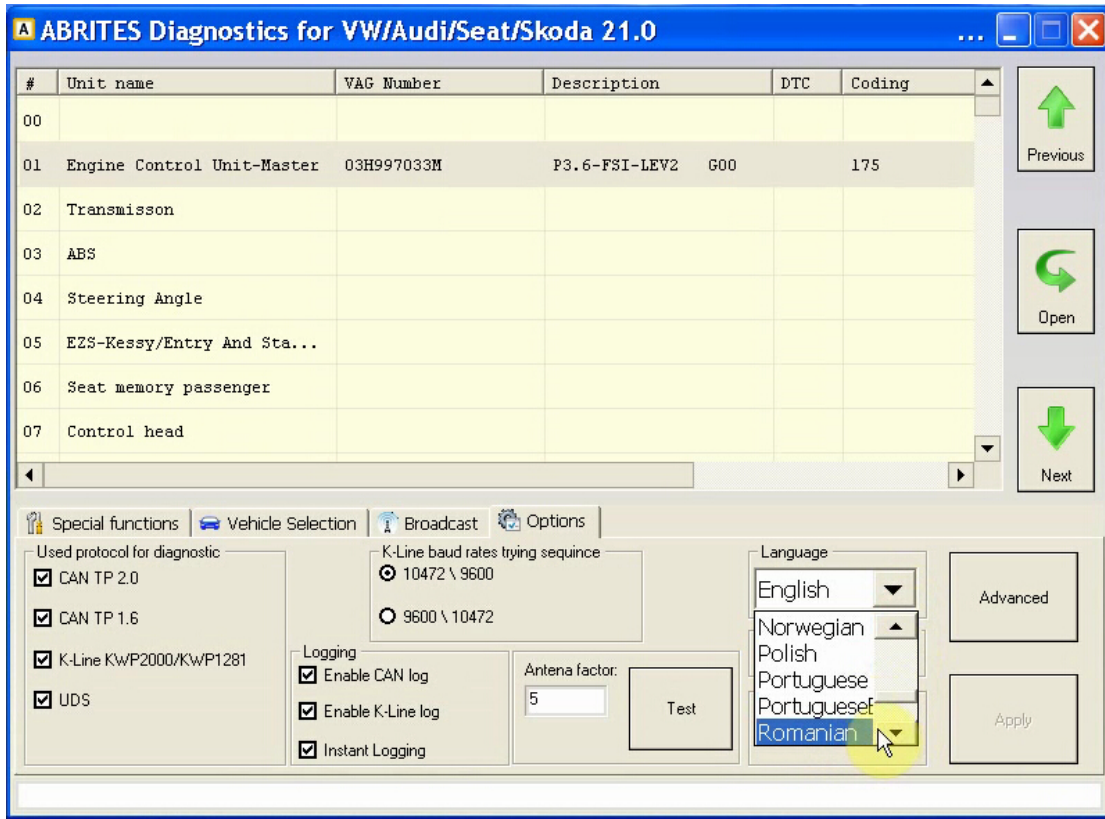












ABRITES Diagnostics for VW/Audi/Seat/Skoda 21.0

#	Unit name	VAG Number	Description	DTC	Coding
00					
01	Engine Control Unit-Master	03H997033M	P3.6-FSI-LEV2	G00	175
02	Transmisson				
03	ABS				
04	Steering Angle				
05	EZS-Kessy/Entry And Sta...				
06	Seat memory passenger				
07	Control head				

Special functions | Vehicle Selection | Broadcast | Options

Used protocol for diagnostic

- CAN TP 2.0
- CAN TP 1.6
- K-Line KWP2000/KWP1281
- UDS

K-Line baud rates trying sequince

- 10472 \ 9600
- 9600 \ 10472

Logging

- Enable CAN log
- Enable K-Line log
- Instant Logging

Antena factor: 5

Language

- English
- Romanian
- Russian
- Slovenian
- Spanish
- SpanishL

Test

Advanced

Apply

Previous

Open

Next